

## Supporting Information

*Rec. Nat. Prod.* 7:4 (2013) 307-311

### Flavonoids from Twigs of *Millettia leptobotrya*

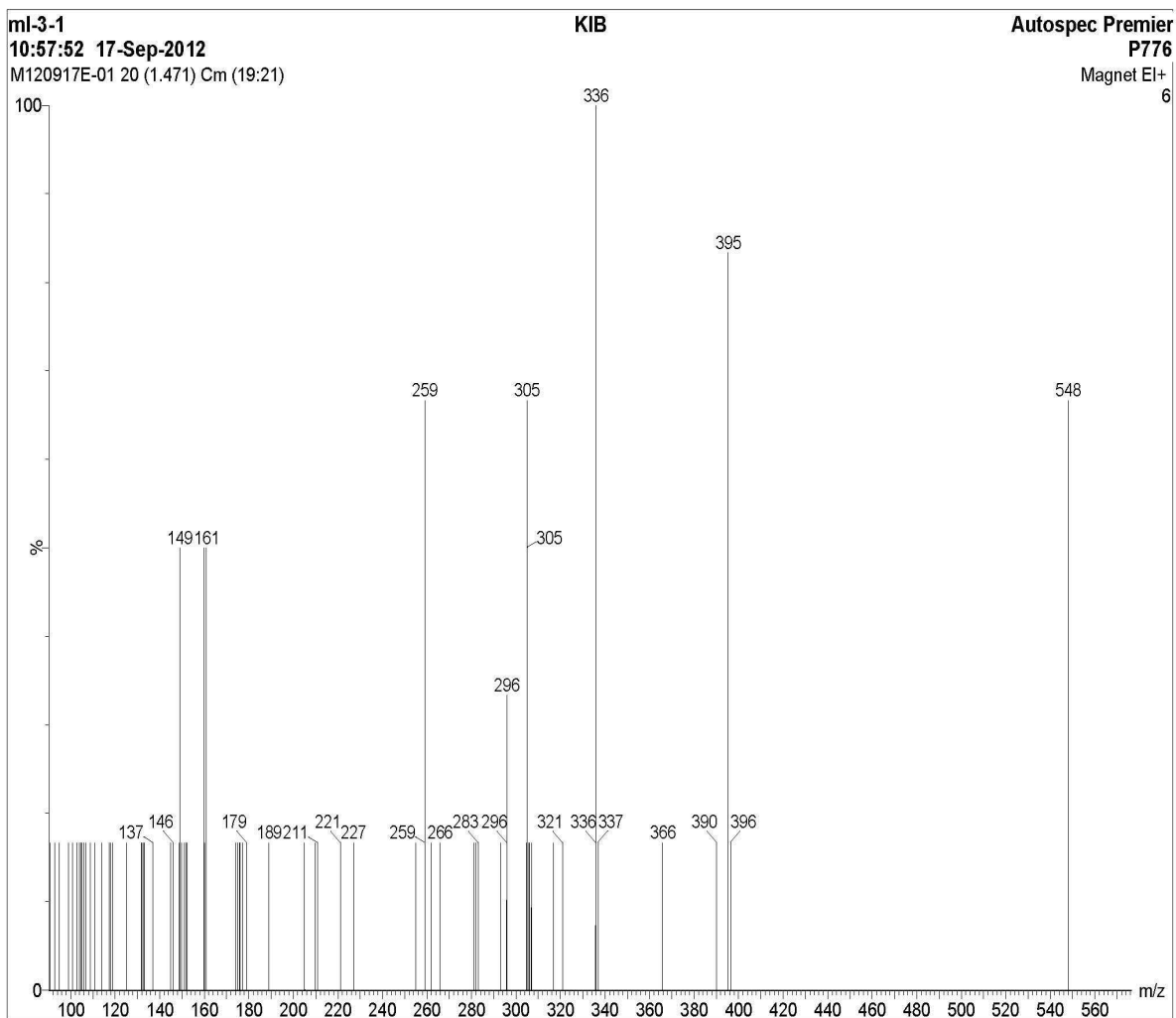
Zhi Na \*<sup>1</sup>, Qishi Song<sup>2</sup> and Huabin Hu<sup>1</sup>

<sup>1</sup> Key Laboratory of Tropical Forest Ecology, Xishuangbanna Tropical Botanical Garden, Chinese Academy of Sciences, Mengla, Yunnan, 666303, P. R. China

<sup>2</sup> Laboratory of Tropical Plant Resource Science, Xishuangbanna Tropical Botanical Garden, Chinese Academy of Sciences, Mengla, Yunnan, 666303, P. R. China

Table of Contents	Page
<b>S1:</b> EI-MS Spectrum of Compound 1	3
<b>S2:</b> HREI-MS Spectrum of Compound 1	4
<b>S3:</b> <sup>1</sup> H-NMR (400 MHz, CDCl <sub>3</sub> ) Spectrum of Compound 1	5
<b>S4:</b> <sup>13</sup> C-NMR + DEPT (100 MHz) Spectrum of Compound 1	6
<b>S5:</b> COSY (500 MHz) Spectrum of Compound 1	7
<b>S6:</b> HSQC (500 MHz) Spectrum of Compound 1	8
<b>S7:</b> HMBC Spectrum of Compound 1	9
<b>S8:</b> EI-MS Spectrum of Compound 2	10
<b>S9:</b> HREI-MS Spectrum of Compound 2	11
<b>S10:</b> <sup>1</sup> H-NMR (400 MHz, Me <sub>2</sub> CO- <i>d</i> <sub>6</sub> ) Spectrum of Compound 2	12
<b>S11:</b> <sup>13</sup> C-NMR + DEPT (100 MHz) Spectrum of Compound 2	13
<b>S12:</b> COSY (500 MHz) Spectrum of Compound 2	14

<b>S13:</b> HSQC (500 MHz) Spectrum of Compound <b>2</b>	15
<b>S14:</b> HMBC Spectrum of Compound <b>2</b>	16



**S1: EI-MS Spectrum of Compound 1**

Single Mass Analysis

Tolerance = 10.0 PPM / DBE: min = -10.0, max = 120.0

Selected filters: None

Monoisotopic Mass, Odd and Even Electron Ions

21 formula(e) evaluated with 1 results within limits (up to 51 closest results for each mass)

Elements Used:

C: 0-200 H: 0-400 O: 3-6

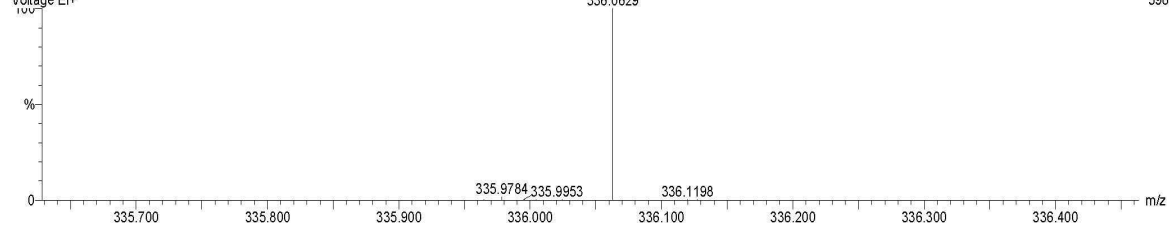
m1-3-1

11:10:05 17-Sep-2012

Voltage EI+

KIB  
M120917EA-03AFAMM 8 (0.734)  
336.0629

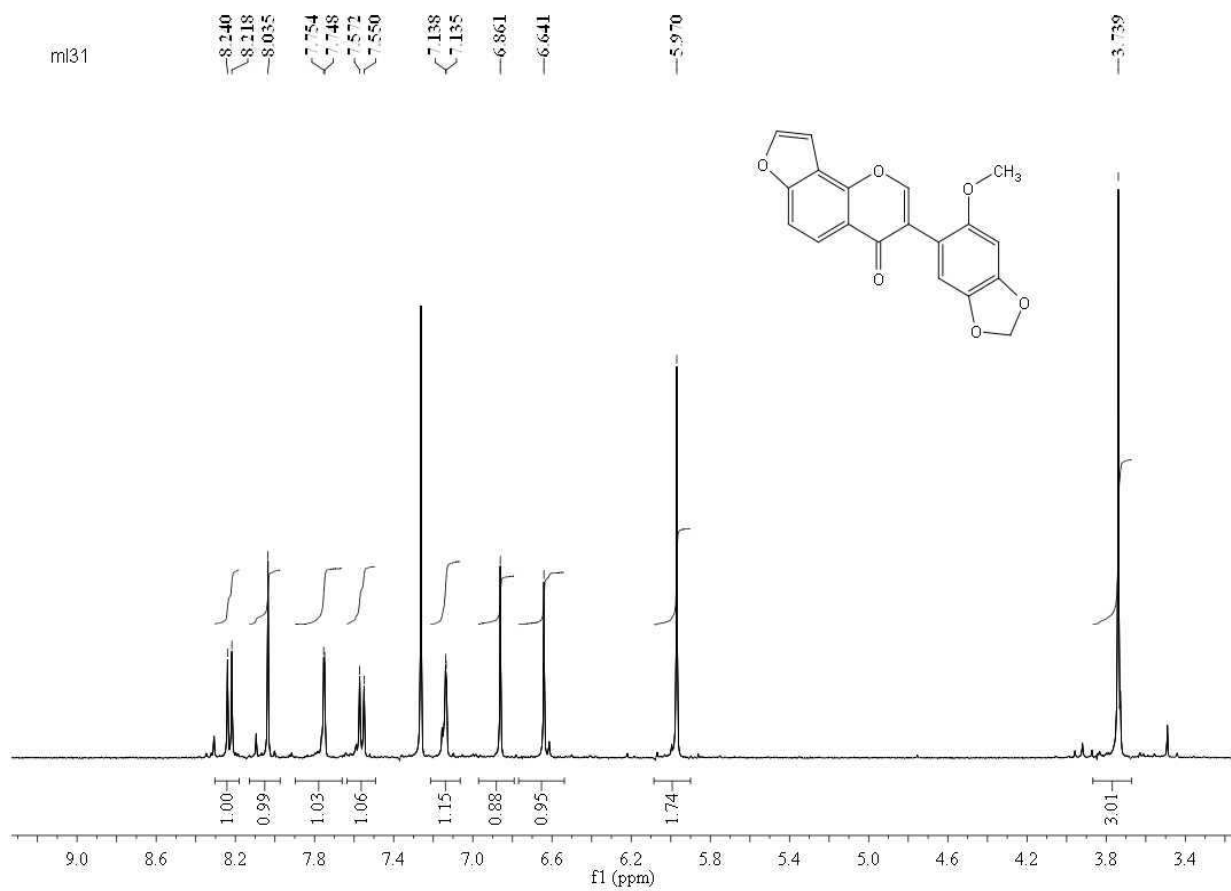
Autospec Premier  
P776  
598



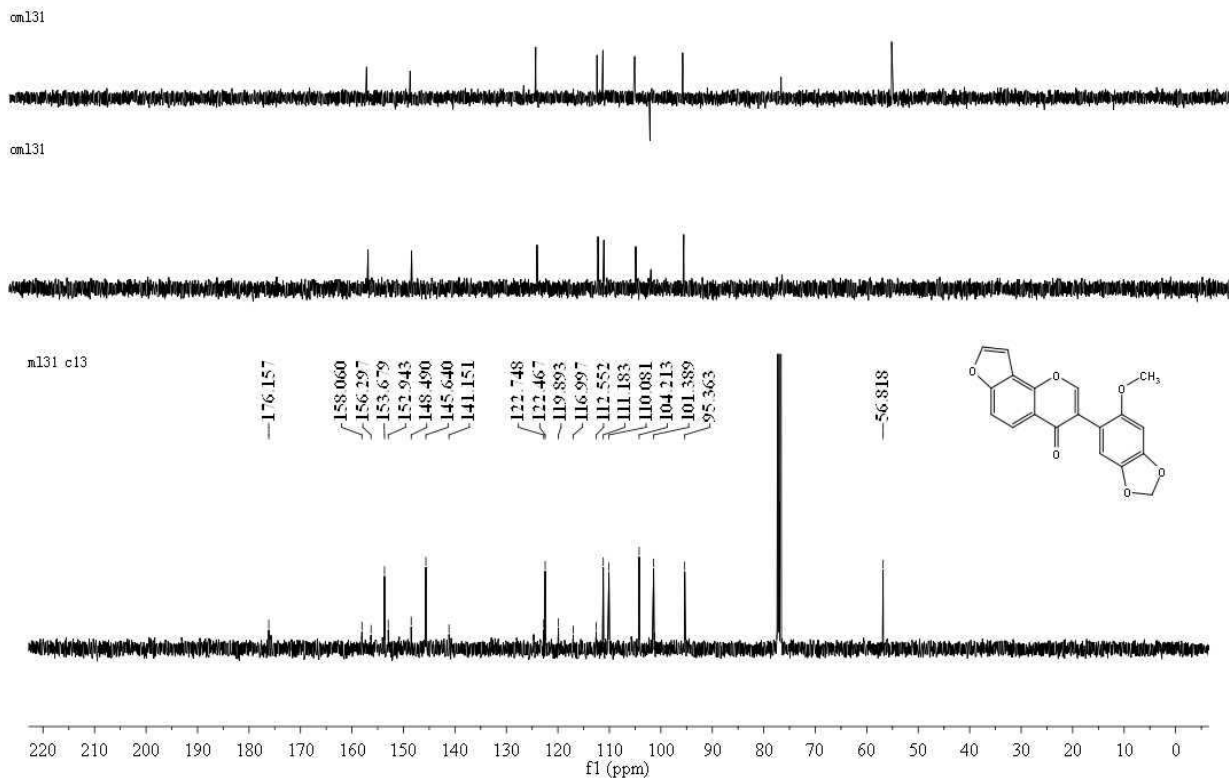
Minimum: -10.0  
Maximum: 100.0 10.0 120.0

Mass	Calc. Mass	mDa	PPM	DBE	i-FIT	Formula
336.0629	336.0634	-0.5	-1.5	14.0	5546309.0	C19 H12 O6

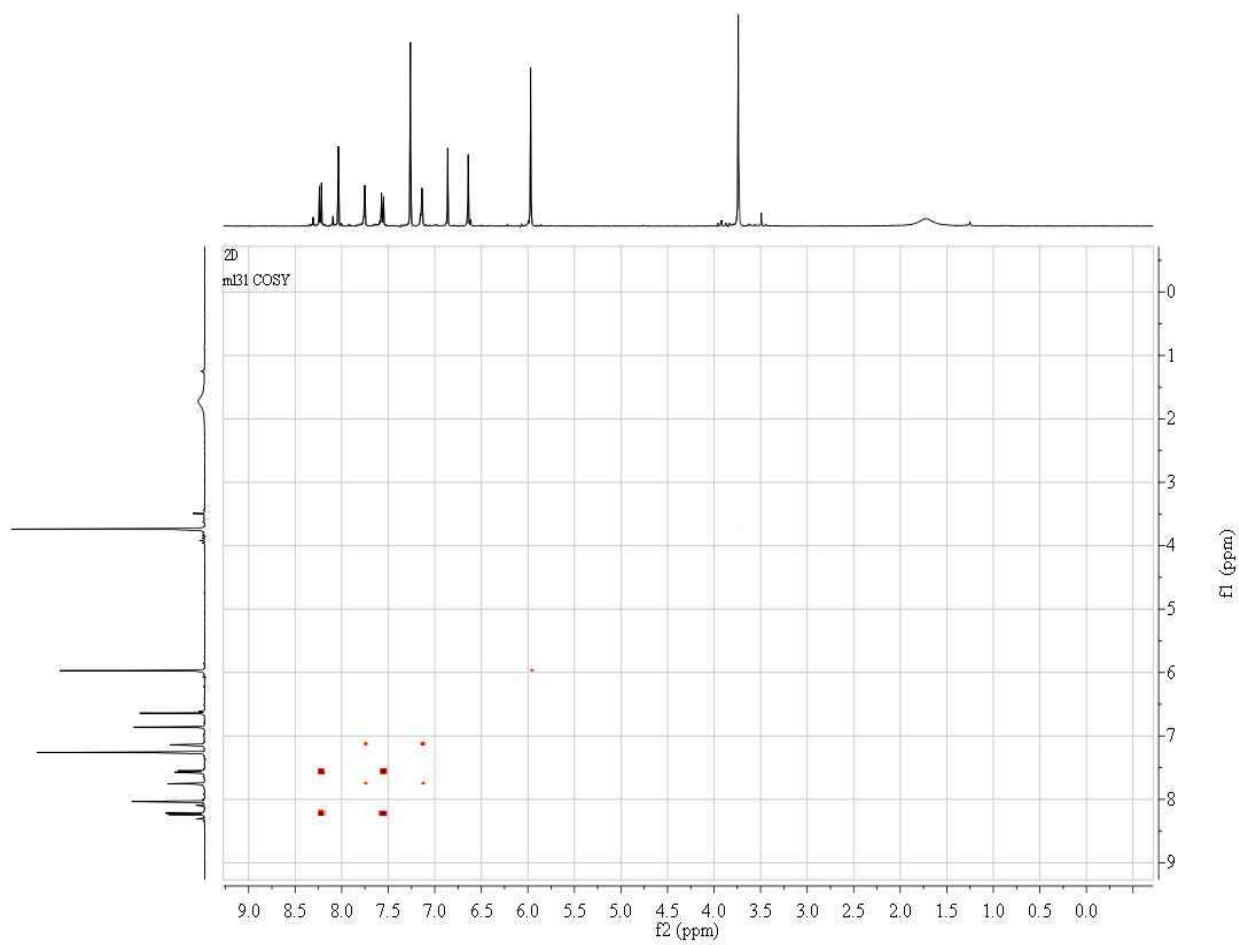
S2: HREI-MS Spectrum of Compound 1



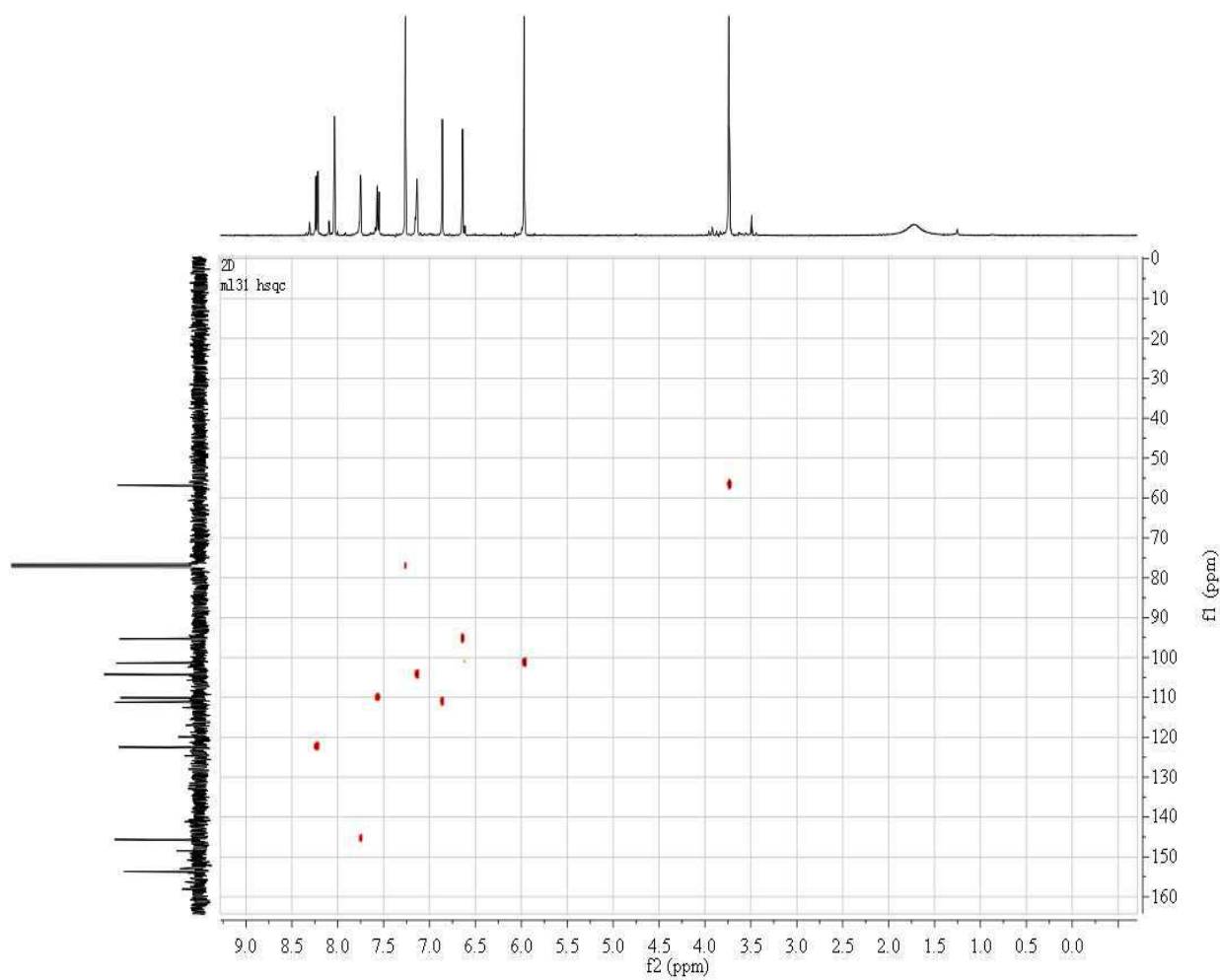
**S3:**  $^1\text{H-NMR}$  (400 MHz,  $\text{CDCl}_3$ ) Spectrum of Compound **1**



**S4:**  $^{13}\text{C}$ -NMR + DEPT Spectrum of Compound **1**

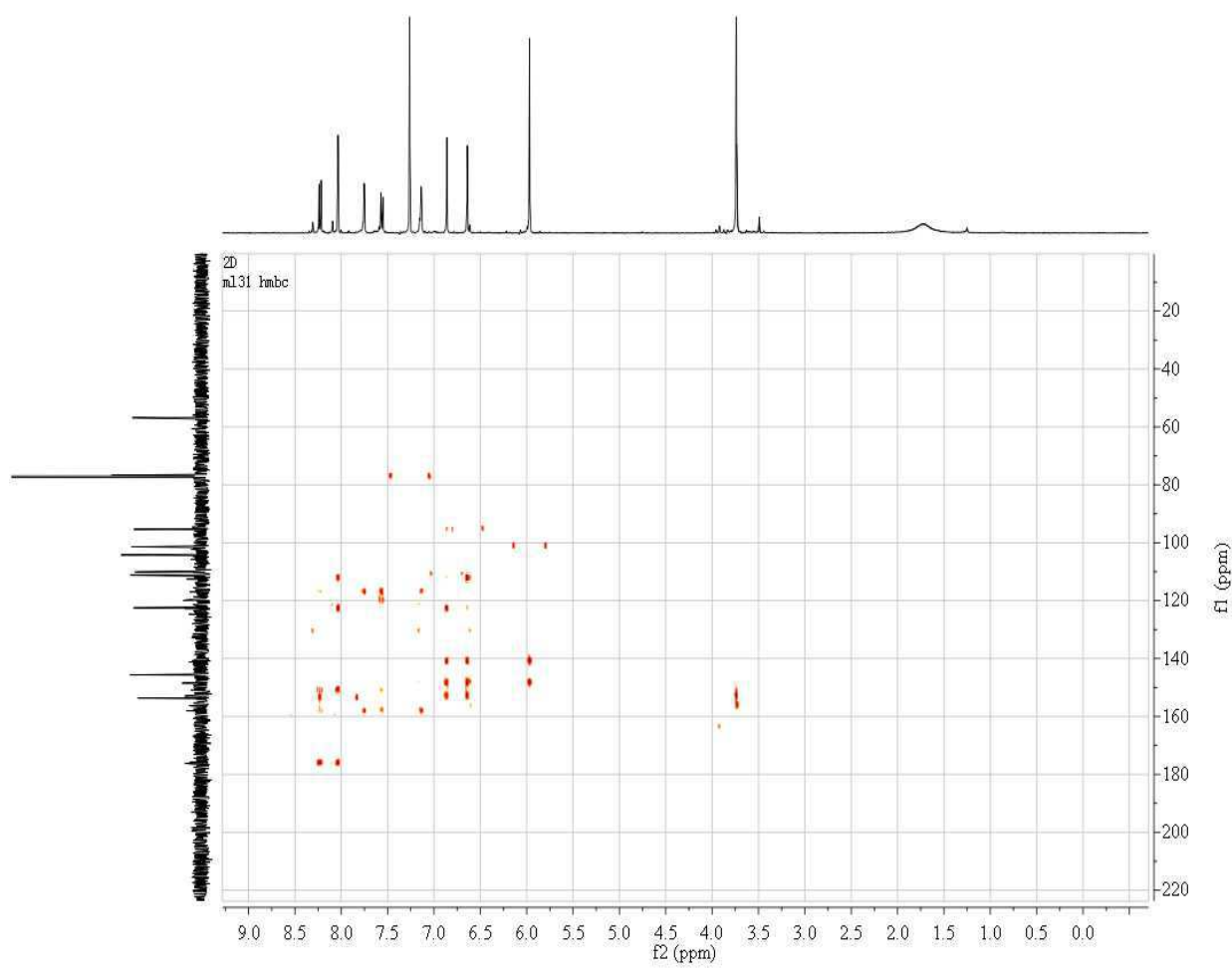


**S5: COSY (500 MHz) Spectrum of Compound 1**

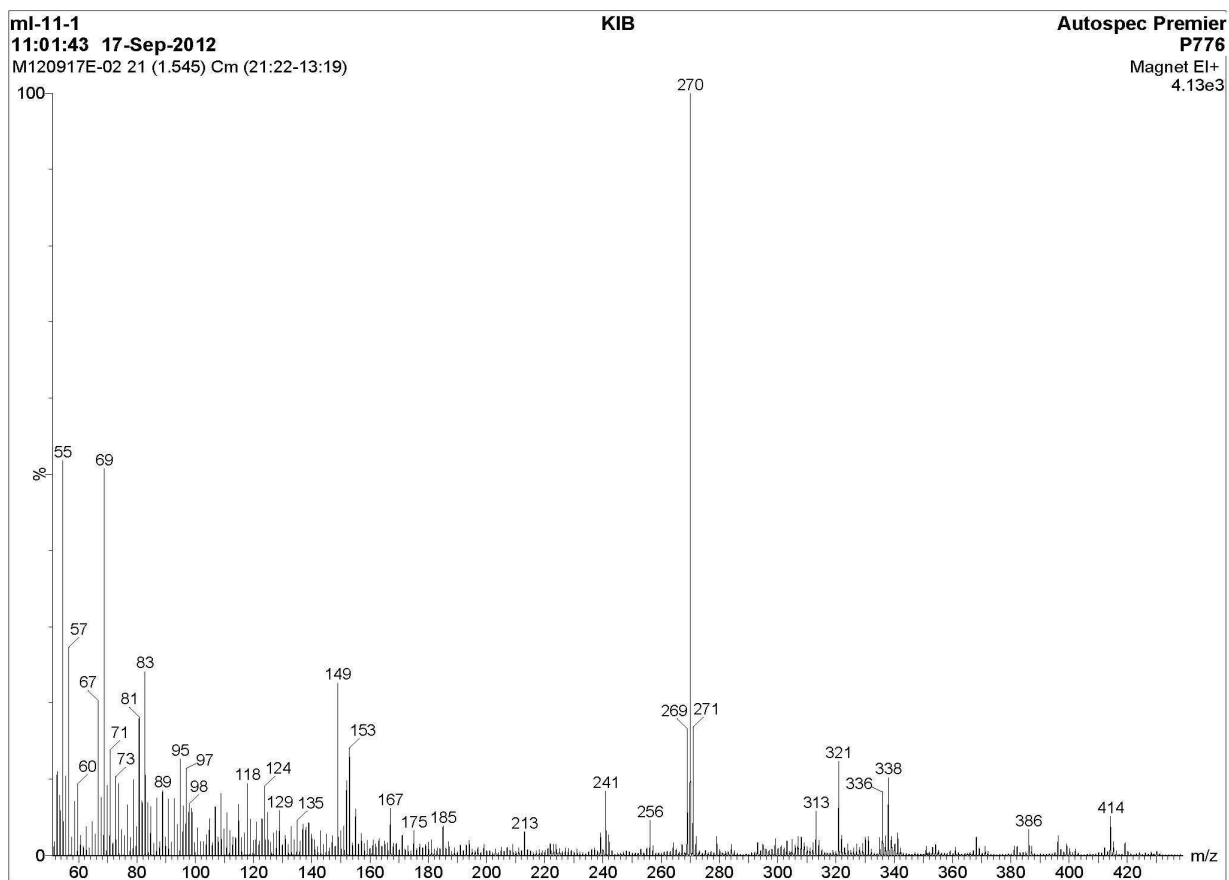


**S6: HSQC (500 MHz) Spectrum of Compound 1**





**S7: HMBC (500 MHz) Spectrum of Compound 1**



**S8:** EI-MS Spectrum of Compound 2

Elemental Composition Report

Single Mass Analysis

Tolerance = 10.0 PPM / DBE: min = -10.0, max = 120.0

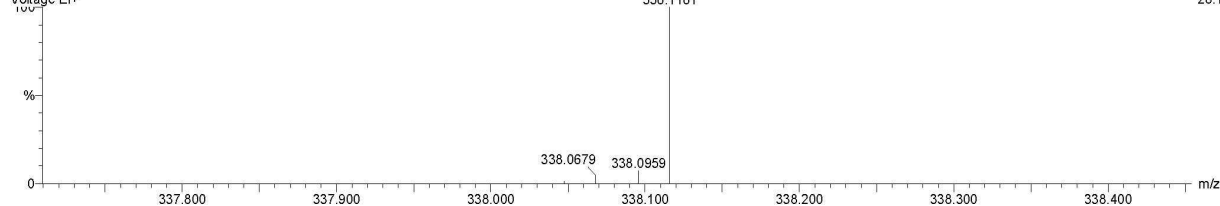
Selected filters: None

Monoisotopic Mass, Odd and Even Electron Ions  
22 formula(e) evaluated with 1 results within limits (up to 51 closest results for each mass)

Elements Used:  
C: 0-200 H: 0-400 O: 2-5

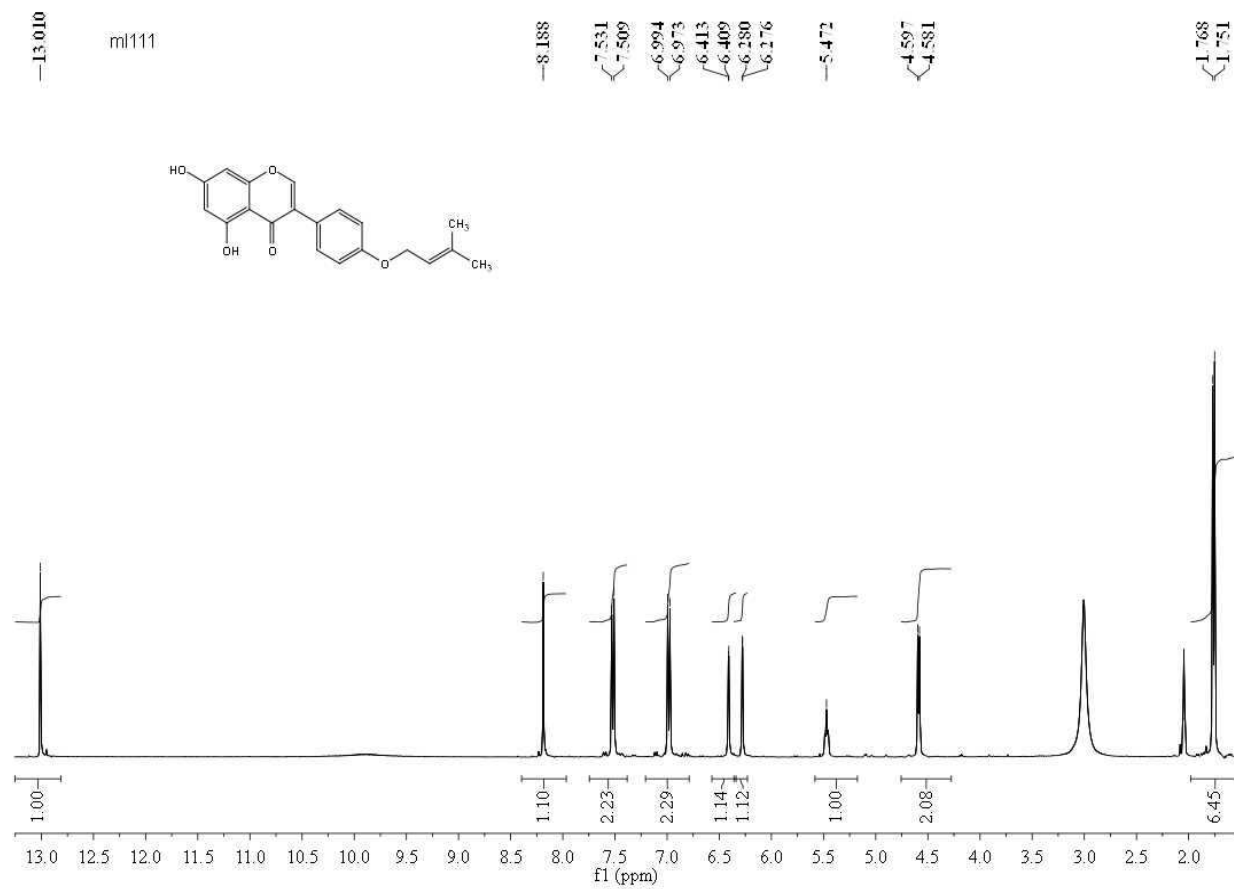
ml-11-1  
11:05:28 17-Sep-2012

Voltage EI+

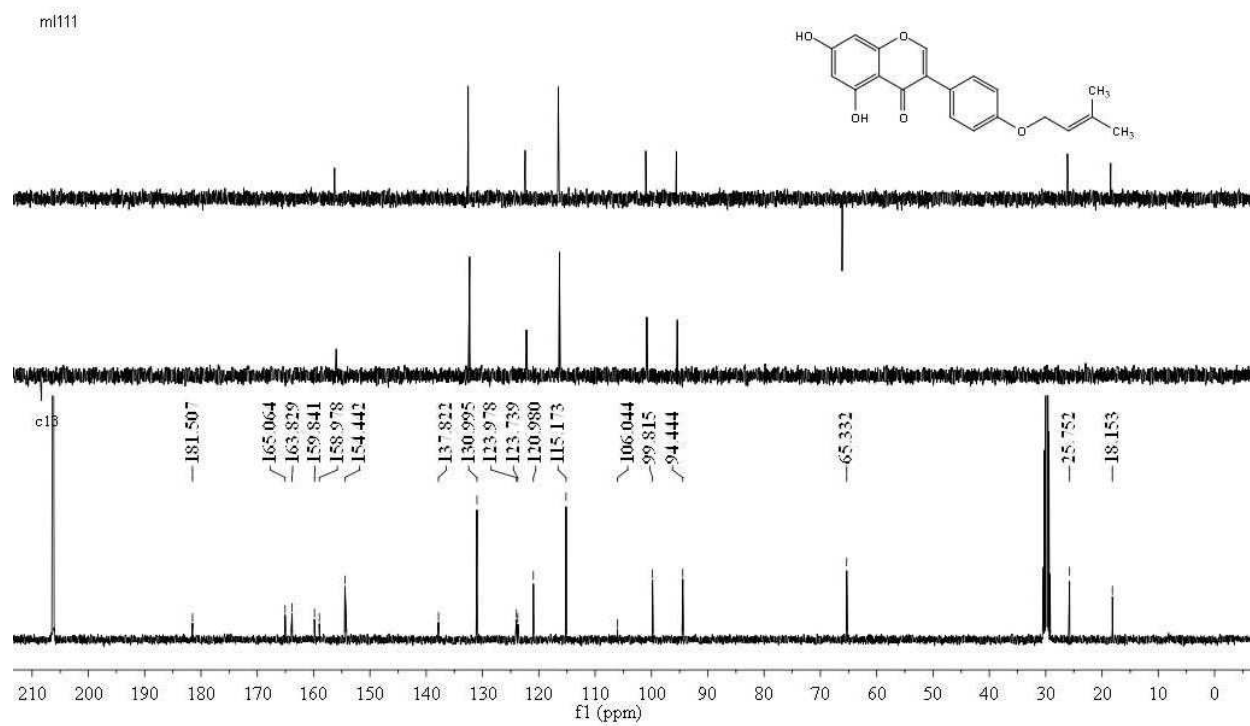


Minimum:						
Maximum:	100.0	10.0	-10.0	120.0		
Mass	Calc. Mass	mDa	PPM	DBE	i-FIT	Formula
338.1161	338.1154	0.7	2.1	12.0	5546031.0	C20 H18 O5

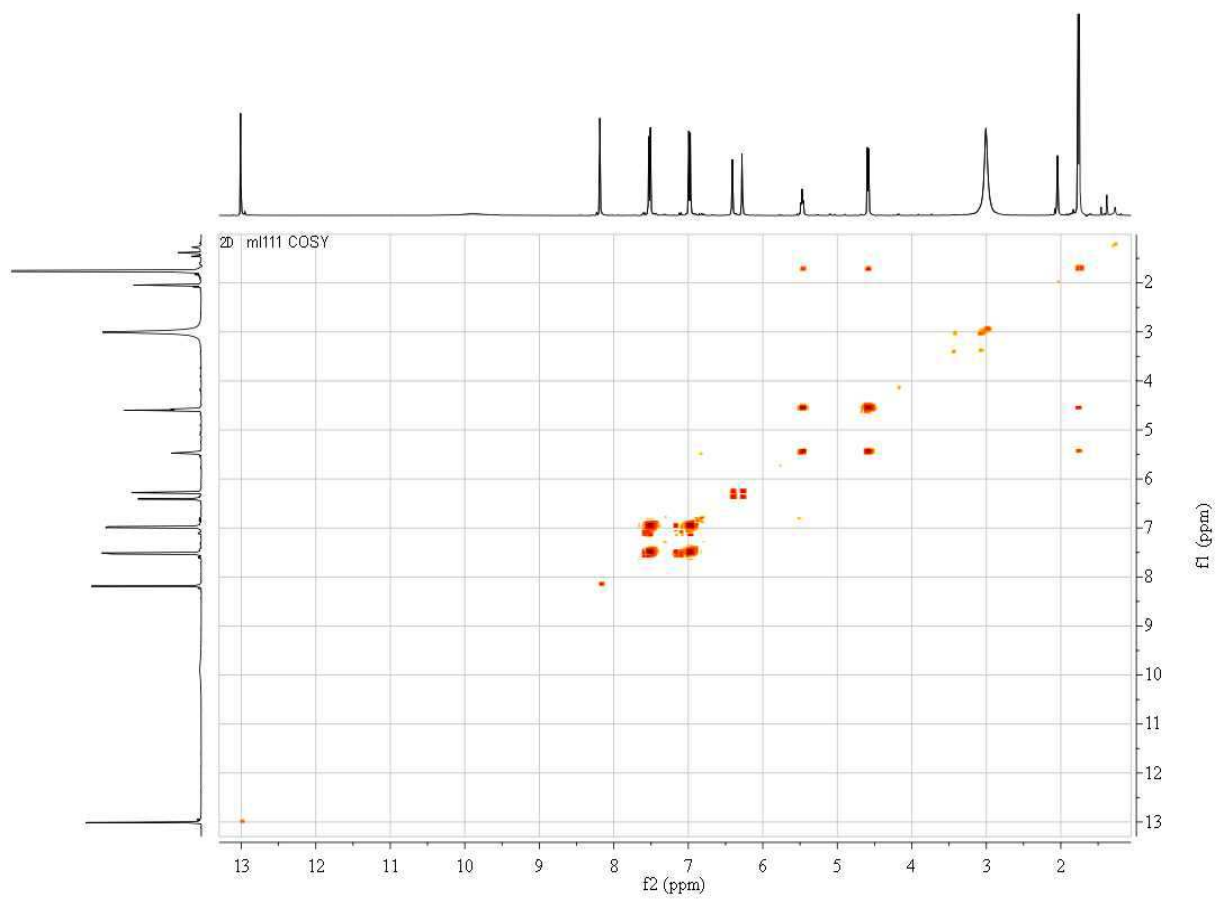
S9: HREI-MS Spectrum of Compound 2



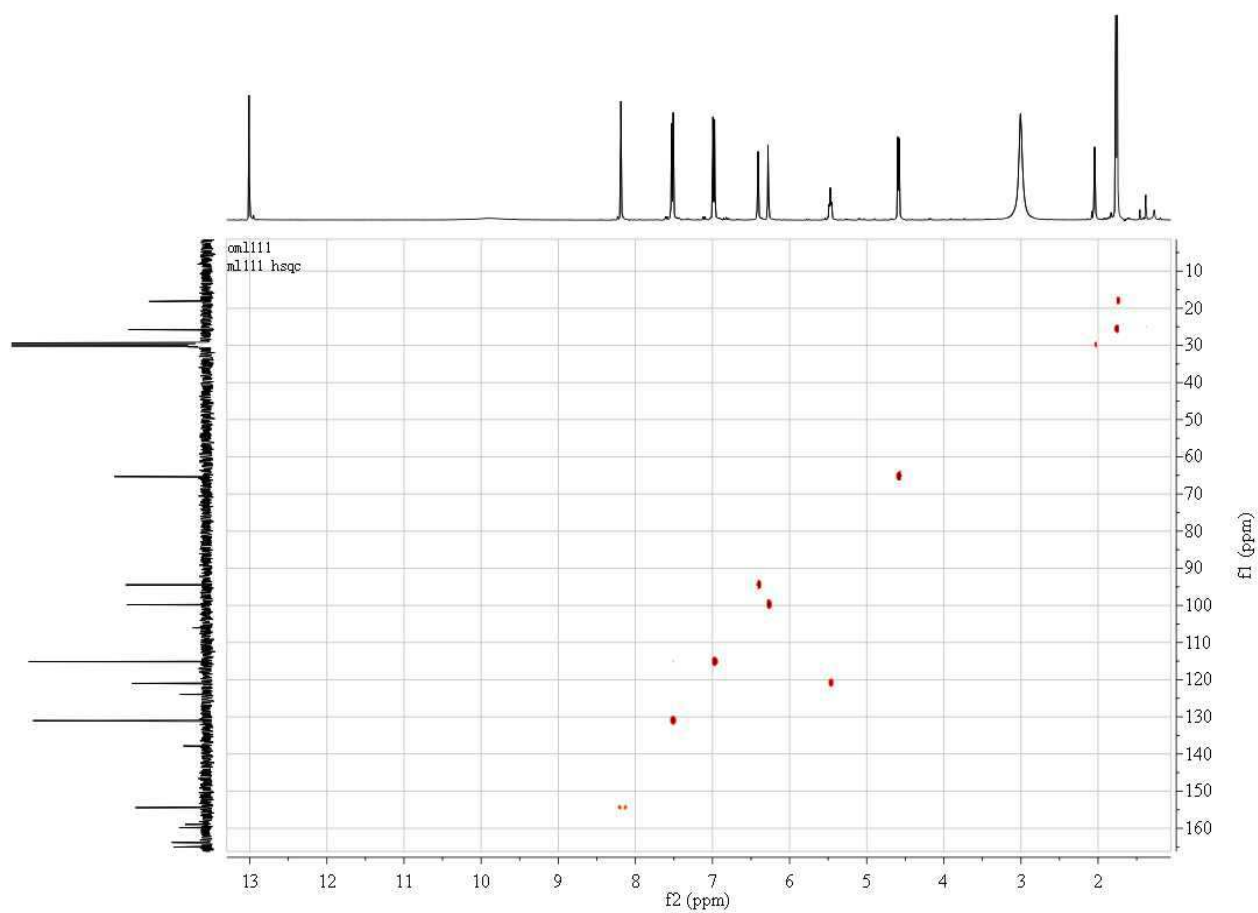
**S10:**  $^1\text{H-NMR}$  (400 MHz,  $\text{Me}_2\text{CO-}d_6$ ) Spectrum of Compound 2



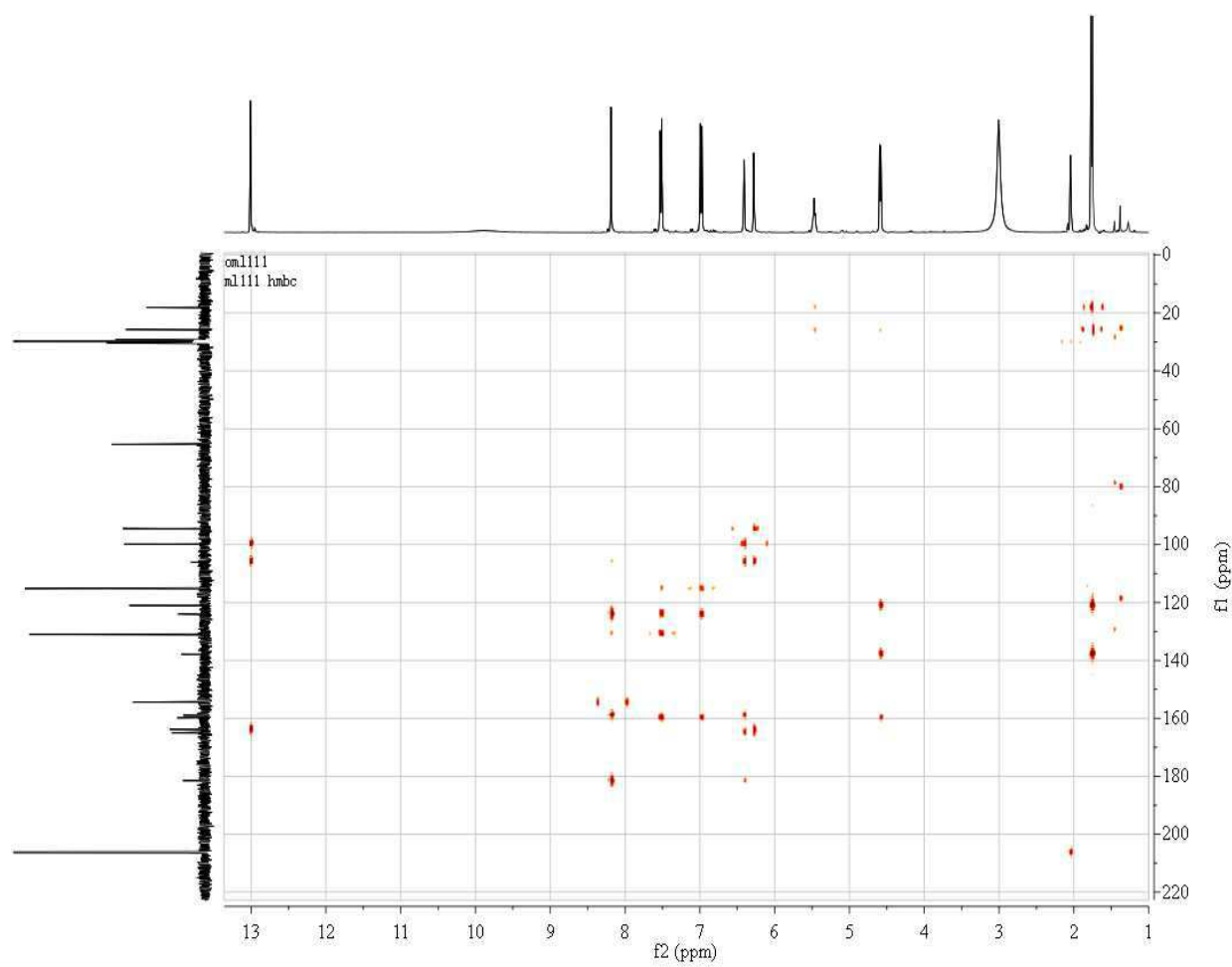
**S11:**  $^{13}\text{C-NMR}$  + DEPT (100 MHz,  $\text{Me}_2\text{CO-}d_6$ ) Spectrum of Compound 2



**S12:** COSY (500 MHz) Spectrum of Compound **2**



**S13:** HSQC (500 MHz) Spectrum of Compound **2**



**S14:** HMBC (500 MHz) Spectrum of Compound **2**