

Supporting Information

Rec. Nat. Prod. 10:2 (2016) 228-239

Essential Oil Contents and Micromorphological Traits of *Stachys iva* Griseb. and *S. horvaticii* Micevski (Lamiaceae)

Dario Kremer¹, Vlado Matevski², Valerija Dunkić³¹,

Nada Bezić³ and Edith Stabentheiner⁴

¹ Faculty of Pharmacy and Biochemistry, University of Zagreb, A. Kovačića 1, HR-10000 Zagreb, Croatia

² Faculty of Natural Sciences and Mathematics, Ss Cyril and Methodius University, 1000 Skopje, Republic of Macedonia

³ Faculty of Science, University of Split, Teslina 12, HR-21000 Split, Croatia

⁴ Institute of Plant Sciences, Karl-Franzens University, Schubertstrasse 51, A-8010 Graz, Austria

Table of Contents	Page
S1: GC/MS chromatogram of chemical components (%) of essential oil of <i>Stachys iva</i> and from two <i>S. horvaticii</i>	2
S2: Figure 1. SEM micrographs of the different types of trichomes of <i>Stachys iva</i> and <i>S. horvaticii</i>	3

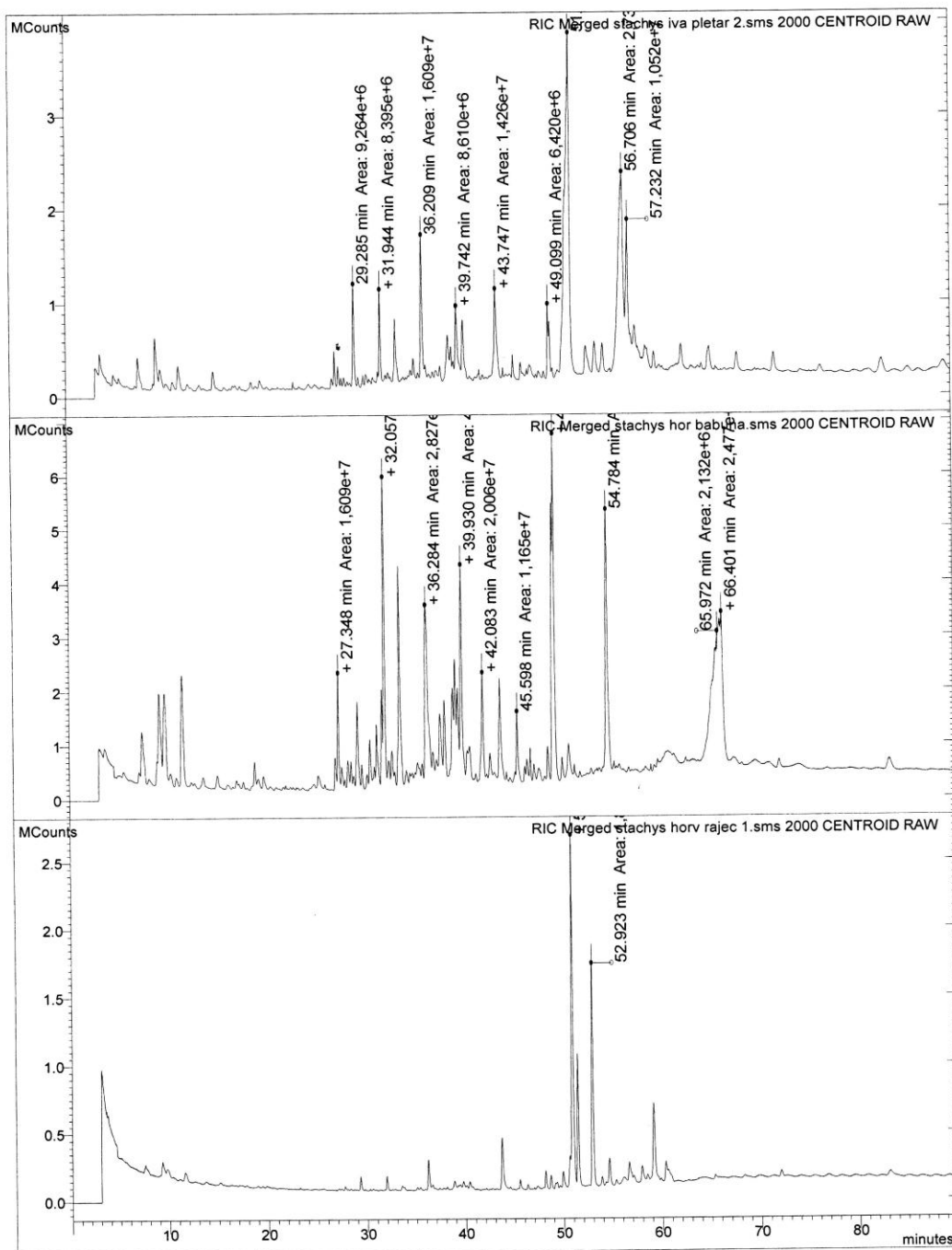
¹ Corresponding author: E-Mail: dunkic@pmfst.hr

Chromatogram Plots

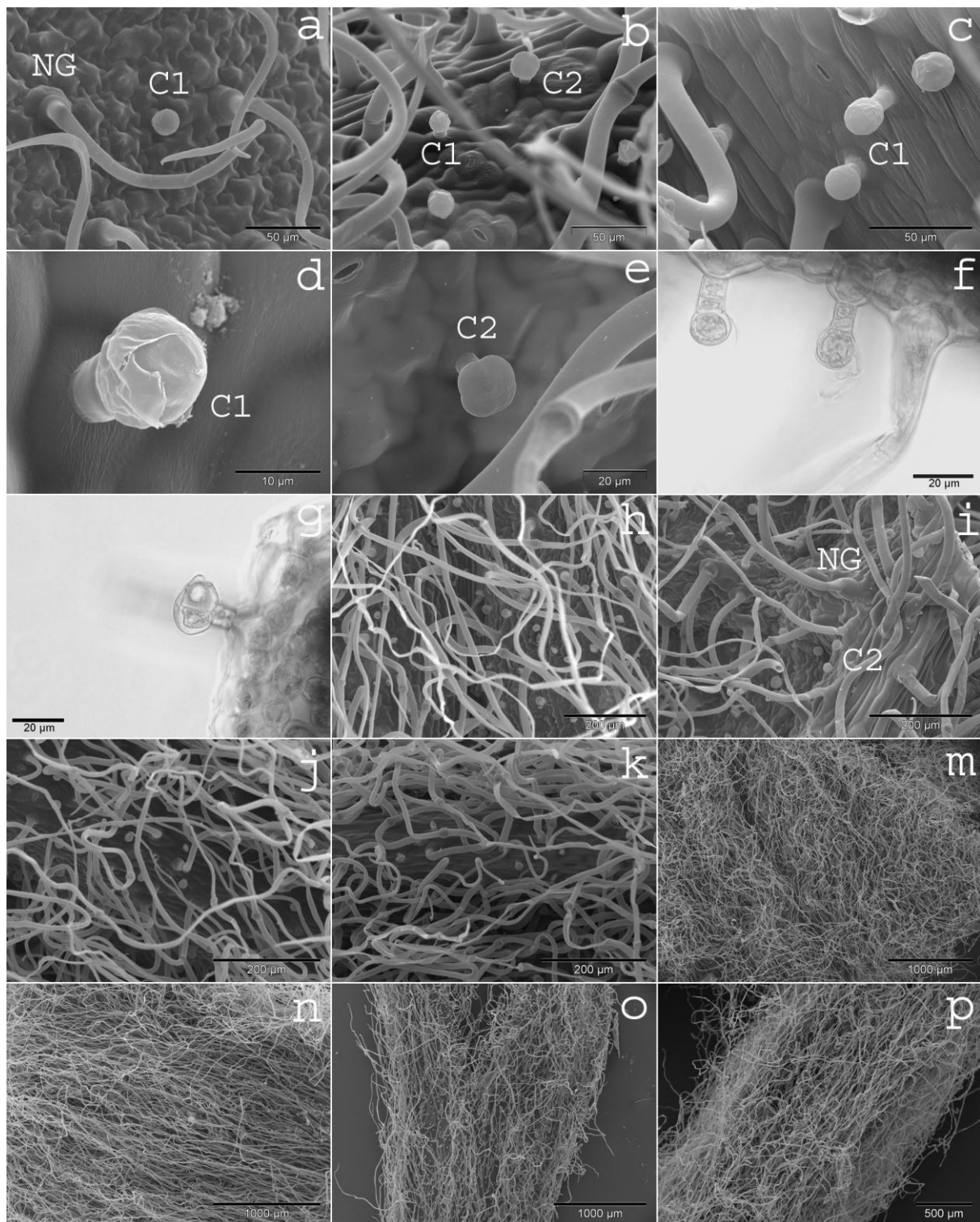
Plot 1: ...ata\valerija\stachys\stachys iva pletar 2.sms RIC Merged

Plot 2: ...data\valerija\stachys\stachys hor babuna.sms RIC Merged

Plot 3: ...ata\valerija\stachys\stachys horv rajec 1.sms RIC Merged



S1: GC/MS Spectrum of chemical components (%) of essential oil of *Stachys iva*, *S. horvaticii* from River Gorge (BR) and *S. horvaticii* from Rajec River Gorge (RR)



S2: Figure 1. SEM micrographs of the different types of trichomes of *Stachys iva* (b, c, d, e, h, i, o) and *S. horvaticii* (a, f, g, j, k, m, n, p) Non-glandular trichomes (NG), type 1 capitate trichomes (C1) and type 2 capitate trichomes (C2), and their distribution on the adaxial (h, m) and abaxial (i, n) leaf surface, on the outer side of calyx (a, b, d, e, j, o), and on the stem (c, k, p). LM micrographs (f, g) of C1 trichomes with one and two stem cells on the leaf of *S. iva* (f), and C2 trichomes on the calyx of *S. horvaticii* (g).