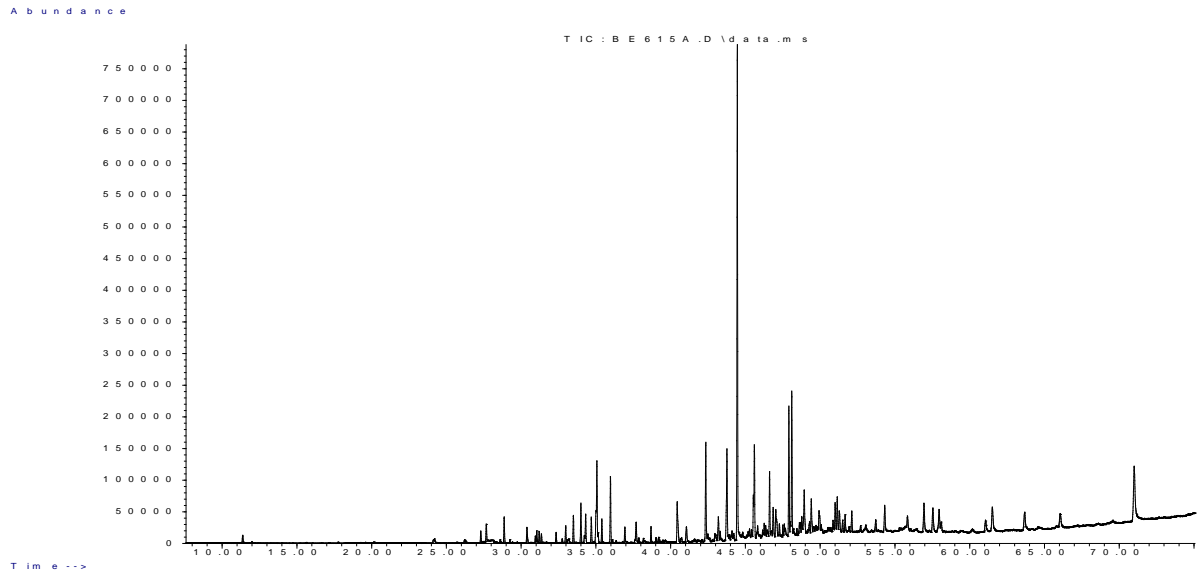
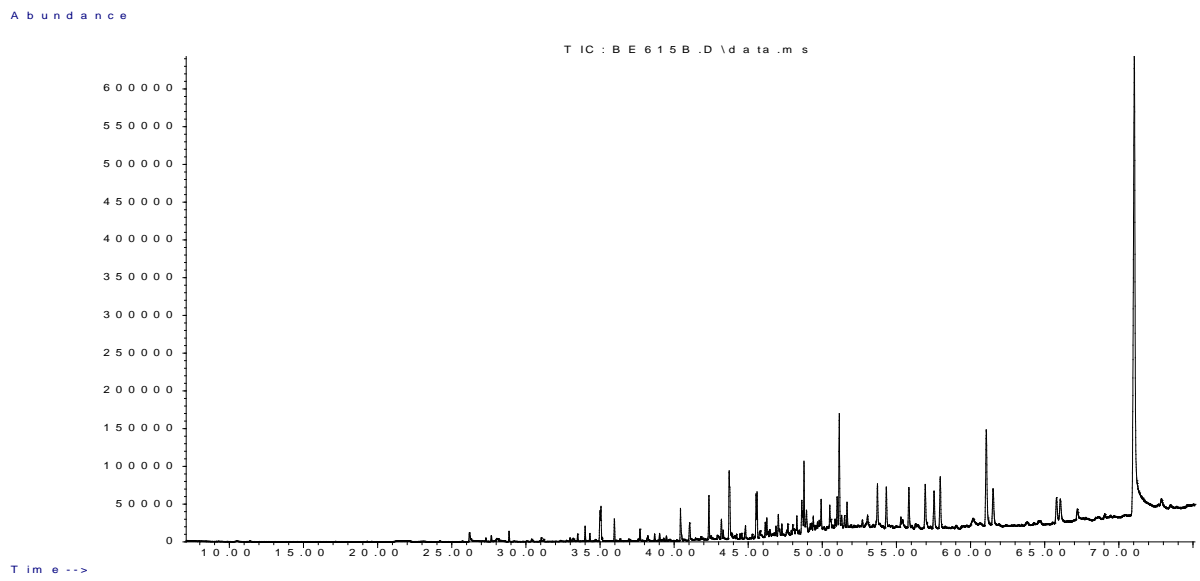


**Supporting Information*****Rec. Nat. Prod.* 11:4 (2017) 389-394****Essential Oil Composition and Antimicrobial Activity  
of *Aster subulatus* Michx. from Turkey****Fatma Ayaz<sup>1</sup>, Nurgün Küçükboyacı<sup>1\*</sup> and Betül Demirci<sup>2</sup>**<sup>1</sup>*Department of Pharmacognosy, Faculty of Pharmacy, Gazi University, 06330  
Ankara, Türkiye*<sup>2</sup>*Department of Pharmacognosy, Faculty of Pharmacy, Anadolu University, 26470  
Eskişehir, Türkiye*

<b>Table of Contents</b>	<b>Page</b>
S1: GC-MS chromatogram of the EO from aerial parts of <i>Aster subulatus</i>	2
S2: GC-MS chromatogram of the EO from roots of <i>Aster subulatus</i>	2
S3: Unknown compound 1	3
S4: Unknown compound 2	3
S5: Unknown compound 3	4
S6: Unknown compound 4	4
S7: Unknown compound 5	5
S8: Unknown compound 6	5
S9: Unknown compound 7	6
S10: Table of the unknown compounds	6
S11: TLC plate of the essential oils from <i>Aster subulatus</i>	7
S12: Results of TLC-bioautography method	7

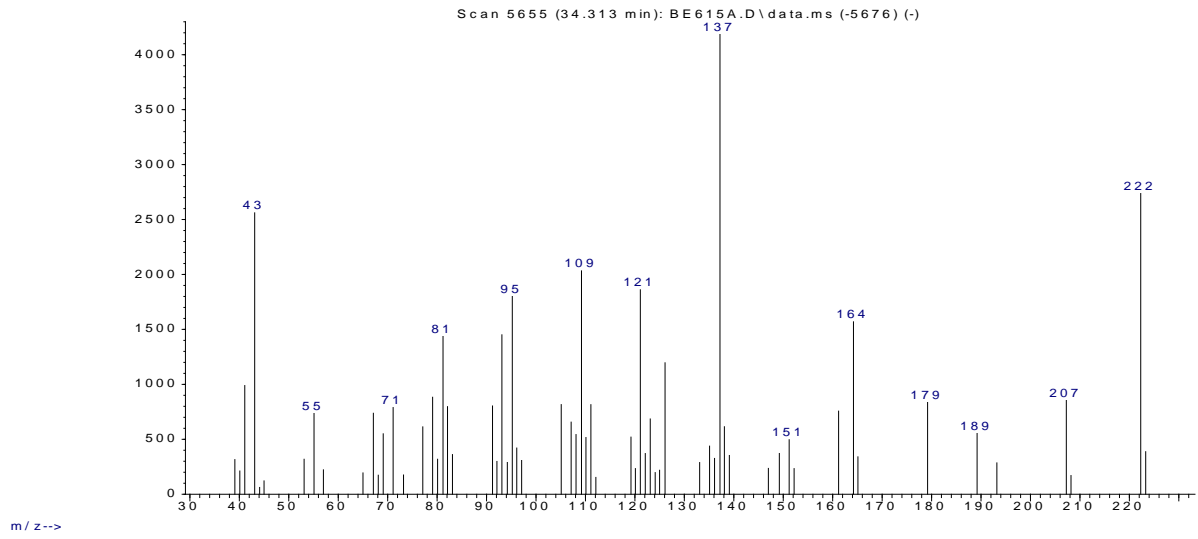


**S1:** GC-MS chromatogram of the EO from aerial parts of *Aster subulatus*

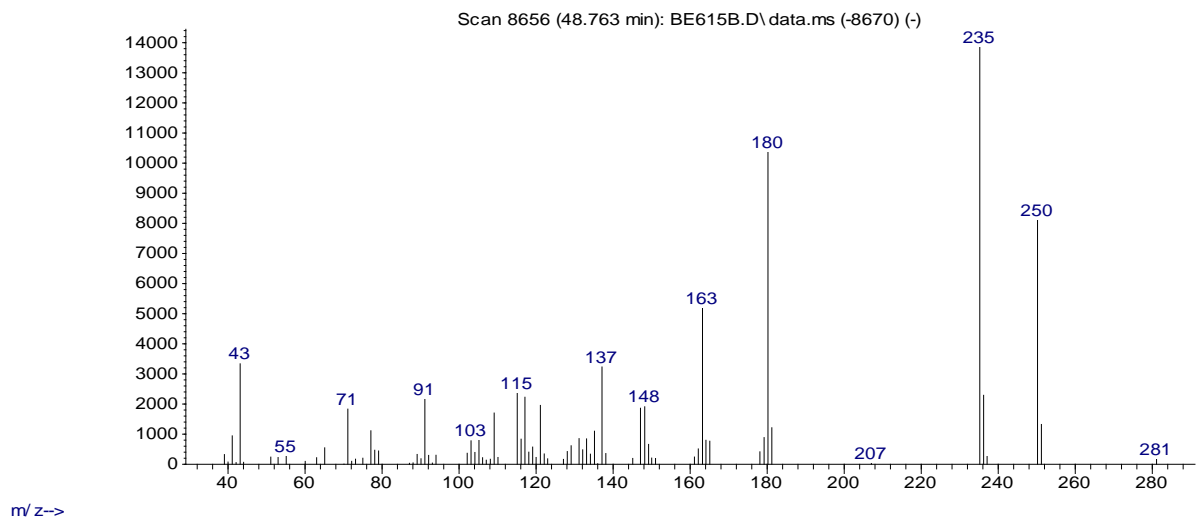


**S2:** GC-MS chromatogram of the EO from roots of *Aster subulatus*

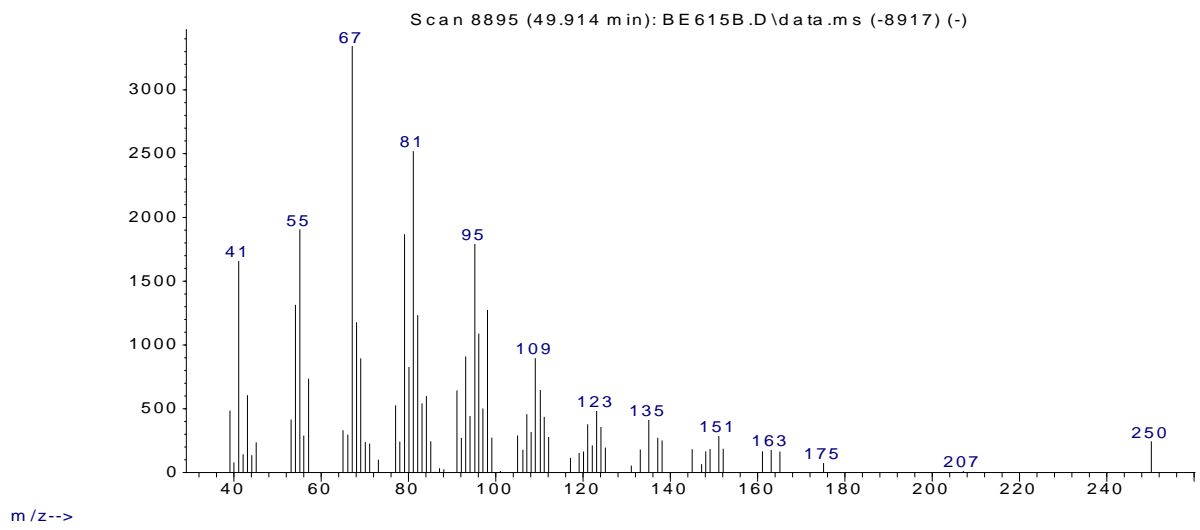
Abundance

**S3: Unknown Compound 1**

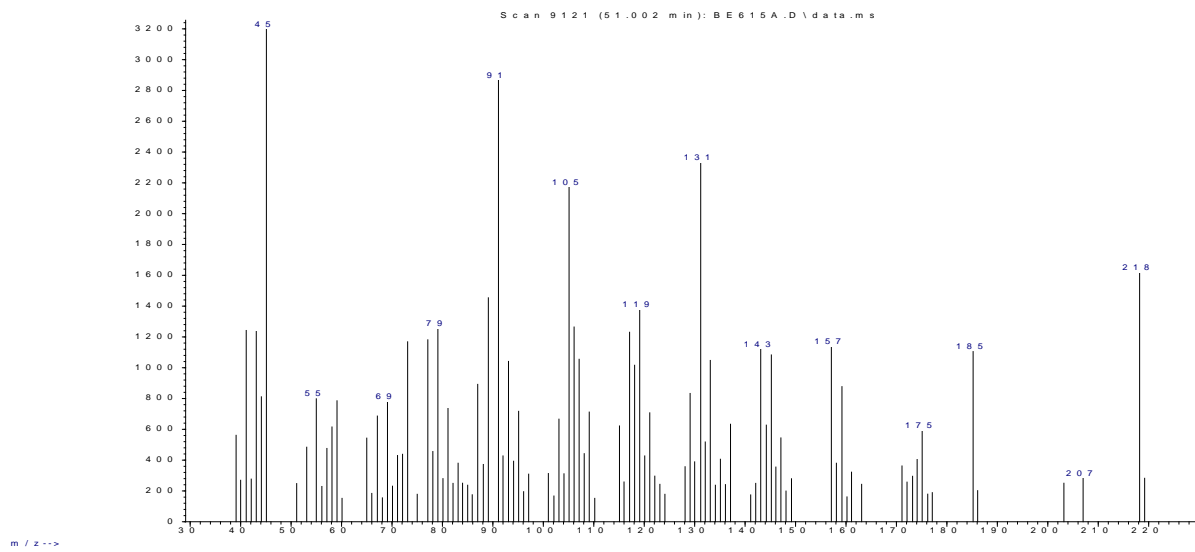
Abundance

**S4: Unknown Compound 2**

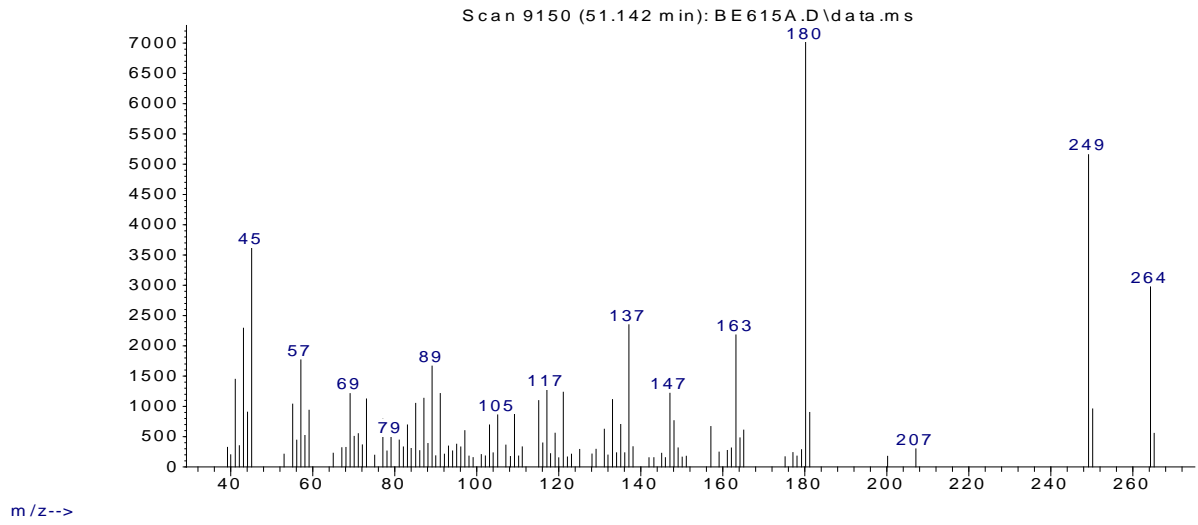
Abundance

**S5: Unknown Compound 3**

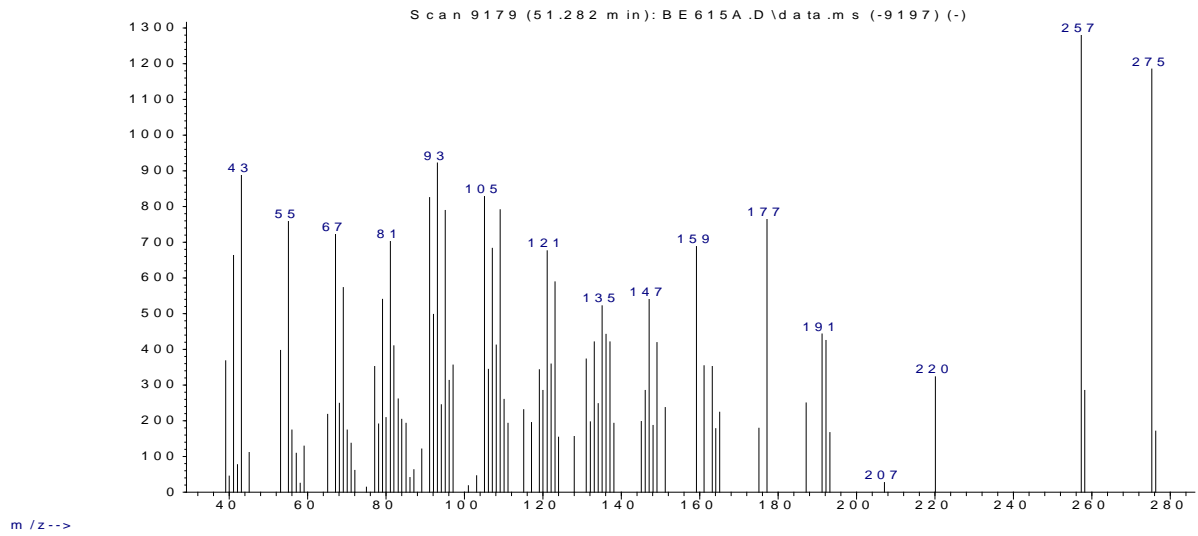
Abundance

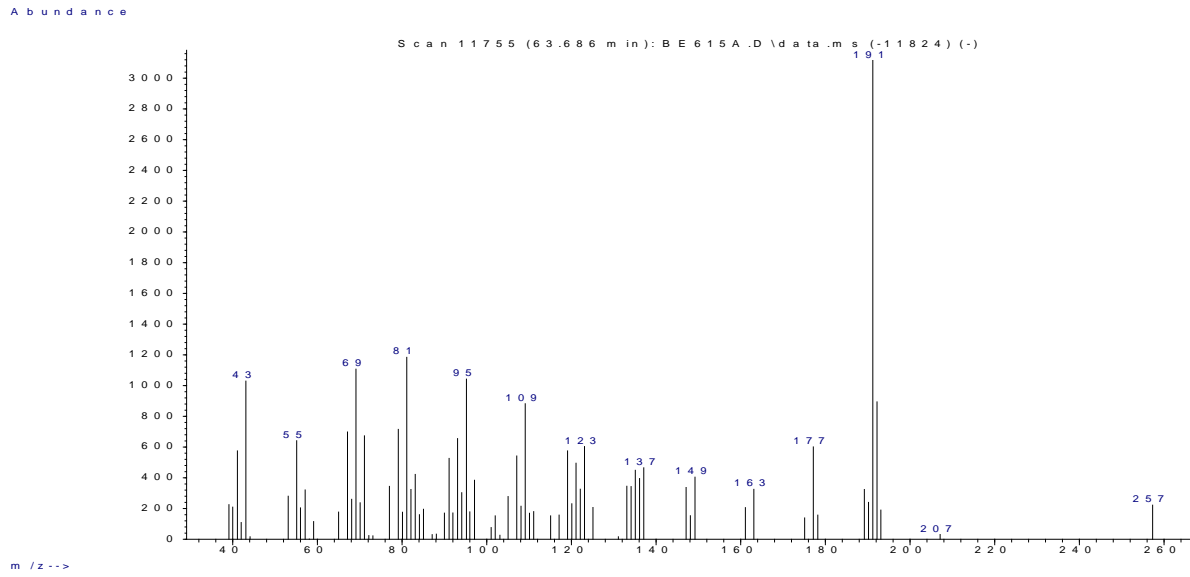
**S6: Unknown Compound 4**

Abundance

**S7: Unknown Compound 5**

Abundance

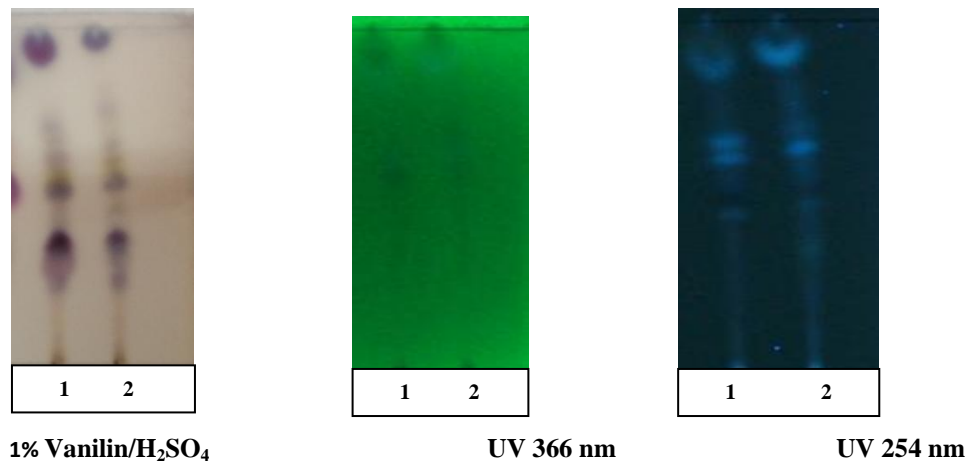
**S8: Unknown Compound 6**



**S9: Unknown Compound 7**

**S10: Table of the unknown compounds**

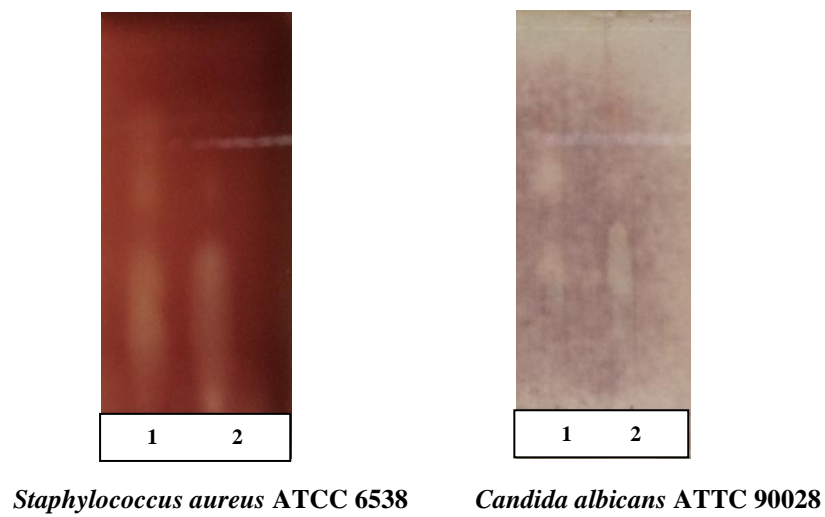
<b>RRI</b>	<b>Compound</b>	<b>A (%)</b>	<b>B (%)</b>
1667	Unknown compound 1	1.6	-
2227	Unknown compound 2	-	2.0
2282	Unknown compound 3	-	1.2
2328	Unknown compound 4	1.1	1.6
2332	Unknown compound 5	5.4	2.6
2340	Unknown compound 6	-	1.1
2700	Unknown compound 7	-	1.3



1: Aerial parts of *Aster subulatus*

2: Roots of *Aster subulatus*

**S11:** TLC plate of the essential oils from *Aster subulatus*



1: Aerial parts of *Aster subulatus*

2: Roots of *Aster subulatus*

**S12:** Results of TLC-bioautography method