

## Supporting Information

*Rec. Nat. Prod.* X:X (202X) XX-XX

### A New Norsesquiterpene, Nor-bisabolan-1,11-diol, from Marine-Derived Fungus *Trichoderma* TD-8

Kai Liu <sup>1,2</sup>, Da-Lei Shi<sup>1</sup>, Wei Gao<sup>1</sup>, Chen Sun<sup>1</sup> and Bing-Chen Wang<sup>3</sup> \*

<sup>1</sup>Dongying Research Institute for Oceanography Development, Dongying, 257091, China

<sup>2</sup>China University of Petroleum, National University Science and Technology Park Postdoctoral Workstation, Dongying, 257091, China

<sup>3</sup>Qingdao Institute of Technology, Qingdao, 266300, China

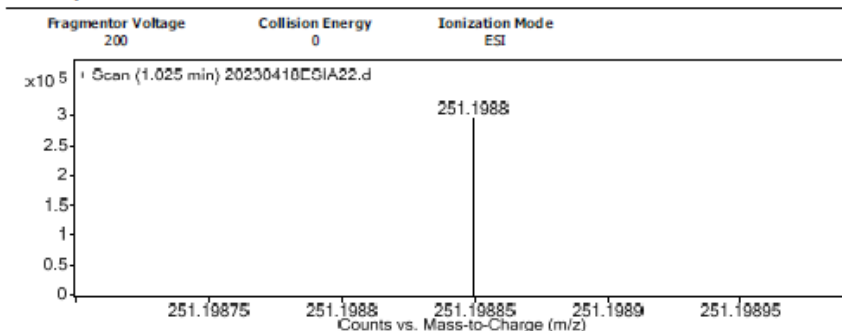
Table of Contents	Page
Figure S1: HR-ESI-MS spectrum of <b>1</b>	2
Figure S2: <sup>1</sup> H-NMR (500 MHz, MeOD) spectrum of <b>1</b>	3
Figure S3: <sup>13</sup> C-NMR and DEPT (125 MHz, MeOD) spectra of <b>1</b>	4
Figure S4: HSQC spectrum of <b>1</b>	5
Figure S5: HMBC spectrum of <b>1</b>	6
Figure S6: Enlarged HMBC spectrum of <b>1</b>	7
Figure S7: Enlarged HMBC spectrum of <b>1</b>	8
Figure S8: COSY spectrum of <b>1</b>	9
Figure S9: Enlarged COSY spectrum of <b>1</b>	10
Figure S10: Enlarged COSY spectrum of <b>1</b>	11
Figure S11: NOESY spectrum of <b>1</b>	12

\*Corresponding author: E-mail: wangbingchen@qit.edu.cn

## Qualitative Analysis Report

Sample Type	Sample	Position
Instrument Name	Agilent G6230 TOF MS	User Name KIB
Acq Method	ESI.m	Acquired Time
IRM Calibration Status	Success	DA Method ESI.m
Comment		
Sample Group		Info.
Acquisition SW	6200 series TOF/6500 series	
Version	Q-TOF B.05.01 (B5125.2)	

### User Spectra



### Peak List

m/z	z	Abund	Formula	Ion
193.1949	1	38343.27		
211.2059	1	78662.48		
242.0179	1	139973.44		
244.0159	1	134855.13		
249.1832	1	189544.03		
251.1988	1	293958.25	C14 H28 Na O2	M+
293.2091	1	73454.8		
321.2038	1	74160.47		
367.2462	1	85914.59		
413.2666	1	86938.13		

### Formula Calculator Element Limits

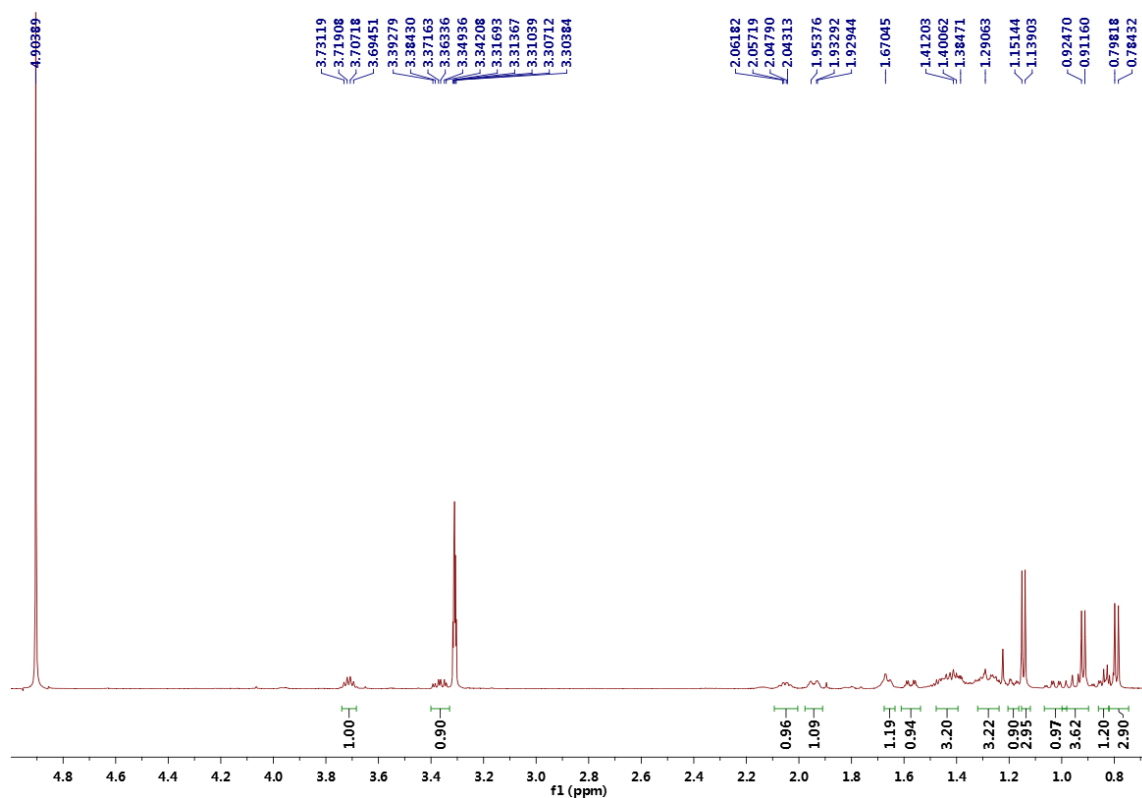
Element	Min	Max
C	0	200
H	0	400
O	0	8
Na	1	1

### Formula Calculator Results

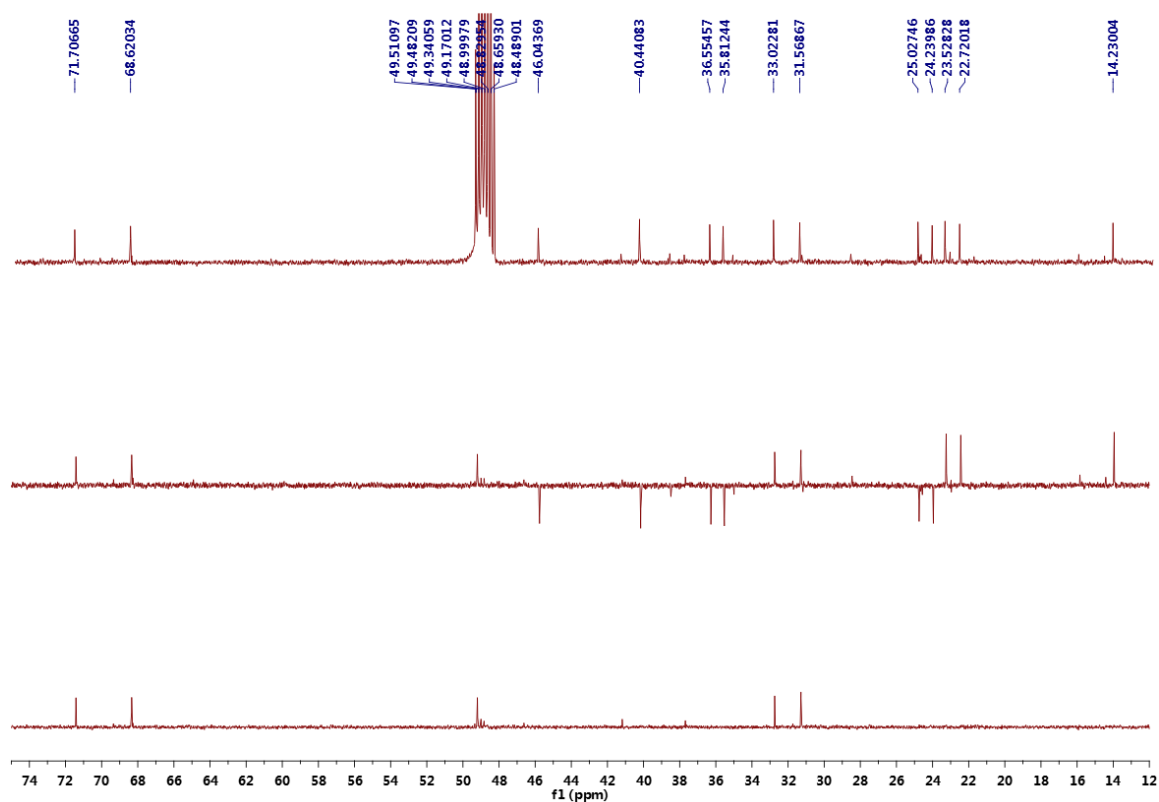
Formula	CalculatedMass	Mz	Diff.(mDa)	Diff. (ppm)	DBE
C14 H28 Na O2	251.1987	251.1988	-0.1	0.4	0.5

--- End Of Report ---

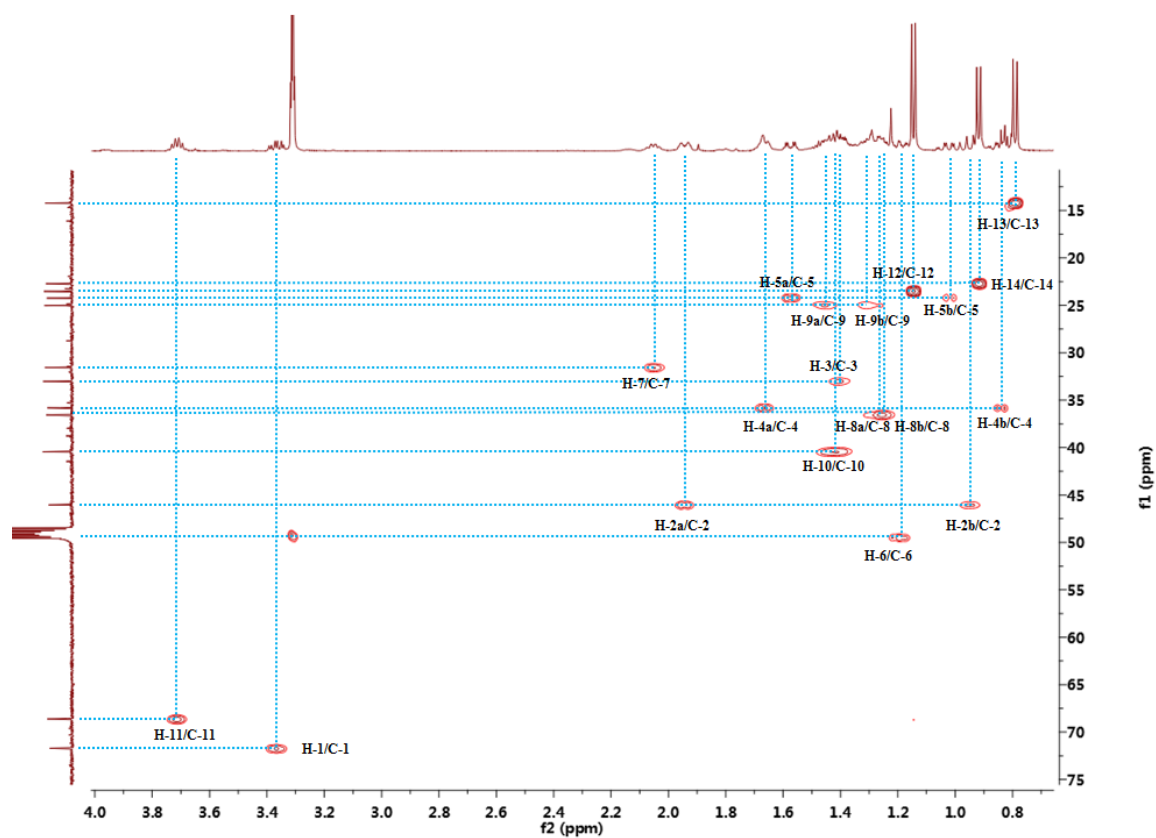
**Figure S1:** HR-ESI-MS spectrum of **1**



**Figure S2:**  $^1\text{H}$ -NMR (500 MHz, MeOD) spectrum of **1**

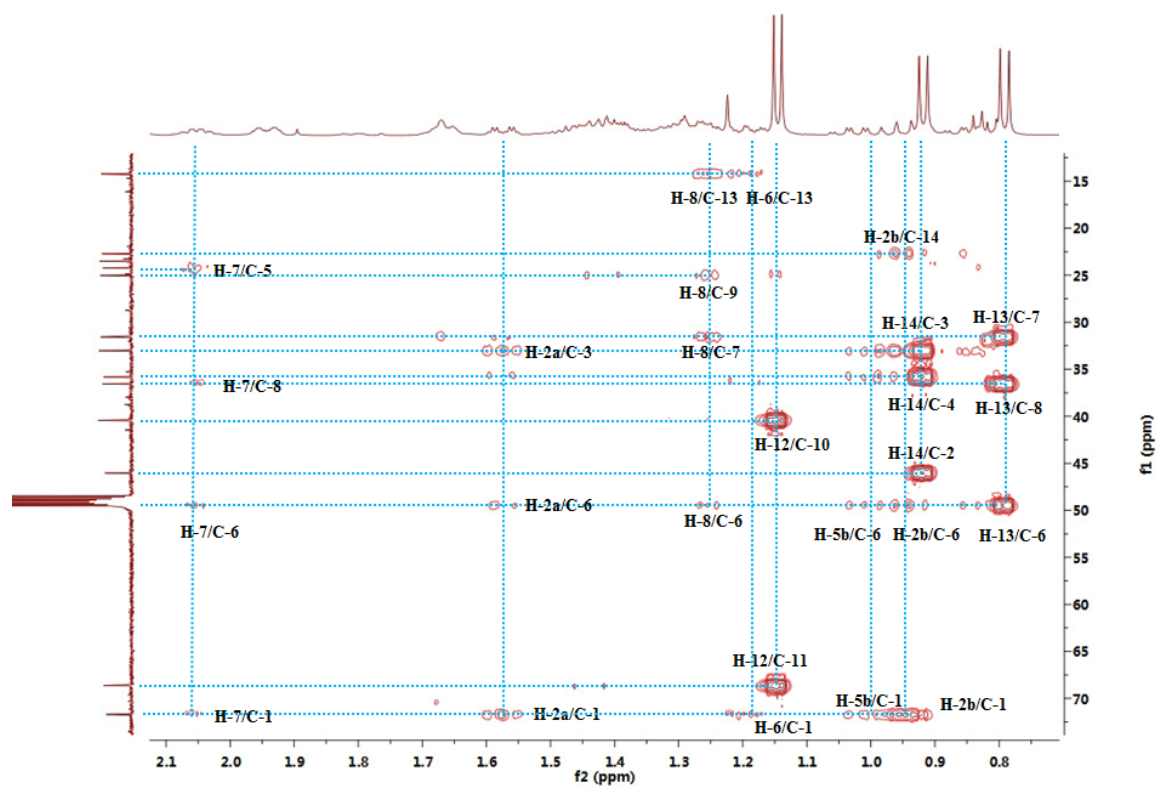


**Figure S3:**  $^{13}\text{C}$ -NMR and DEPT (125 MHz, MeOD) spectra of **1**

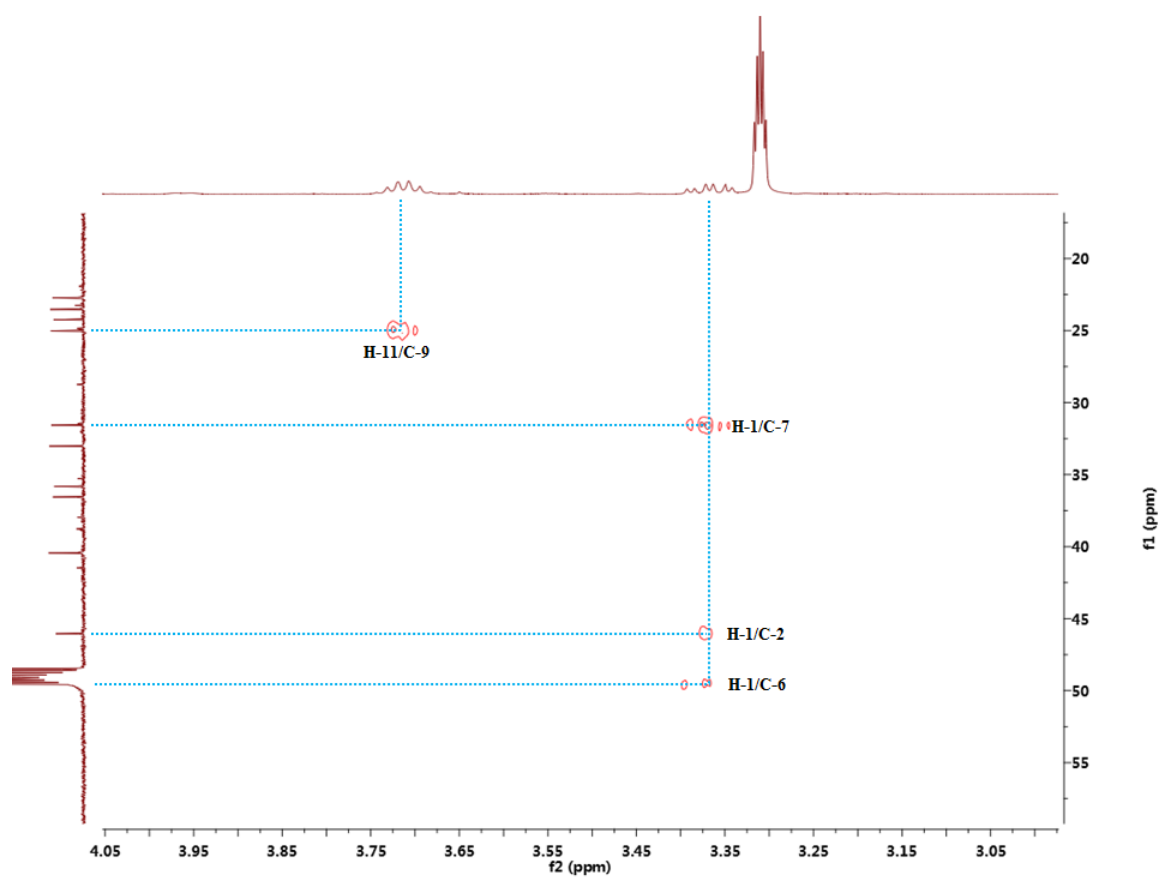


**Figure S4:** HSQC spectrum of **1**



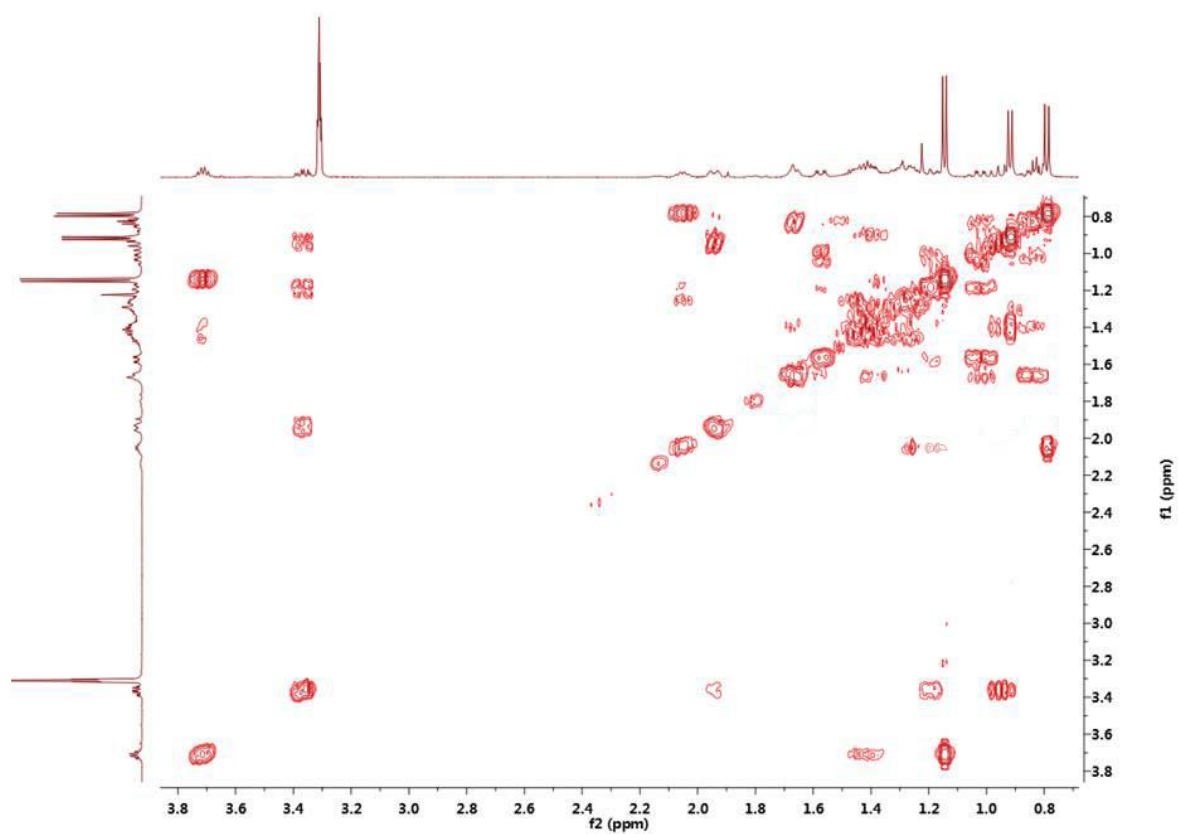


**Figure S6:** Enlarged HMBC spectrum of **1**

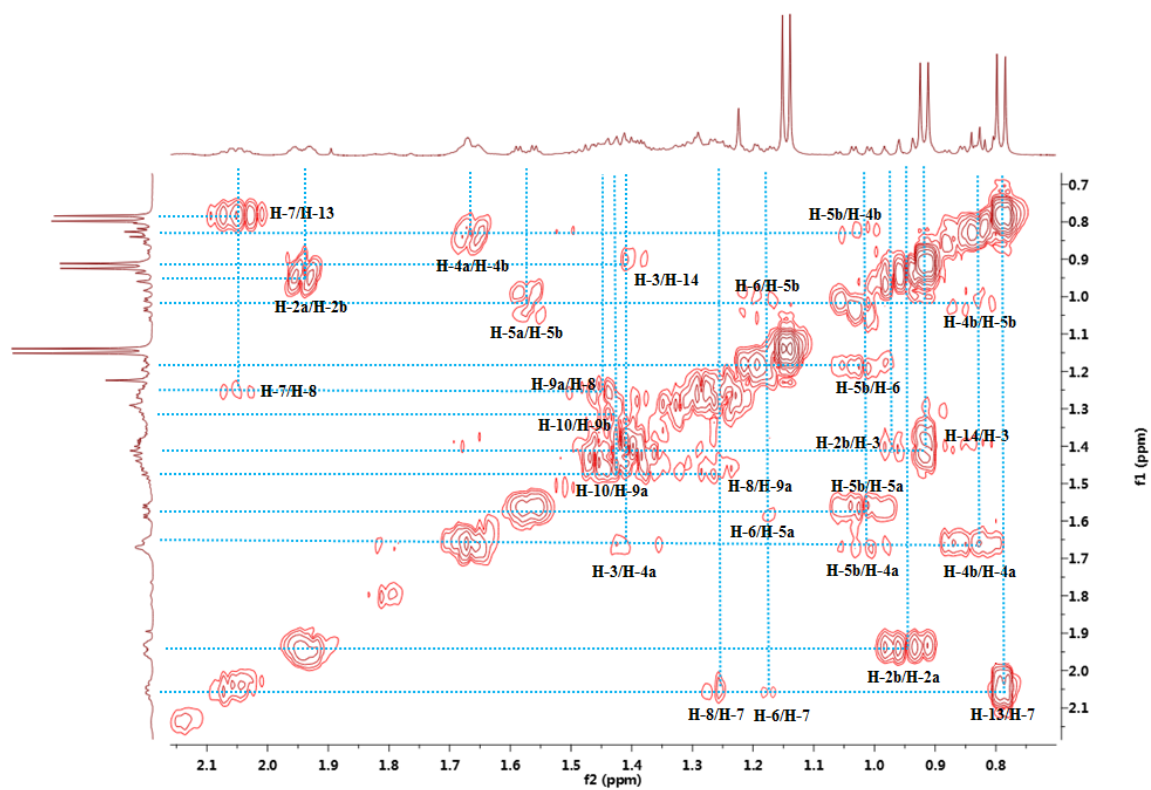


**Figure S7:** Enlarged HMBC spectrum of **1**

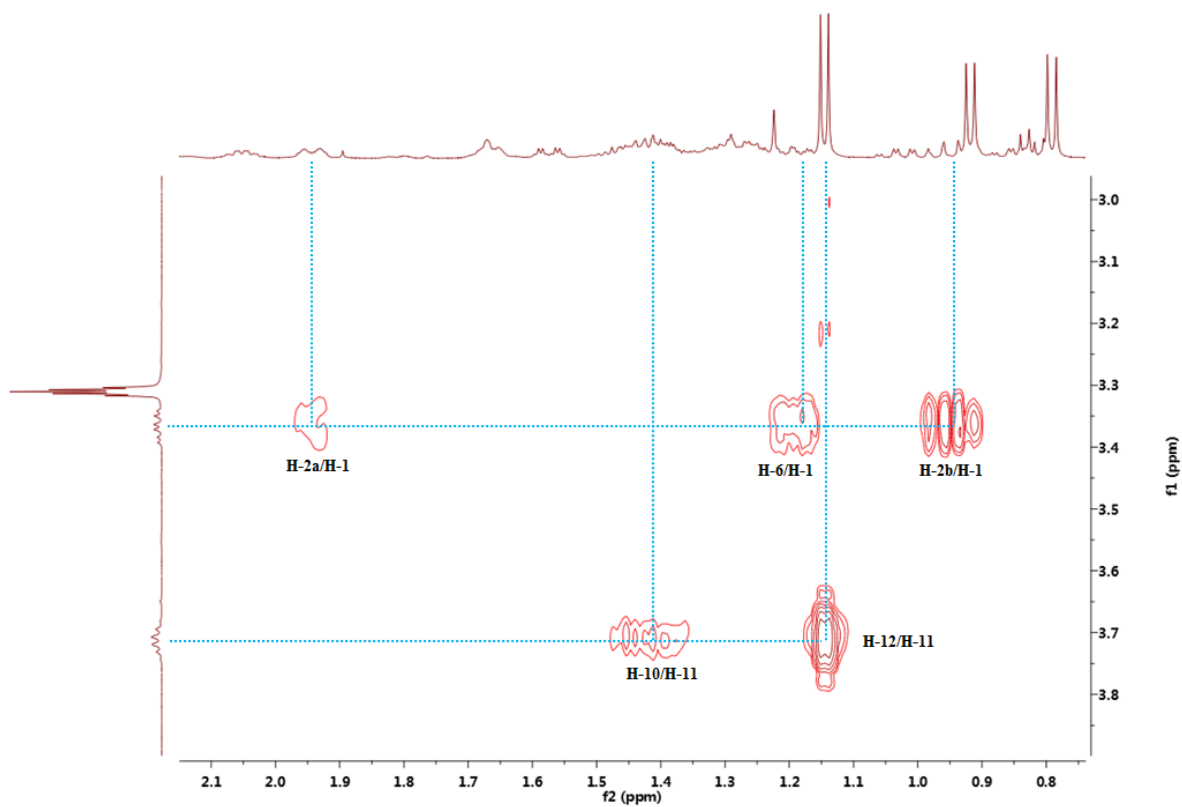




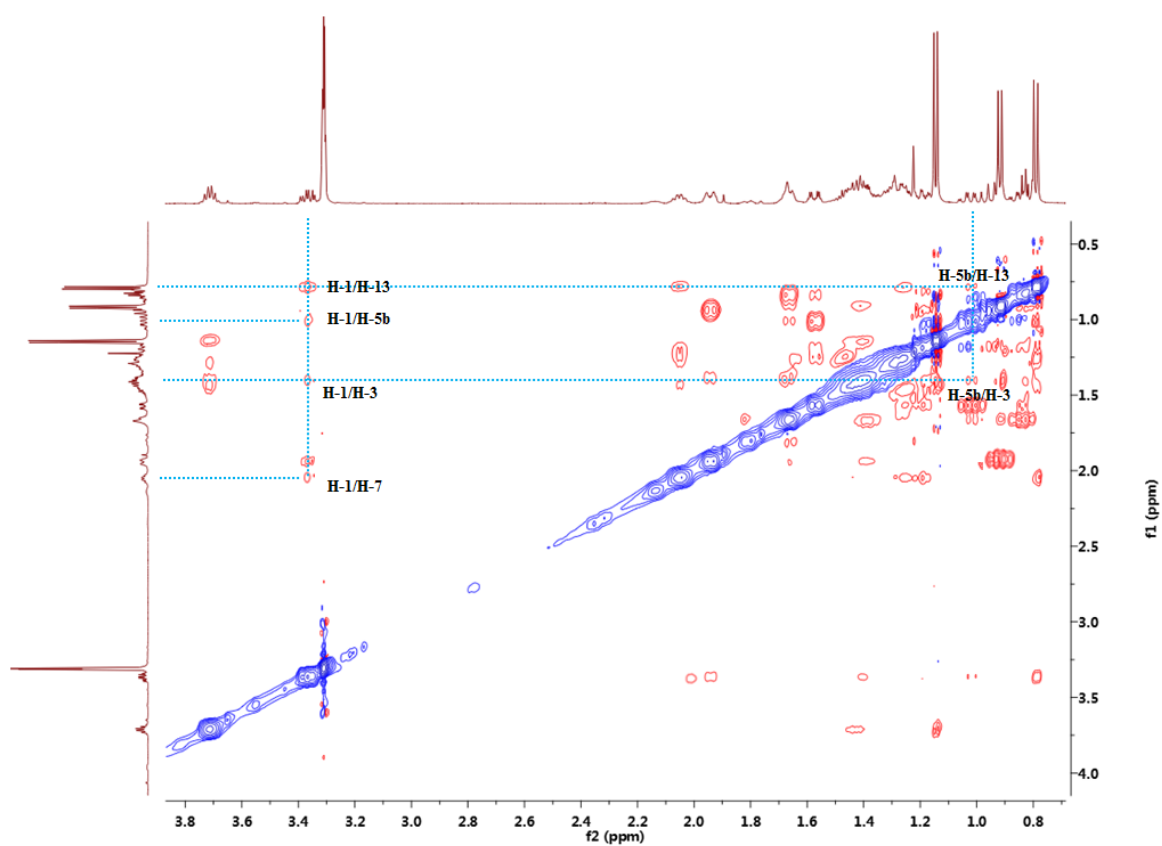
**Figure S8:**  $^1\text{H}$ - $^1\text{H}$  COSY spectrum of **1**



**Figure S9:** Enlarged  $^1\text{H}$ - $^1\text{H}$  COSY spectrum of **1**



**Figure S10:** Enlarged  $^1\text{H}$ - $^1\text{H}$  COSY spectrum of **1**



**Figure S11:** NOESY spectrum of **1**