

Supporting Information

Rec. Nat. Prod. **10:6** (2016) 735-743

New Chemical Constituents from the Endophytic Fungus *Xylaria papulis* Cultivated on Taiwanese *Lepidagathis* *stenophylla*

Yi-Shuan Chen¹, Hsun-Shuo Chang^{1,2*}, Ming-Jen Cheng^{3*}, Hing-Yuen Chan³, Ming-Der Wu³, Sung-Yuan Hsieh³, Hui-Chun Wang¹ and Ih-Sheng Chen^{1,2*}

¹*Graduate Institute of Natural Products, College of Pharmacy, Kaohsiung Medical University, Kaohsiung 807, Taiwan*

²*School of Pharmacy, College of Pharmacy, Kaohsiung Medical University, Kaohsiung 807, Taiwan*

³*Bioresource Collection and Research Center, Food Industry Research and Development Institute, Hsinchu 300, Taiwan*

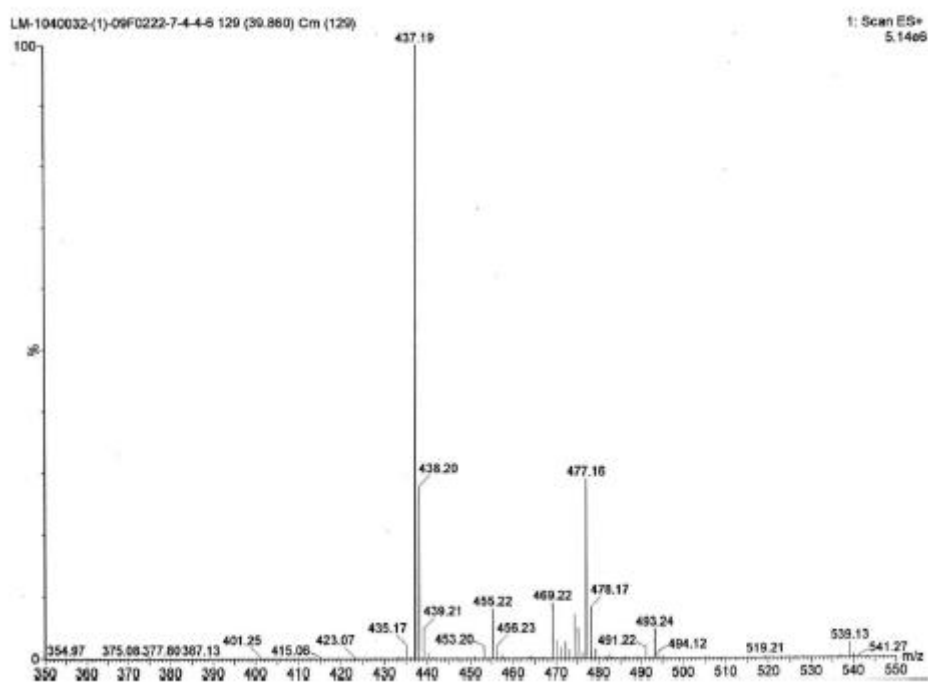
Table of Contents	Page
S1 : ESI-MS Spectrum of Compound 1 (xylapapuside A)	2
S2 : HR-ESI-MS Spectrum of Compound 1 (xylapapuside A)	3
S3 : ¹ H-NMR (600 MHz, CD ₃ OD) Spectrum of Compound 1 (xylapapuside A)	4
S4 : ¹³ C-NMR and DEPT (150 MHz, CD ₃ OD) Spectrum of Compound 1 (xylapapuside A)	5
S5 : HSQC Spectrum of Compound 1 (xylapapuside A)	6
S6 : COSY Spectrum of Compound 1 (xylapapuside A)	6
S7 : HMBC Spectrum of Compound 1 (xylapapuside A)	7
S8 : ROESY Spectrum of Compound 1 (xylapapuside A)	7
S9 : ESI-MS Spectrum of Compound 2 (xylapapuside B)	8
S10 : HR-ESI-MS Spectrum of Compound 2 (xylapapuside B)	9
S11 : ¹ H-NMR (600 MHz, CD ₃ OD) Spectrum of Compound 2 (xylapapuside B)	10
S12 : ¹³ C-NMR and DEPT (150 MHz, CD ₃ OD) Spectrum of Compound 2 (xylapapuside B)	11
S13 : HSQC Spectrum of Compound 2 (xylapapuside B)	12

S14 : COSY Spectrum of Compound **2** (xylapapuside B) 12

S15 : HMBC Spectrum of Compound **2** (xylapapuside B)..... 13

S16 : ROESY Spectrum of Compound **2** (xylapapuside B) 13

*Corresponding authors: E-Mail: m635013@kmu.edu.tw; Phone: (+886)-(0)7-312-1101, ext. 2191



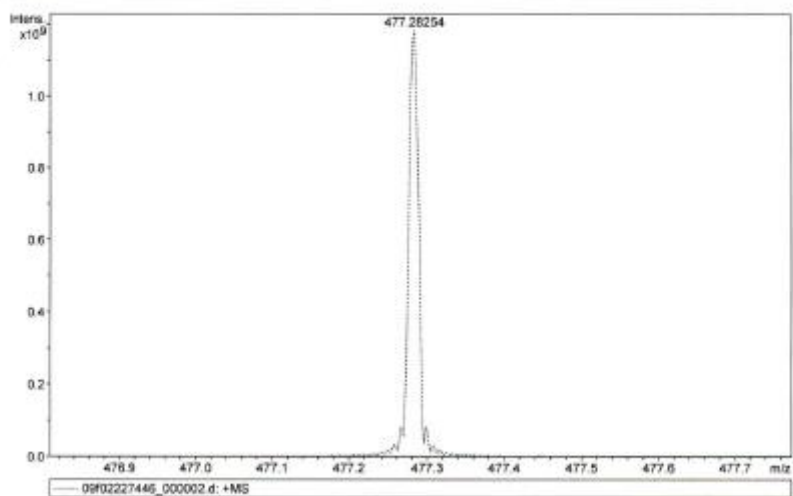
S1 : ESI-MS Spectrum of Compound **1** (xylapapuside A)

Analysis Info

Analysis Name: D:\Data\09\09\02227446_000002.d
Method: broadband first signal
Sample Name: 09F0222-7-4-4-6
Comment: ESI-Positive

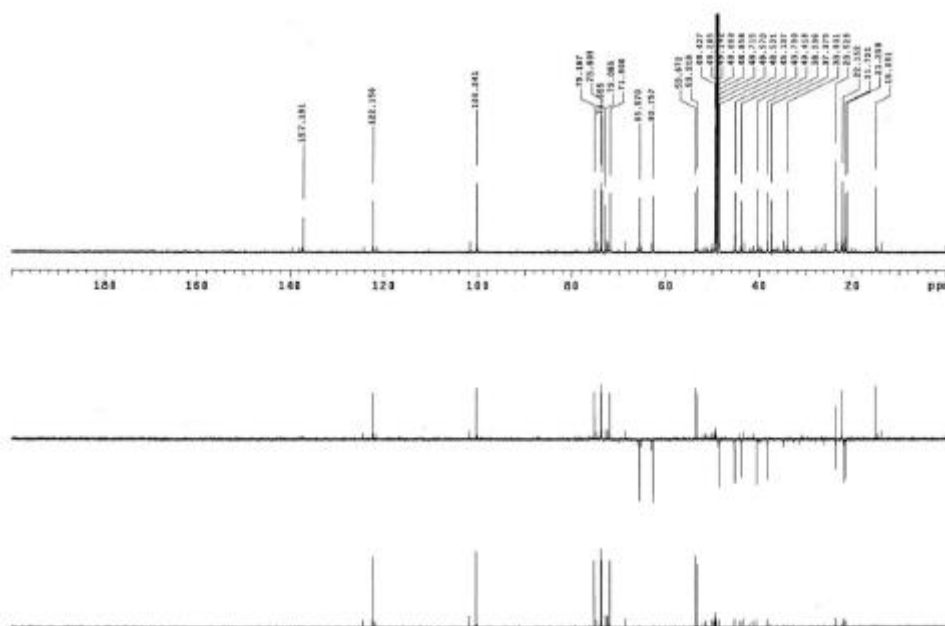
4/29/2015 2:24:02 PM

Instrument: FT-MS solarix



Meas. m/z	#	Formula	Score	m/z	err [mDa]	err [ppm]	mSigma	rdB	e ⁻ Conf	N-Rule
477.28254	1	C ₂₉ H ₄₂ NaO ₇	100.00	477.28227	-0.27	-0.56	17.1	4.5	even	ok

S2 : HR-ESI-MS Spectrum of Compound 1 (xylapapaside A)



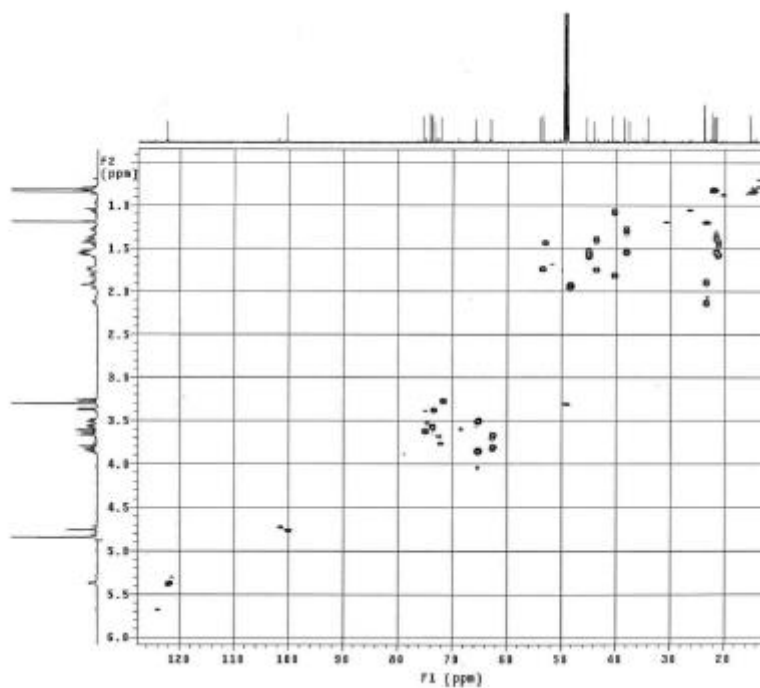
S4 : ^{13}C -NMR and DEPT (150 MHz, CD_3OD) Spectra of Compound **1** (xylapapuside A)

^{13}C -NMR (150 MHz, CD_3OD)

δ : 15.1 (C-20), 21.3 (C-2), 21.7 (C-11), 22.2 (C-17), 23.5 (C-6, C-19), 33.9 (C-13), 37.4 (C-10), 38.2 (C-12), 40.4 (C-1), 43.8 (C-3), 45.1 (C-15) 48.5 (C-14) 53.2 (C-5), 53.7 (C-9), 62.8 (C-6'), 65.5 (C-16), 71.9 (C-4'), 73.1 (C-4), 73.6 (C-2'), 73.8 (C-5'), 75.2 (C-3'), 100.2 (C-1'), 122.2 (C-7), 137.2 (C-8)

wt1-7-4-0-0-ed0a

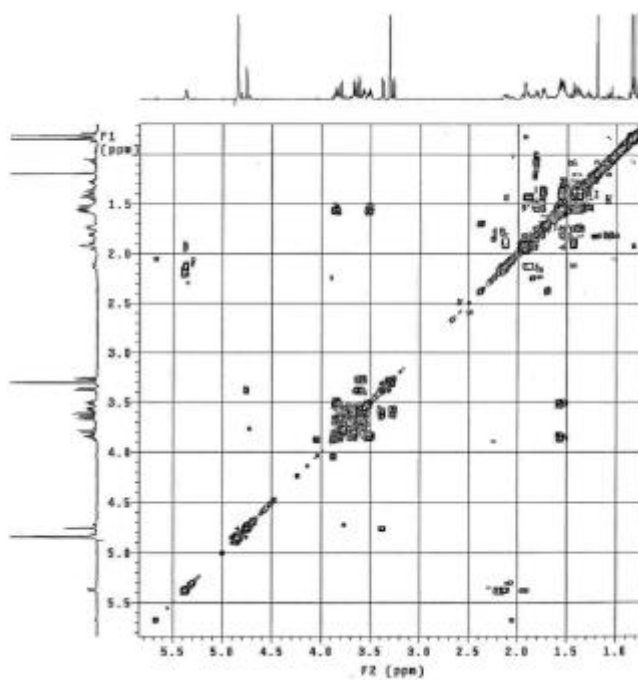
Pulse Sequence: gpcpgp



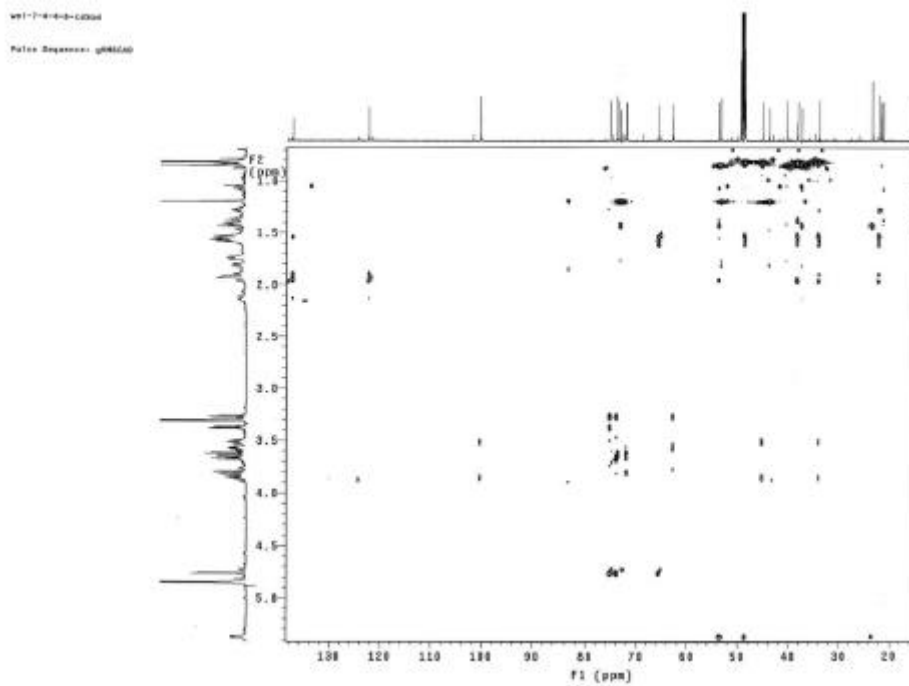
S5 : HSQC Spectrum of Compound **1** (xylapapuside A)

wt1-7-0-0-0-ed0a

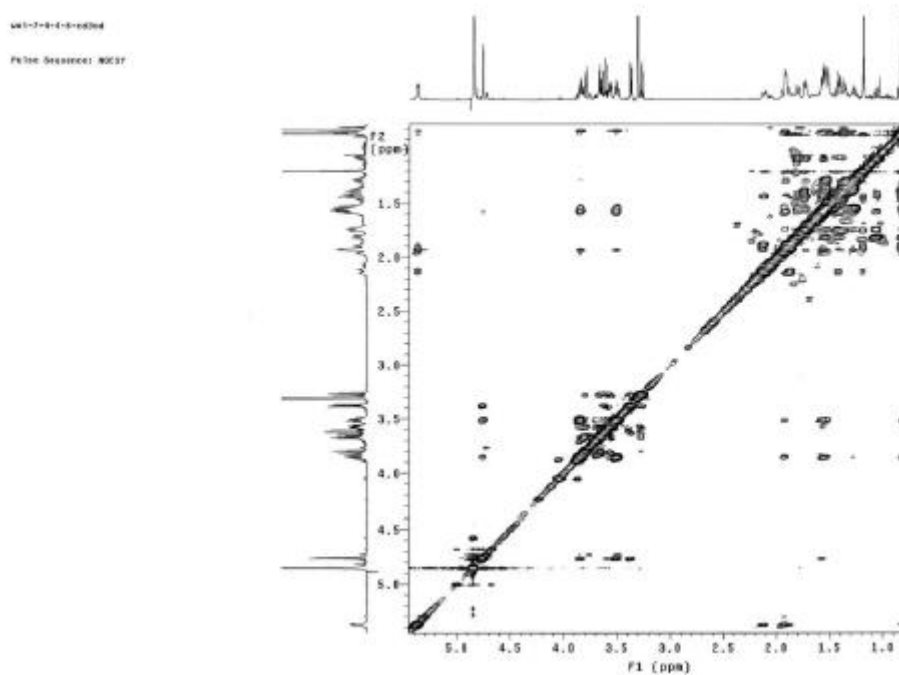
Pulse Sequence: gpcpgp



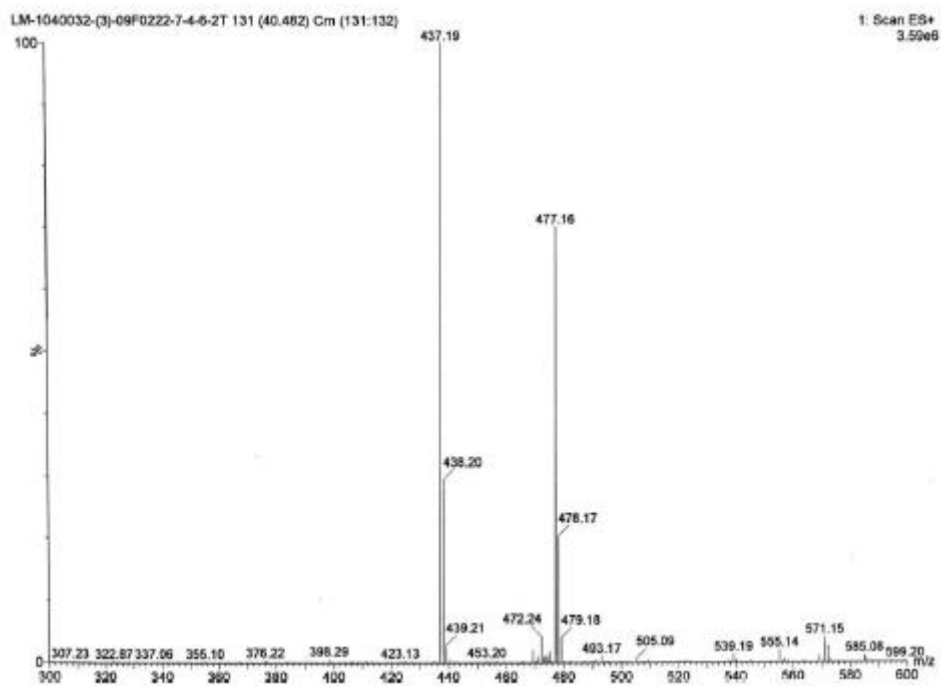
S6 : COSY Spectrum of Compound **1** (xylapapuside A)



S7 : HMBC Spectrum of Compound **1** (xylapapuside A)

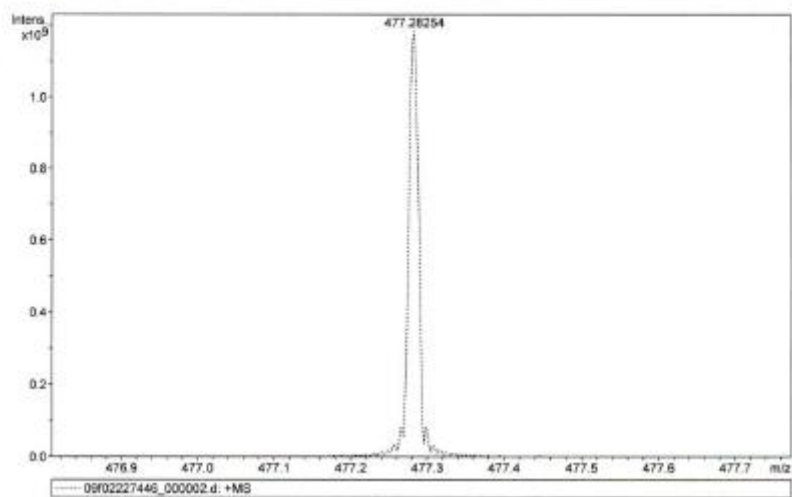


S8 : NOESY Spectrum of Compound **1** (xylapapuside A)

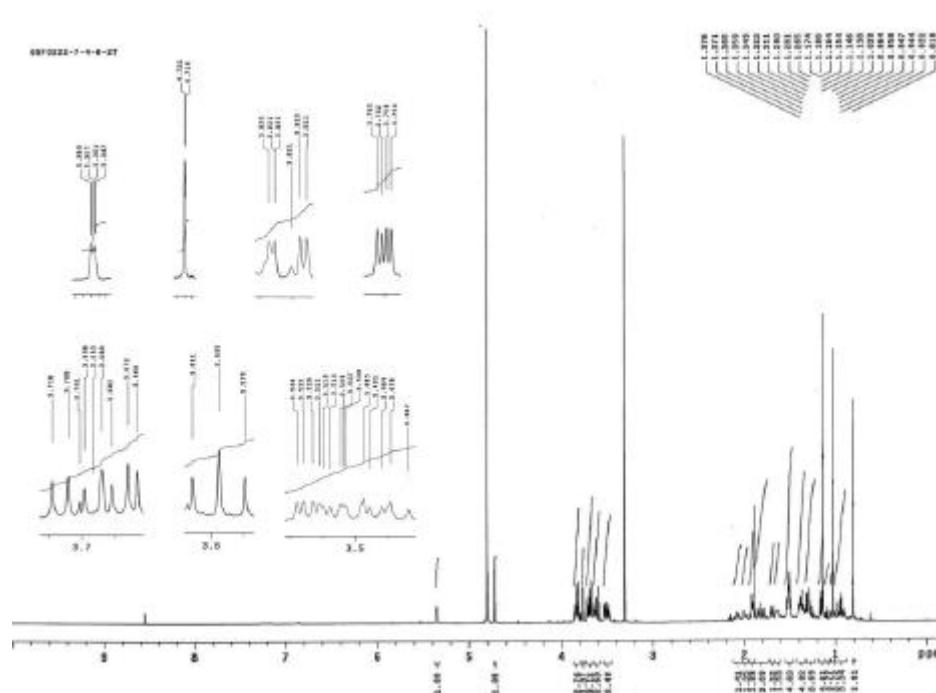


S9 : ESI-MS Spectrum of Compound **2** (xylapapuside B)

Analysis Info
Analysis Name D:\Data\09F02227446_000002.d
Method broadband first signal
Sample Name 09F0222-7-4-4-6
Comment ESI-Positive
4/29/2015 2:24:02 PM
Instrument: FT-MS solarX



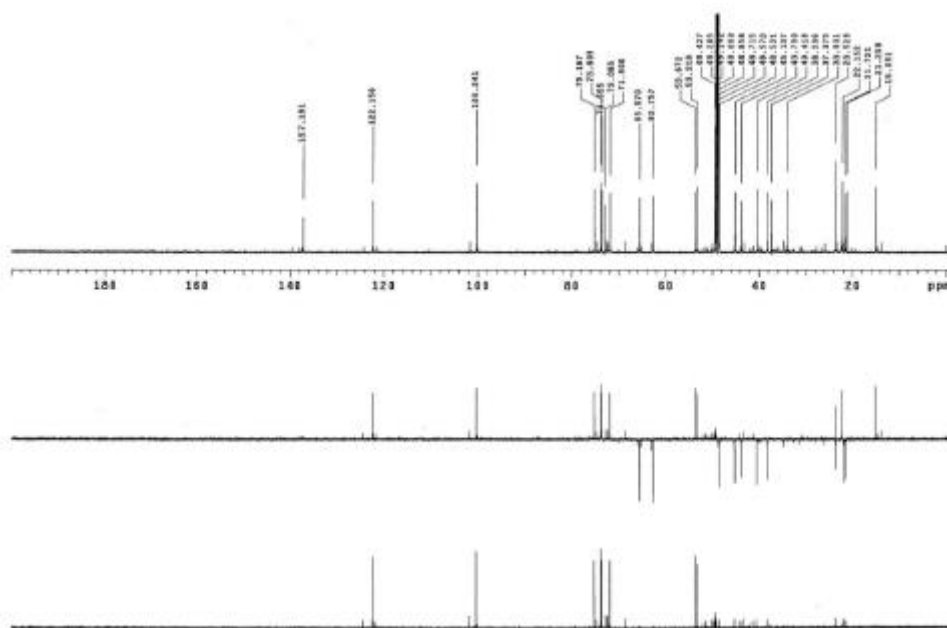
S10 : HR-ESI-MS Spectrum of Compound **2** (xylapapuside B)



S11 : $^1\text{H-NMR}$ (600 MHz, CD_3OD) Spectrum of Compound **2** (xylapapaside B)

$^1\text{H-NMR}$ (600 MHz, CD_3OD)

δ : 0.81 (3H, s, H-17), 1.03 (3H, s, H-20), 1.03 (1H, m, H-1b), 1.15 (3H, s, H-18), 1.16 (1H, m, H-5), 1.26 (1H, m, H-12b), 1.34 (1H, m, H-11b), 1.37 (1H, m, H-3b), 1.40 (1H, m, H-2b), 1.50 (2H, m, H-15), 1.52 (2H, m, H-11a, H-12a), 1.64 (1H, m, H-9), 1.70 (1H, m, H-3a), 1.80 (1H, m, H-2a), 1.84 (1H, m, H-1a), 1.93 (2H, m, H-14), 1.99 (1H, m, H-6b), 2.07 (1H, m, H-6a), 3.49 (1H, ddd, $J = 15.9, 7.7, 2.3$ Hz, H-16b), 3.53 (1H, ddd, $J = 9.6, 6.0, 2.5$ Hz, H-5'), 3.60 (1H, dd, $J = 9.6, 9.6$ Hz, H-4'), 3.68 (1H, dd, $J = 9.6, 3.3$ Hz, H-3'), 3.71 (1H, dd, $J = 12.0, 6.0$ Hz, H-6'b), 3.77 (1H, dd, $J = 3.3, 1.8$ Hz, H-2'), 3.83 (1H, dd, $J = 12.0, 2.5$ Hz, H-6'a), 3.84 (1H, ddd, $J = 15.9, 7.2, 2.6$ Hz, H-16a), 4.72 (1H, d, $J = 1.8$ Hz, H-1'), 5.36 (1H, dd, $J = 6.0, 1.8$ Hz, H-7)

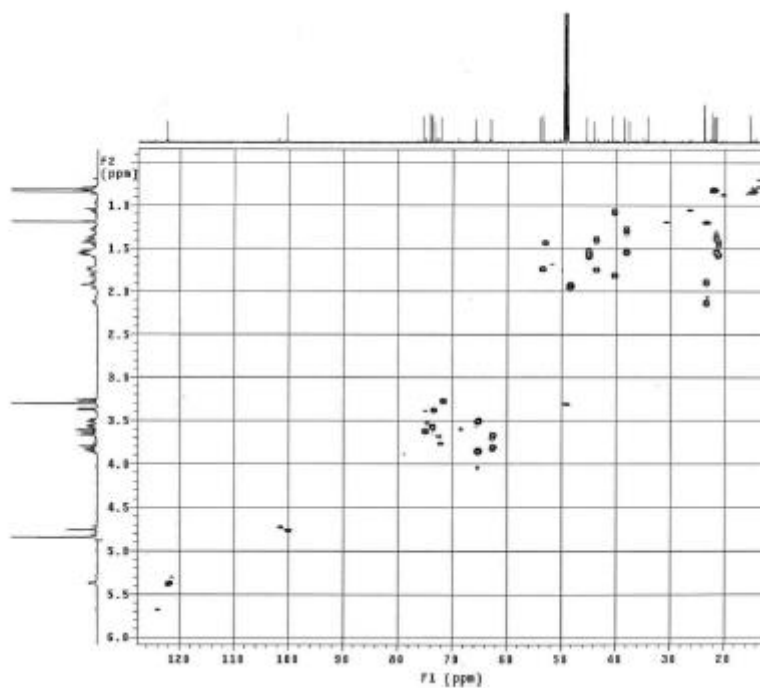


S12 : ^{13}C -NMR and DEPT (150 MHz, CD_3OD) Spectra of Compound **2** (xylapapuside B)

^{13}C -NMR (150 MHz, CD_3OD)

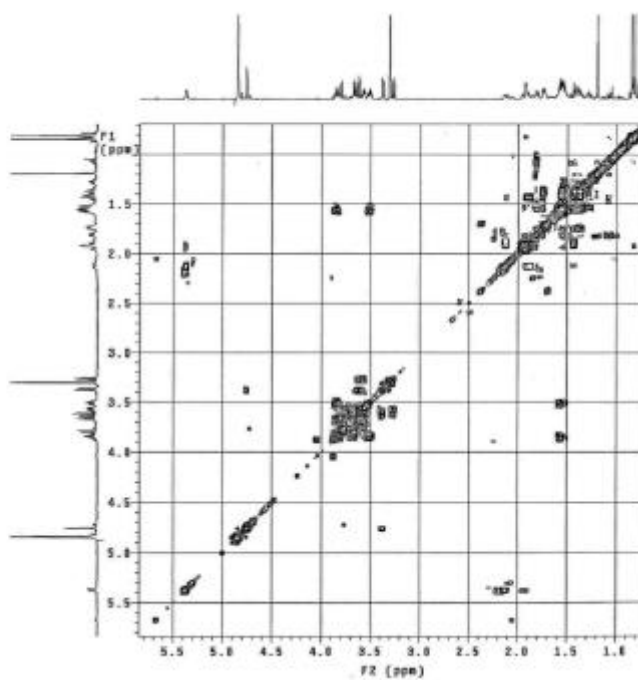
δ : 15.0 (C-20), 19.1 (C-2), 21.3 (C-11), 22.2 (C-17), 23.5 (C-6), 30.8 (C-18), 34.1 (C-13), 36.4 (C-10), 38.3 (C-12), 40.5 (C-1), 42.0 (C-3), 45.3 (C-15), 48.6 (C-14), 50.5 (C-5), 52.7 (C-9), 63.0 (C-6'), 65.2 (C-16), 68.7 (C-4'), 72.0 (C-4), 72.3 (C-2'), 72.7 (C-3'), 74.7 (C-5'), 101.7 (C-1'), 122.2 (C-7), 137.1 (C-8)

wt1-7-4-0-0-ed0a
Pulse Sequence: gpczcg

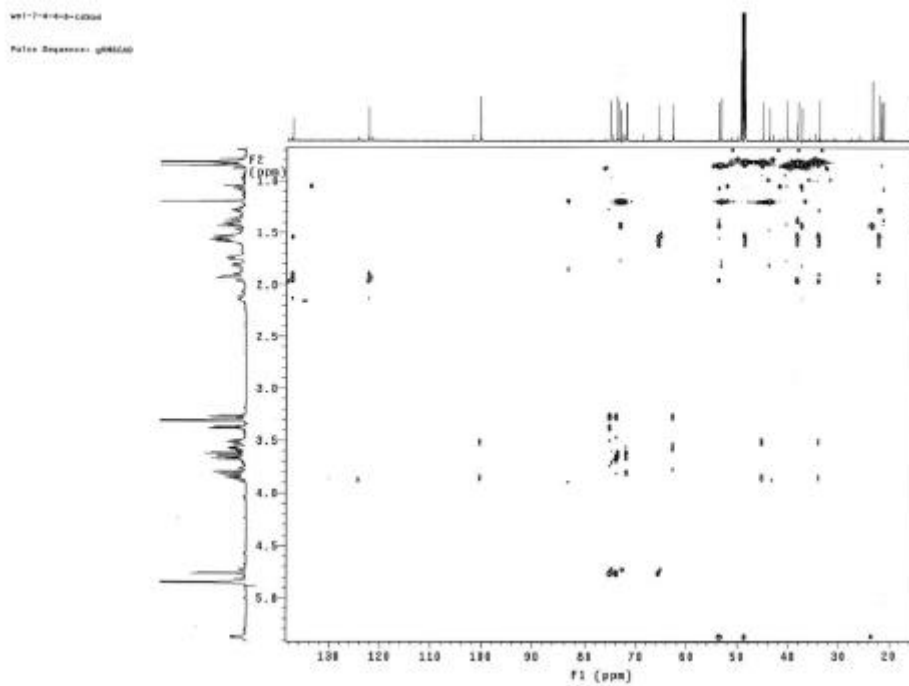


S13 : HSQC Spectrum of Compound **2** (xylapapuside B)

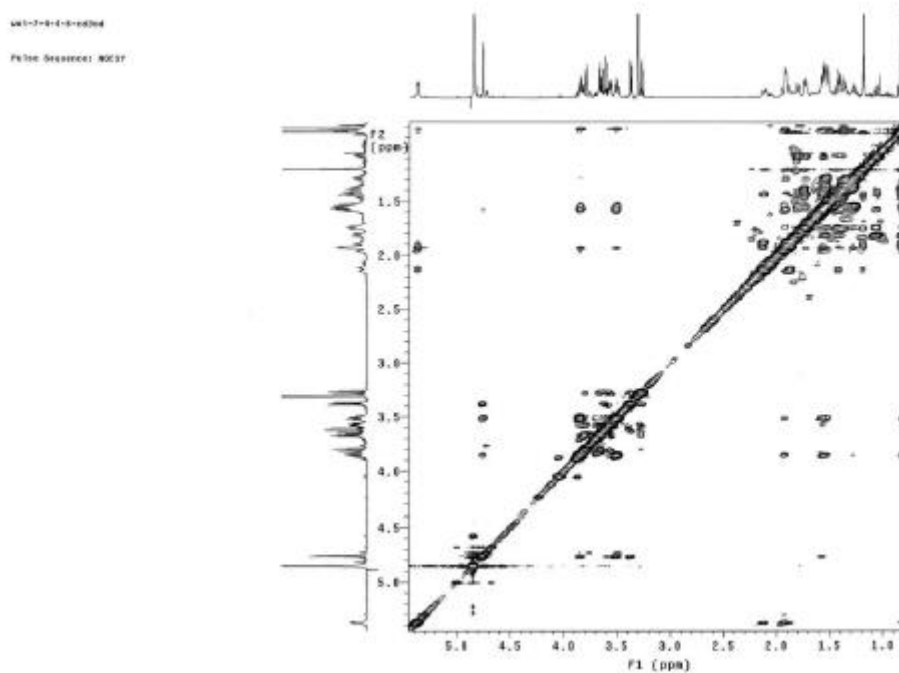
wt1-7-0-0-0-ed0a
Pulse Sequence: gpcyf



S14 : COSY Spectrum of Compound **2** (xylapapuside B)



S15 : HMBC Spectrum of Compound **2** (xylapapuside B)



S16 : NOESY Spectrum of Compound **2** (xylapapuside B)