

Supporting Information

Rec. Nat. Prod. 13:1 (2019) 24-36

Biological Activities of Various Extracts from *Salvia cassia* Sam. ex Rech.f. and Chemical Composition of Its Most Active Extract

**Burcu Sen Utsukarci^{1*}, Bahar Gurdal², Merve Bilgin³, Dilek Satana⁴,
Betul Demirci⁵, Nur Tan¹ and Afife Mat¹**

¹ *Faculty of Pharmacy, Department of Pharmacognosy, Istanbul University, Istanbul 34116, Türkiye*

² *Faculty of Pharmacy, Department of Pharmaceutical Botany, Istanbul University, Istanbul 34116, Türkiye*

³ *Faculty of Pharmacy, Department of Pharmaceutical Microbiology, Istanbul Yeni Yuzyil University, Istanbul 34010, Türkiye*

⁴ *Faculty of Medicine, Department of Microbiology and Clinical Microbiology, Istanbul University, Istanbul 34093, Türkiye*

⁵ *Faculty of Pharmacy, Department of Pharmacognosy, Anadolu University, Eskisehir 26470, Türkiye*

Table of Contents	Page
Contents	
Figure S1. The chromatogram of the GC-MS analysis of essential oil (EO).	2

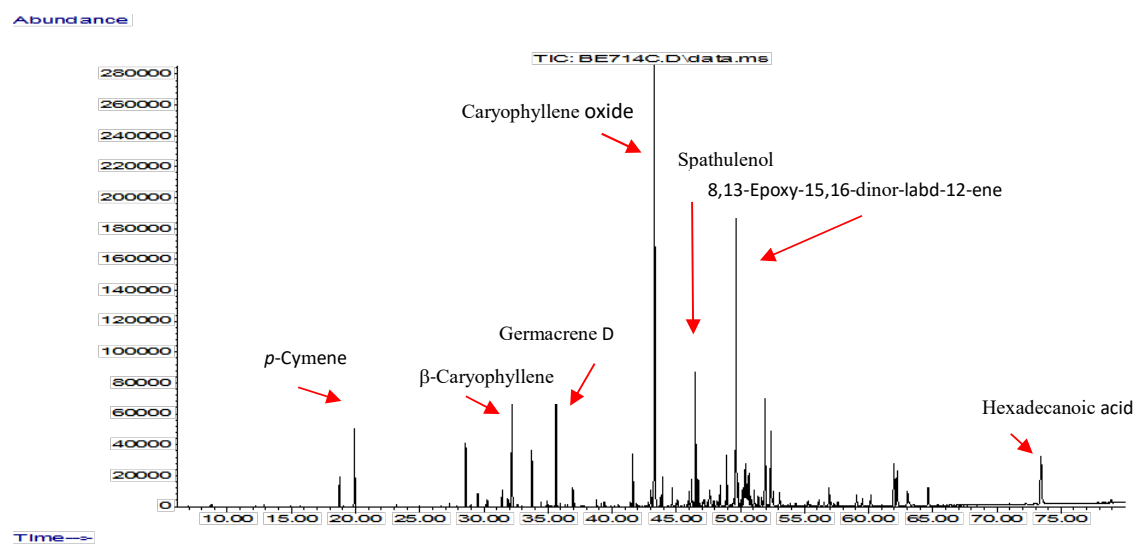


Figure S1. The chromatogram of the GC-MS analysis of essential oil (EO)