

Supporting Information

Rec. Nat. Prod. 13:6 (2019) 440-445

A New Aporphine Alkaloid from *Illigera aromatic*

Kuiwu Wang^{1,*}, Xiaoxin Wang¹, Haijiang Zhang² and Yichao Ge³

¹ School of Food and Biotechnology, Zhejiang Gongshang University, Hangzhou, 310018, P.R. China

² Jiangsu Key Laboratory of Regional Resource Exploitation and Medicinal Research, Huaiyin Institute of Technology, Huaian 223003, P. R. China

³ Ocean College, Zhejiang University, Hangzhou 310058, P. R. China

Table of Contents	Page
Figure S1: HR-ESI-MS (Positive mode) spectrum of compound 1	2
Figure S2: ESI-MS (Positive mode) of compound 1 (362 [M+Na] ⁺)	2
Figure S3: ESI-MS (Negative mode) of compound 1 (338 [M-H] ⁻)	3
Figure S4: ESI-MS ² (Negative mode) of compound 1	3
Figure S5: ESI-MS ³ (Negative mode) of compound 1	4
Figure S6: ESI-MS ⁴ (Negative mode) of compound 1	4
Figure S7: ESI-MS ⁵ (Negative mode) of compound 1	5
Figure S8: ¹ H NMR spectrum in DMSO- <i>d</i> ₆ of compound 1	6
Figure S9: ¹³ C NMR spectrum in DMSO- <i>d</i> ₆ of compound 1	7
Figure S10: DEPT 135 spectrum of compound 1	8
Figure S11: DEPT 90 spectrum of compound 1	9
Figure S12: ¹ H- ¹ H COSY spectrum of compound 1	10
Figure S13: HMQC spectrum of compound 1	11
Figure S14: HMBC spectrum of compound 1	12
Figure S15: HMBC spectrum of compound 1 (Part 1)	13
Figure S16: HMBC spectrum of compound 1 (Part 2)	14
Figure S17: HMBC spectrum of compound 1 (Part 3)	15
Figure S18: NOESY spectrum of compound 1	16
Figure S19: IR spectrum of compound 1	17
Figure S20: UV spectrum of compound 1	17

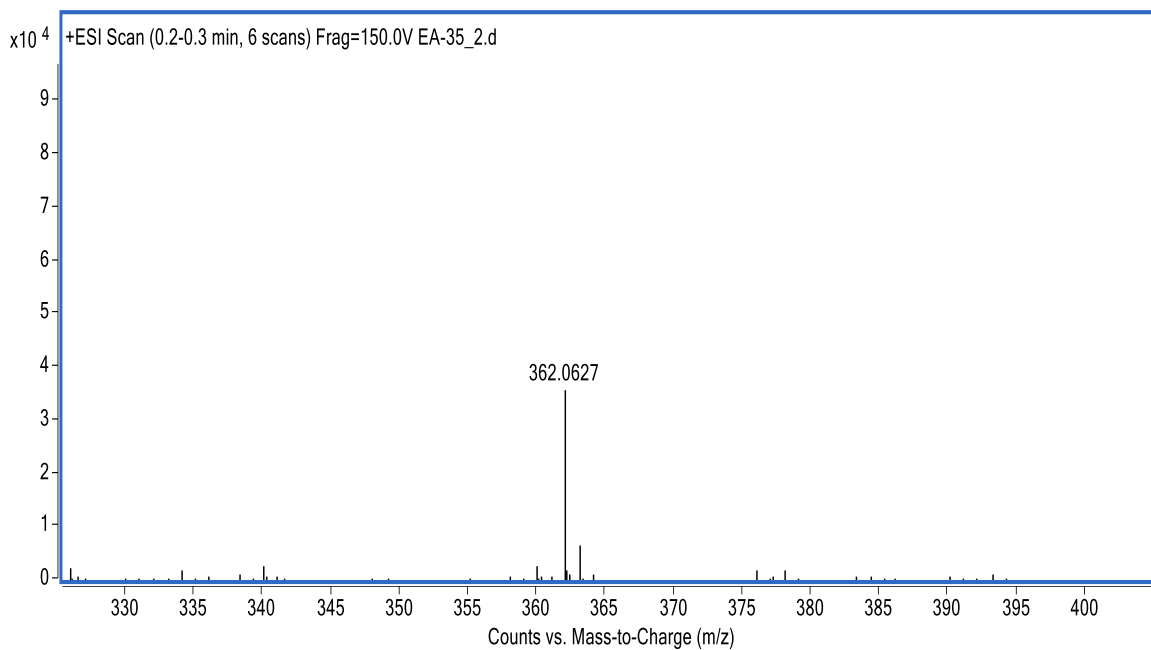


Figure S1: HR-ESI-MS (Positive mode) spectrum of compound **1**

Formula (M)	Ion Formula	m/z	Calc m/z	Diff (ppm)
C ₁₈ H ₁₃ N O ₆	C ₁₈ H ₁₃ N Na O ₆	362.0627	362.0635	2.38

EA-35_170410195221 #181-198 RT: 5.06-5.27 AV: 18 NL: 4.46E3
T: ITMS + c ESI Full ms [55.00-2000.00]

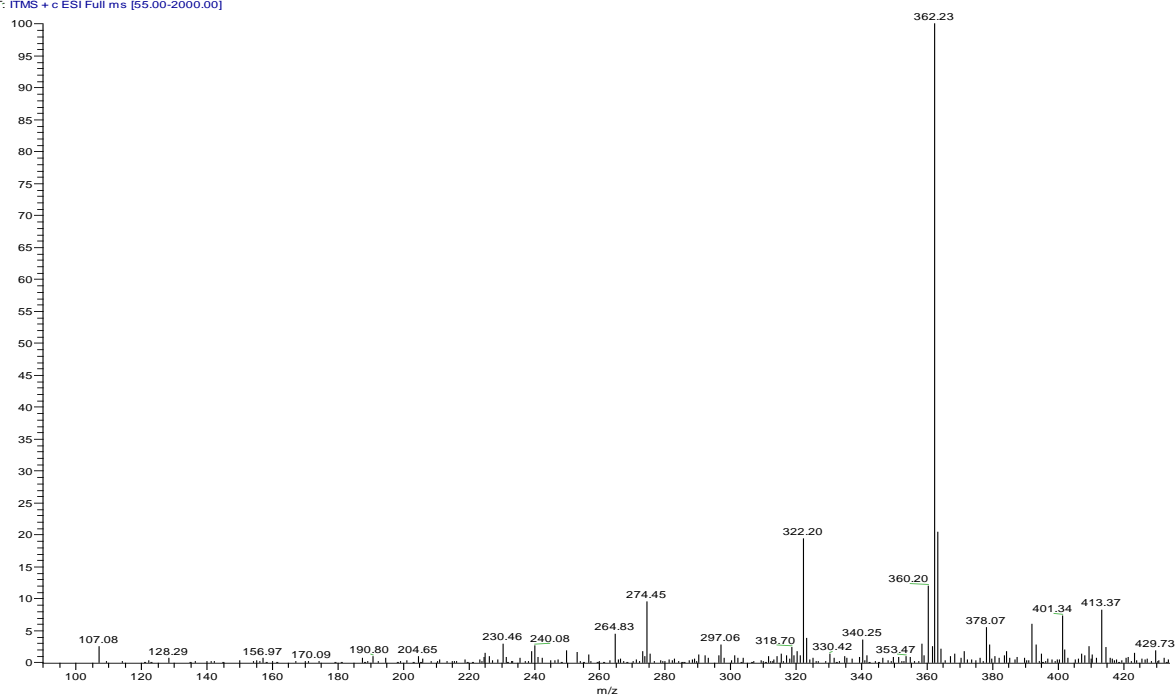


Figure S2: ESI-MS (Positive mode) spectrum of compound **1** ($362 [M+Na]^+$)

EA-35_170410195221 #18-29 RT: 0.25-0.42 AV: 12 NL: 2.58E3
T: ITMS - c ESI Full ms [65.00-2000.00]

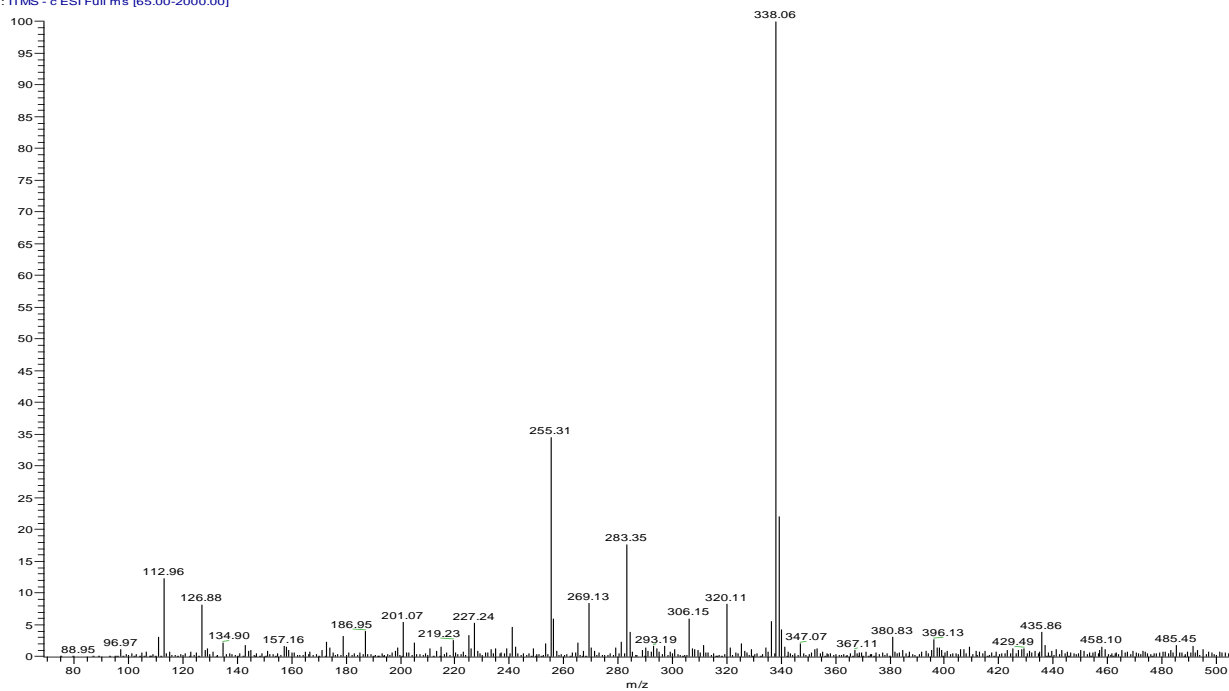


Figure S3: ESI-MS (Negative mode) of compound **1** ($338 [M-H]^-$)

EA-35_170410195221 #61-63 RT: 0.92-0.98 AV: 3 NL: 4.83E3
T: ITMS - c ESI Full ms2 338.00@cid20.00 [90.00-2000.00]

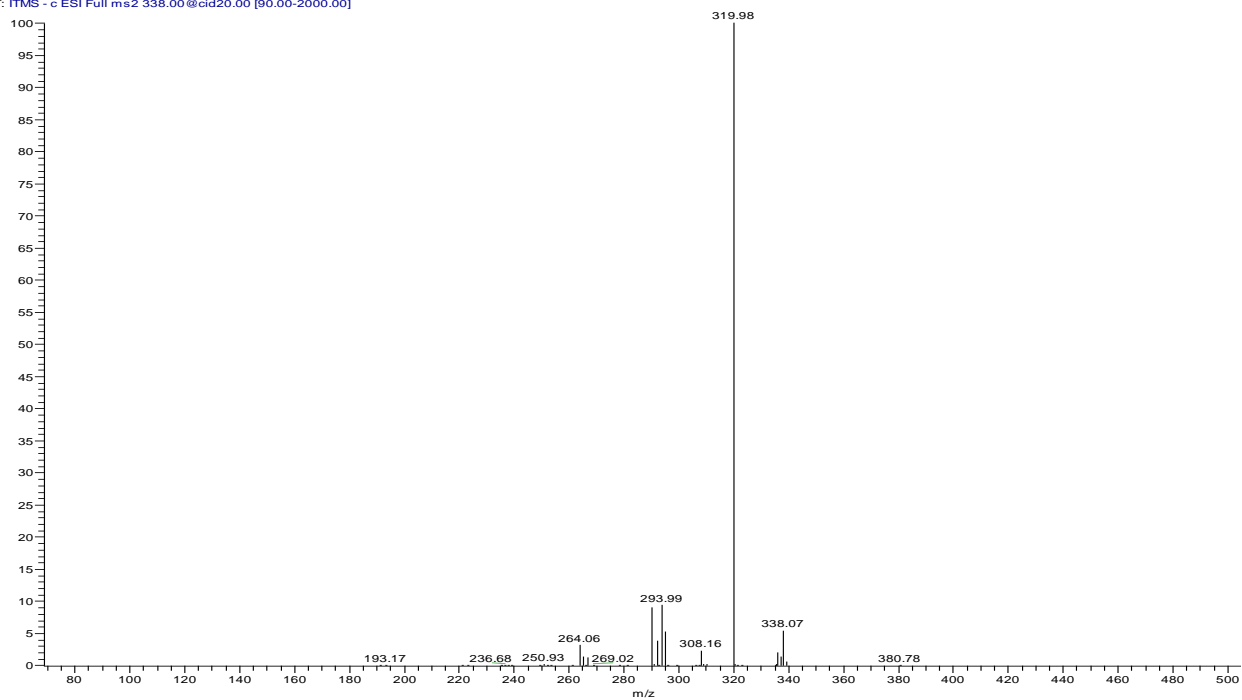


Figure S4: ESI-MS² (Negative mode) of compound **1**

EA-35_170410195221 #74-75 RT: 1.34-1.37 AV: 2 NL: 1.16E3
T: ITMS - c ESI Full ms3 338.00@cid20.00 320.00@cid25.00 [85.00-2000.00]

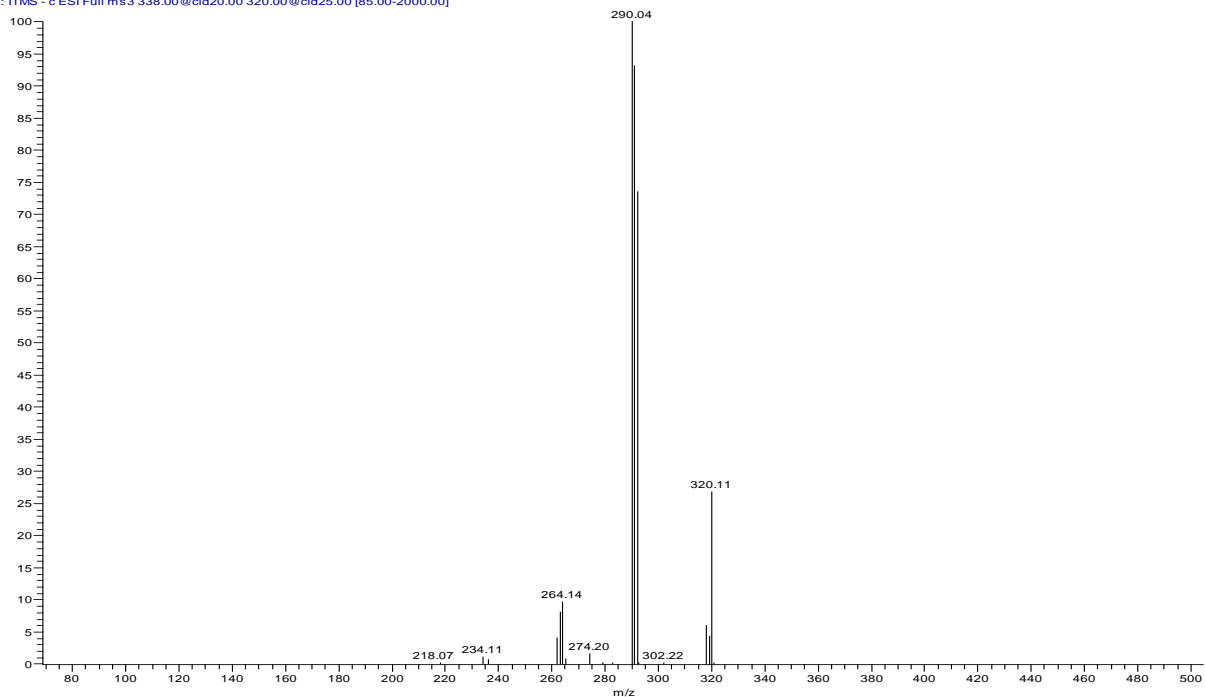


Figure S5: ESI-MS³ (Negative mode) of compound 1

EA-35_170410195221 #83-85 RT: 1.66-1.74 AV: 3 NL: 8.17E2
T: ITMS - c ESI Full ms4 338.00@cid20.00 320.00@cid25.00 290.00@cid25.00 [75.00-2000.00]

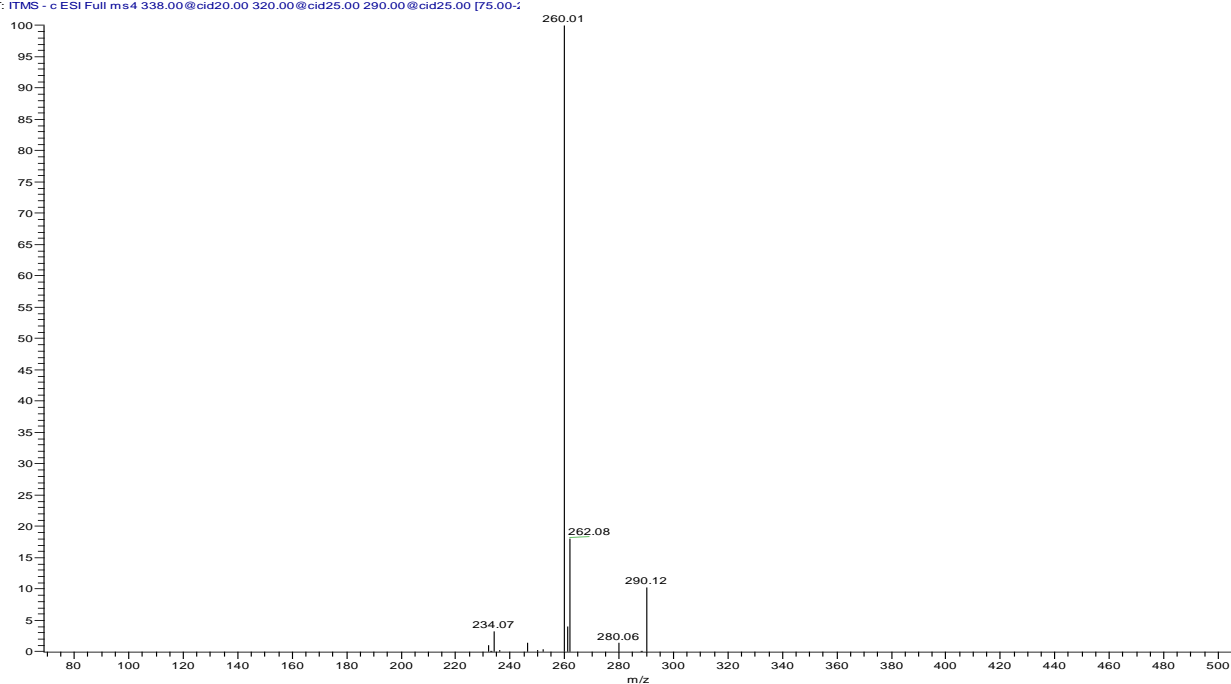


Figure S6: ESI-MS⁴ (Negative mode) of compound 1

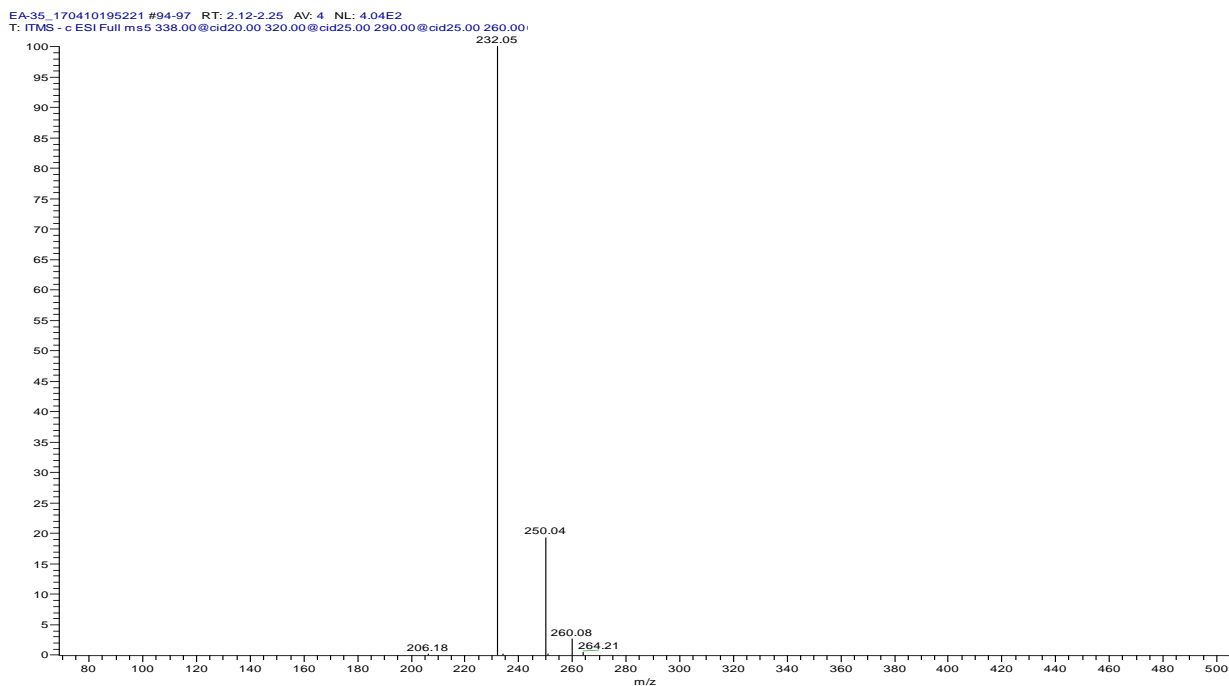


Figure S7: ESI-MS⁵ (Negative mode) of compound **1**

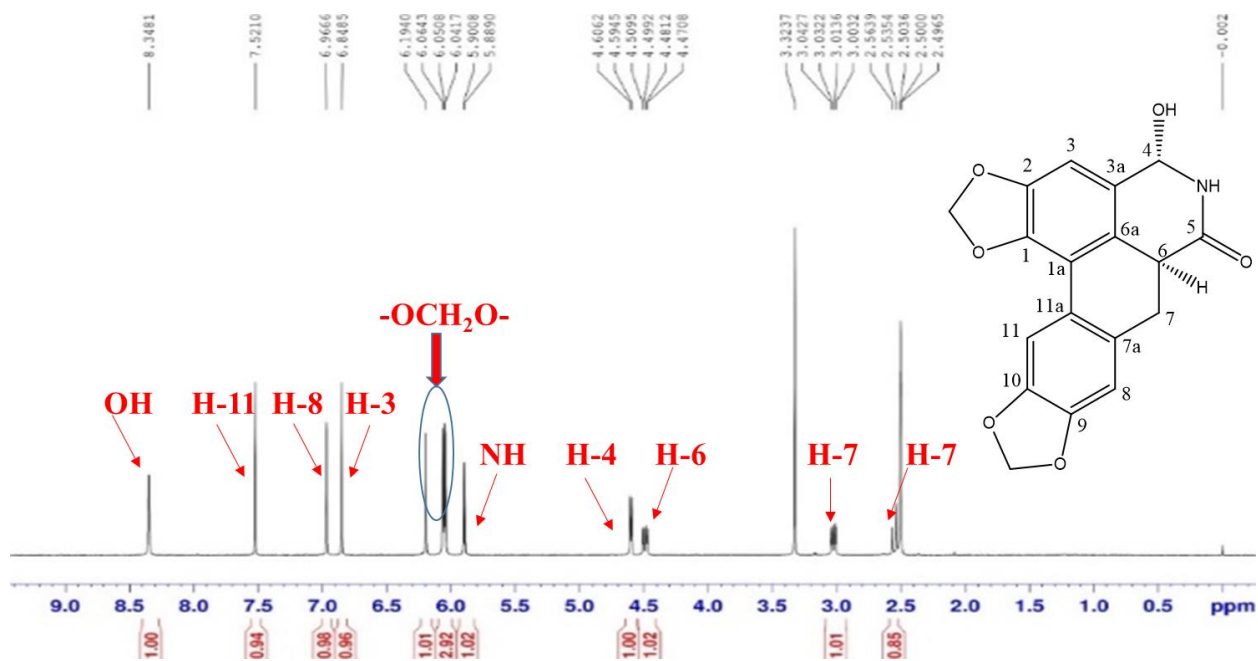


Figure S8: ¹H-NMR spectrum in DMSO-*d*₆ of compound **1**

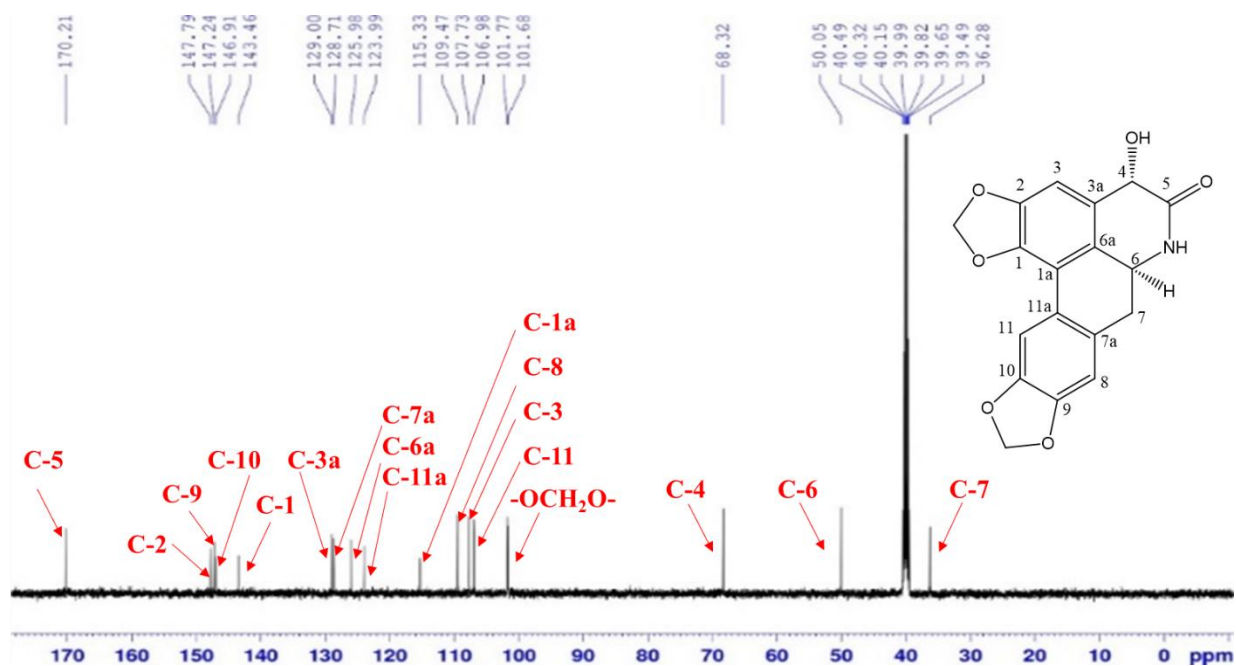


Figure S9: ^{13}C -NMR spectrum in $\text{DMSO-}d_6$ of compound **1**

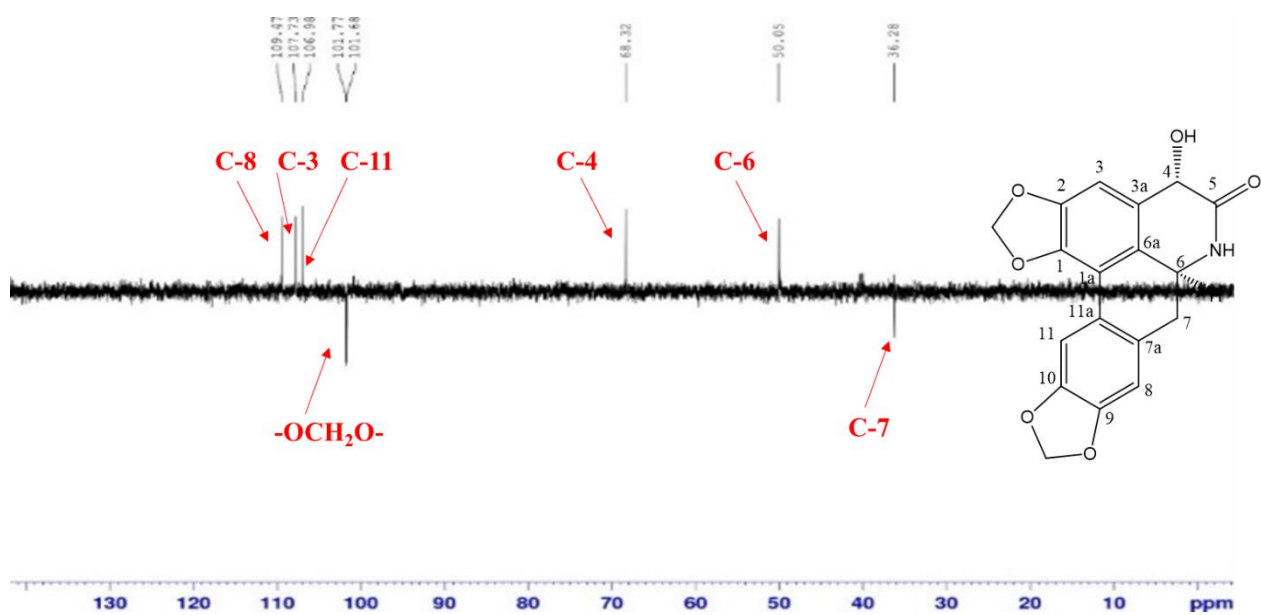


Figure S10: DEPT 135 spectrum of compound **1**

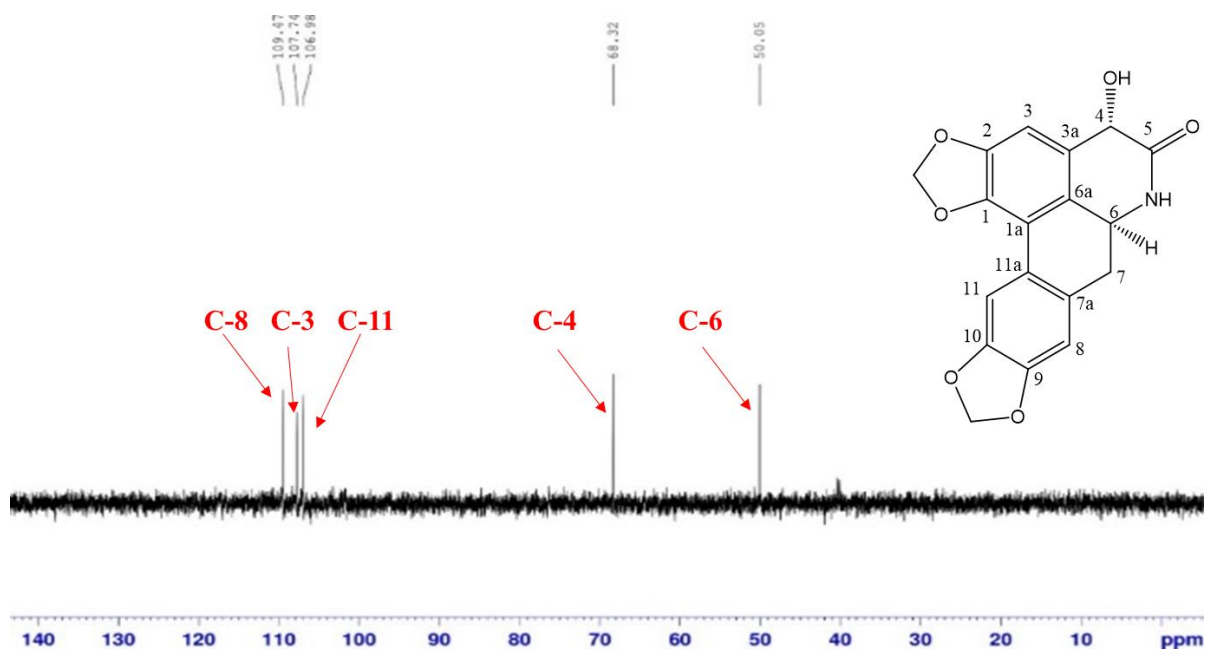


Figure S11: DEPT 90 spectrum of compound 1

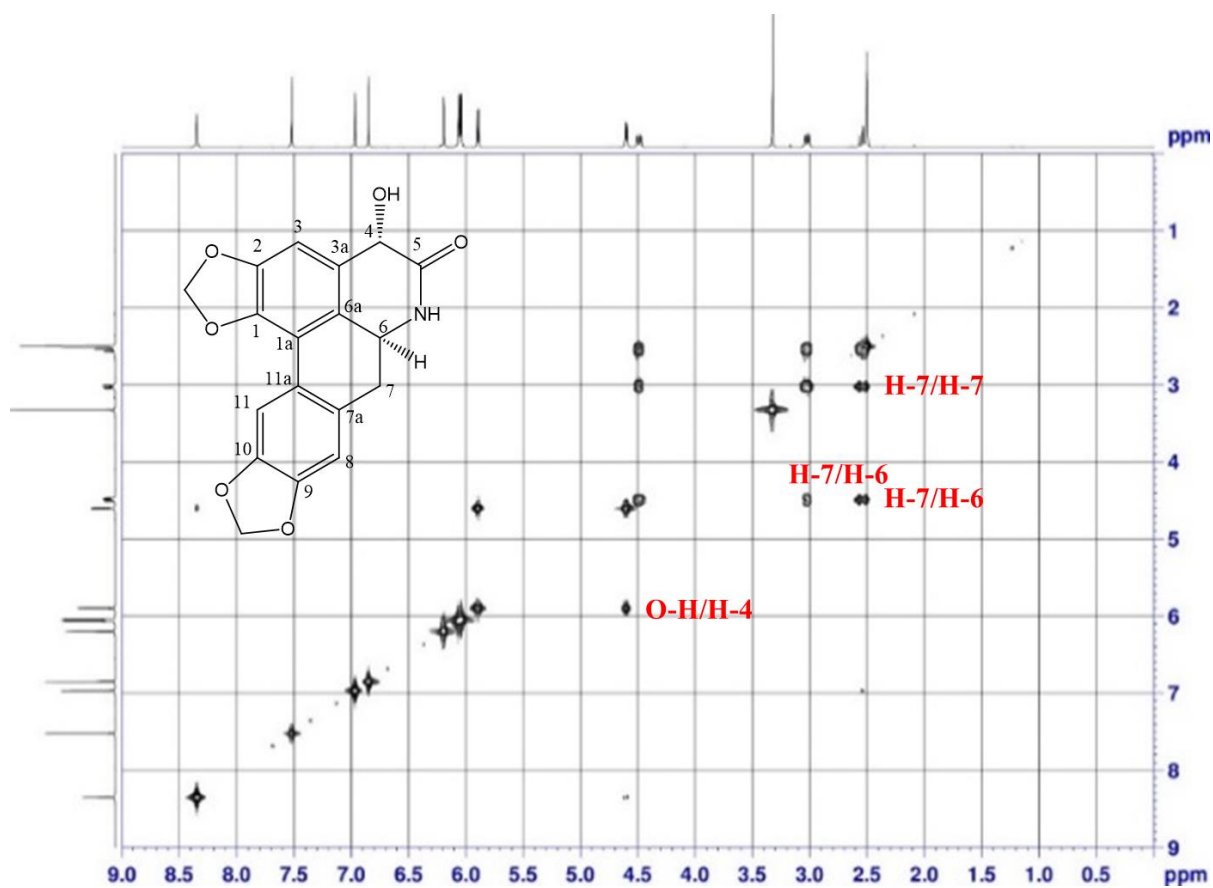


Figure S12: ^1H - ^1H COSY spectrum of compound 1

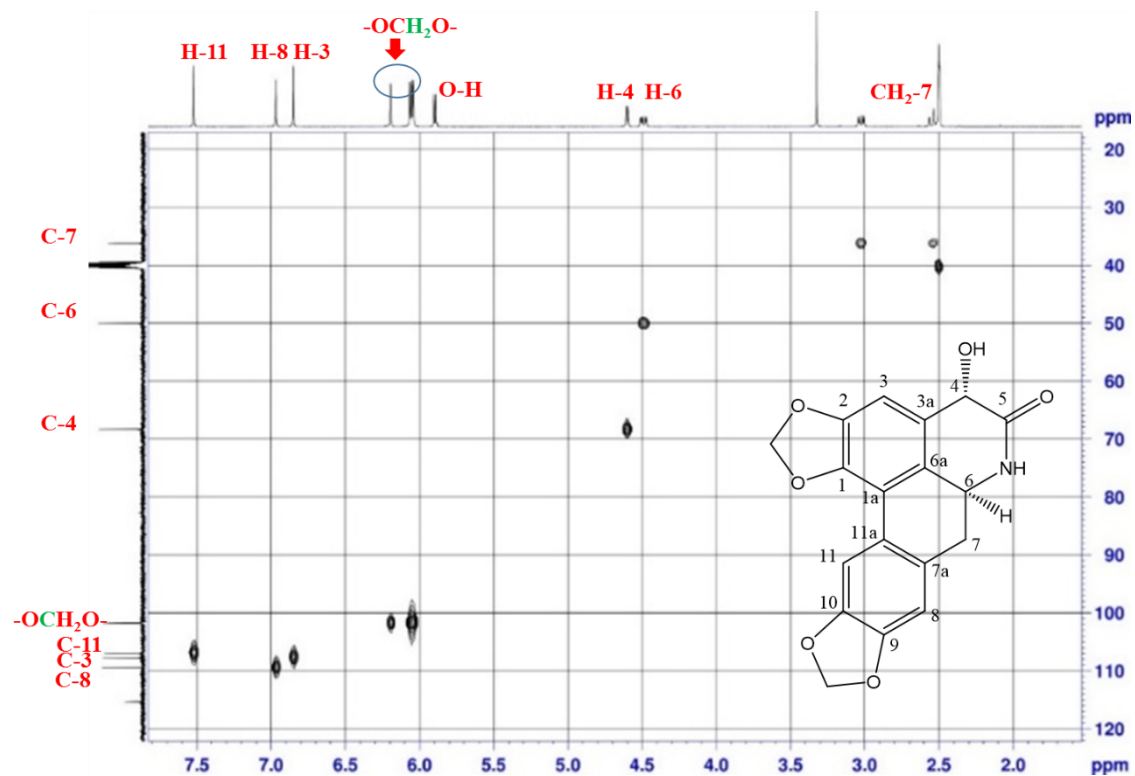


Figure S13: HSQC spectrum of compound 1

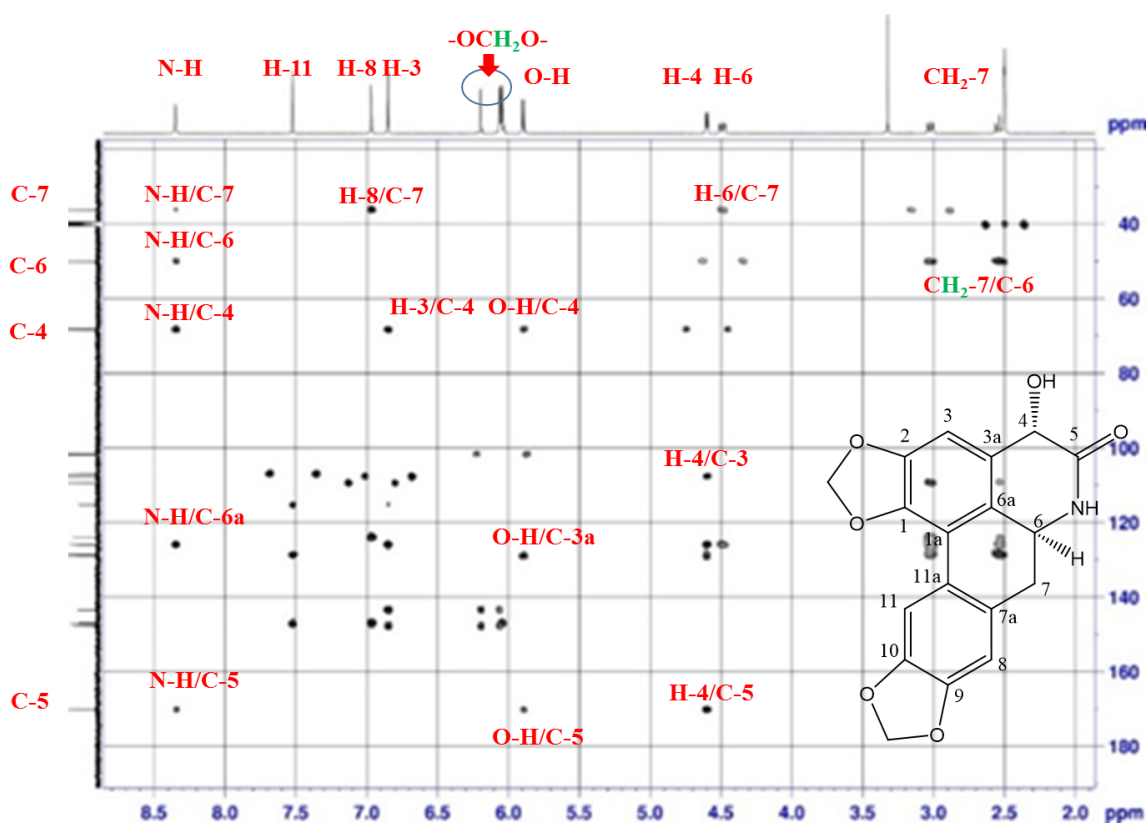


Figure S14: HMBC spectrum of compound 1

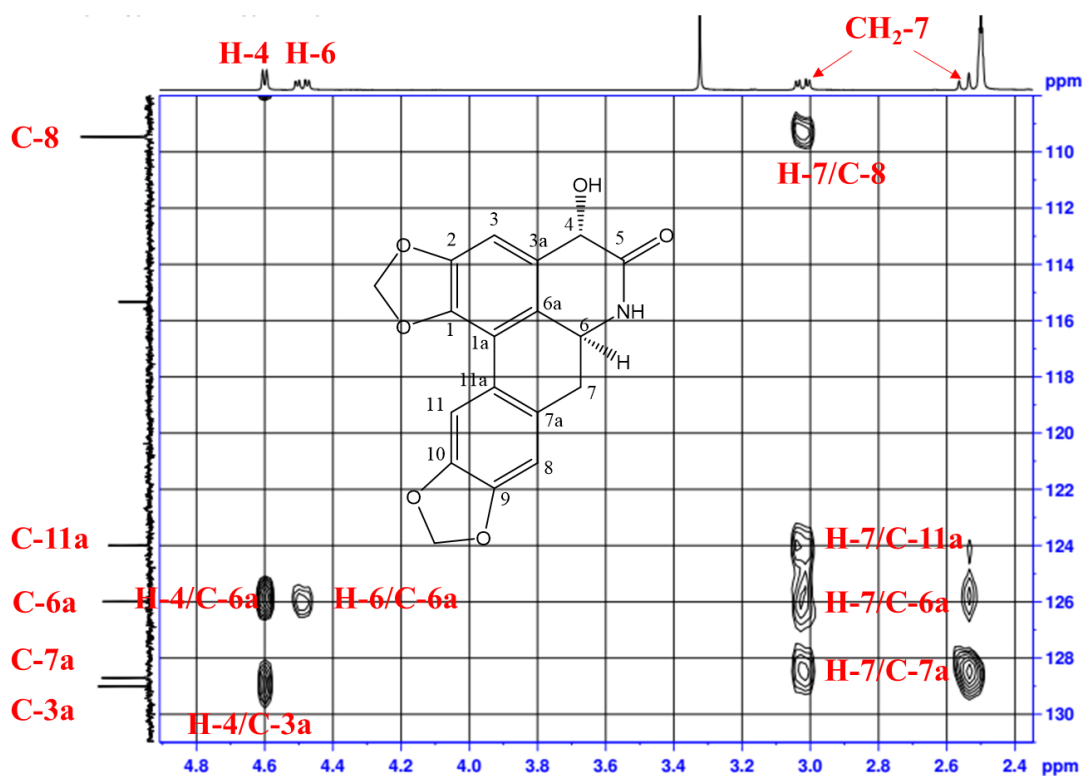


Figure S15: HMBC spectrum of compound 1 (Part 1)

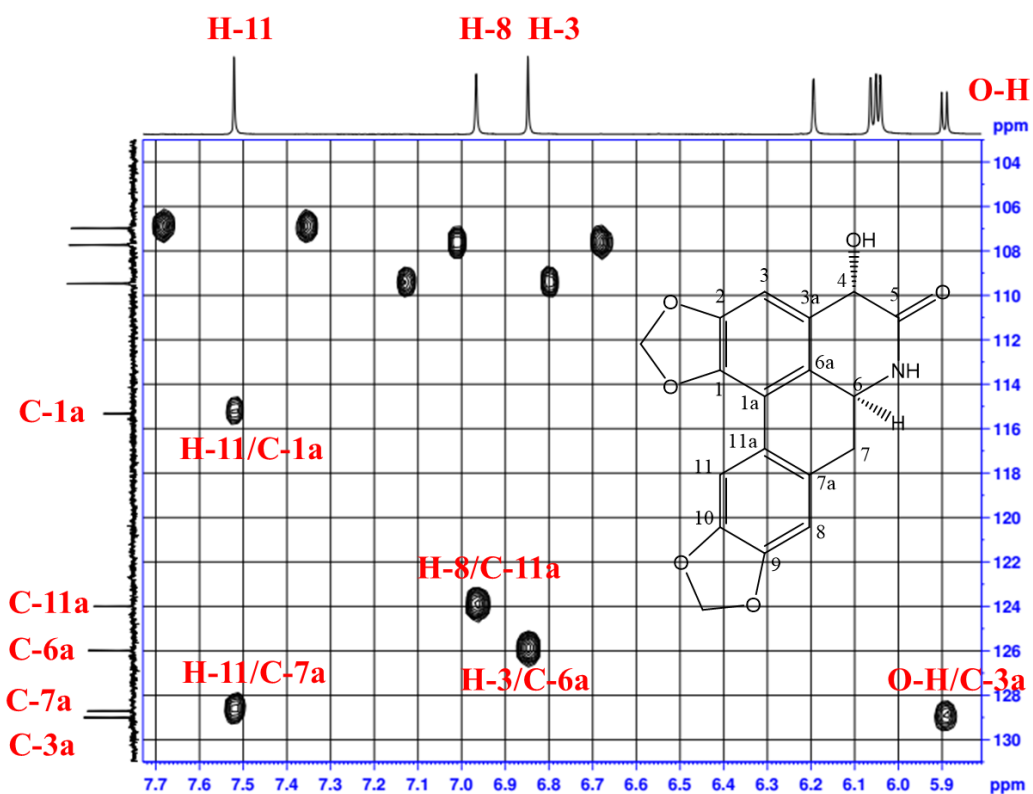


Figure S16: HMBC spectrum of compound 1 (Part 2)

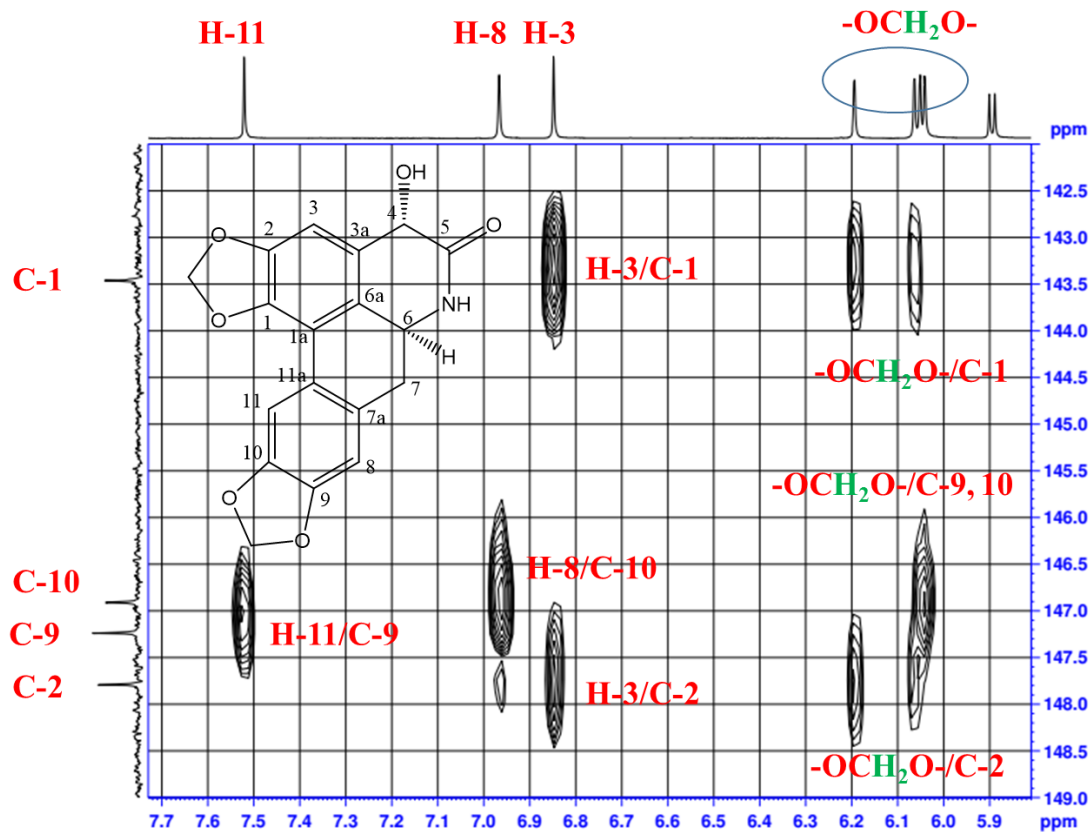


Figure S17: HMBC spectrum of compound **1** (Part 3)

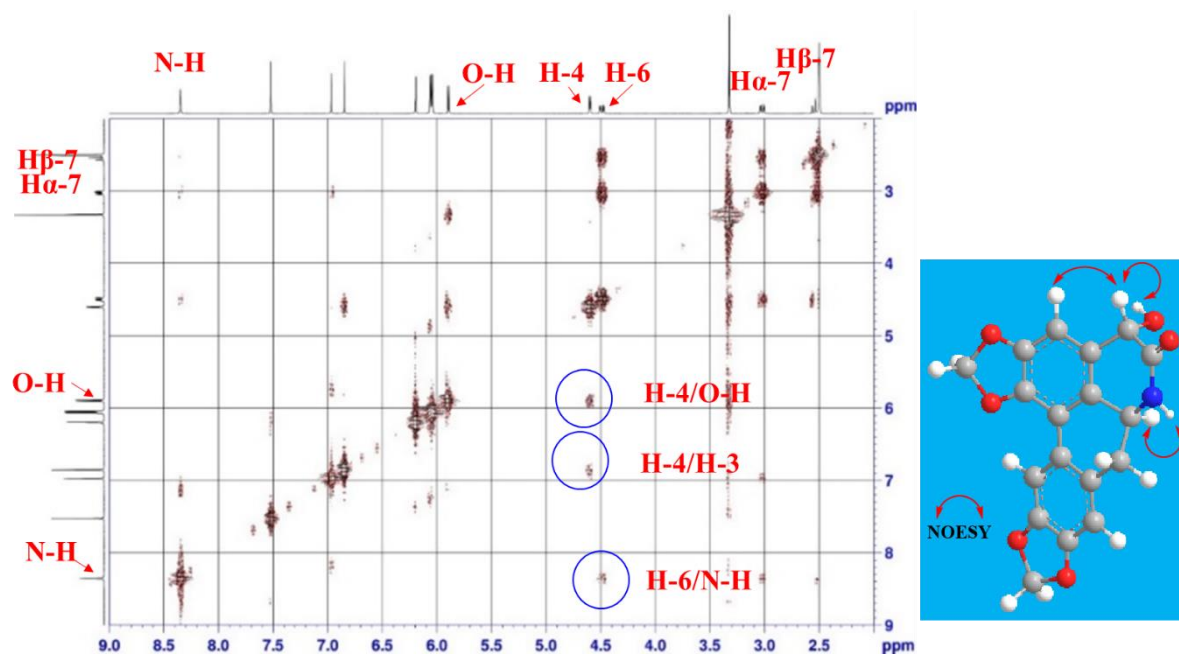


Figure S18: NOESY spectrum of compound **1**

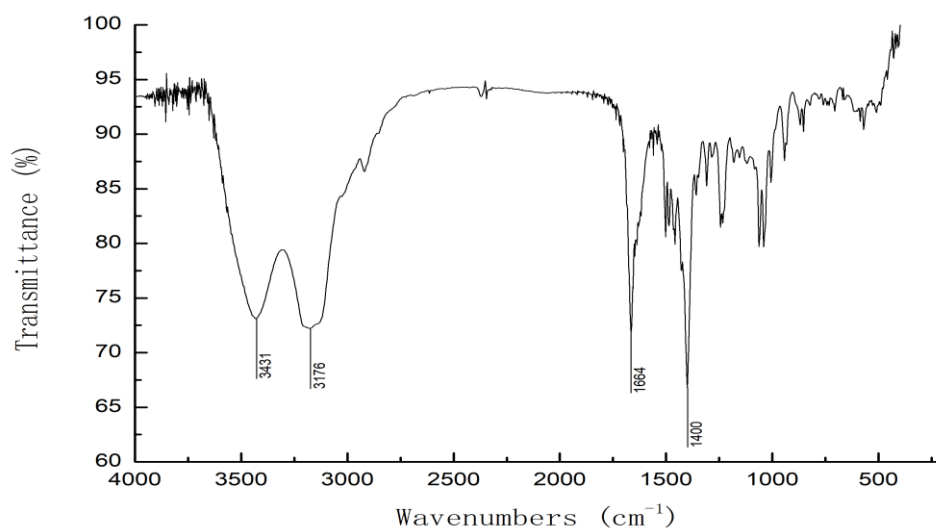


Figure S19: IR spectrum of compound **1**

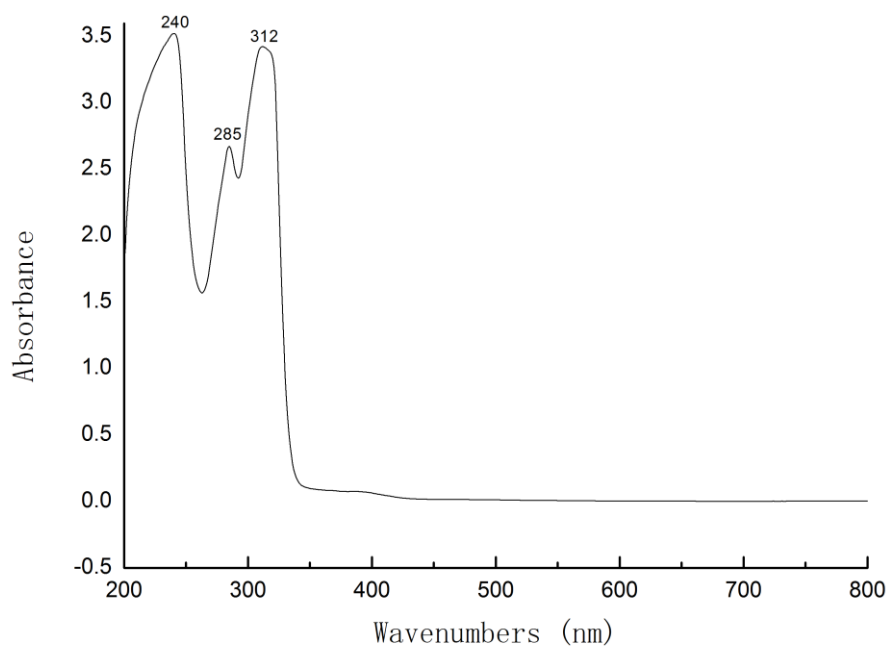


Figure S20: UV spectrum of compound **1**