

Supporting Information

Org. Commun. 13:3 (2020) 127-137

Investigation of sensor characteristics of Au and Cu modified PEDOT electrodes for dopamine

Sema Topal, Zeynep Sena Kulaksiz, Sebahat Topal, Eda Karaman,

Belkis Ustamehmetoglu and Esma Sezer *

Department of Chemistry, Istanbul Technical University, Maslak, Istanbul, 34469, Türkiye

Table of Contents	Page
Figure S1: SEM images of Pt/PEDOT	2
Figure S2: SEM images of Pt/PEDOT/Cu	3
Figure S3: SEM images of Pt/PEDOT/Au	4

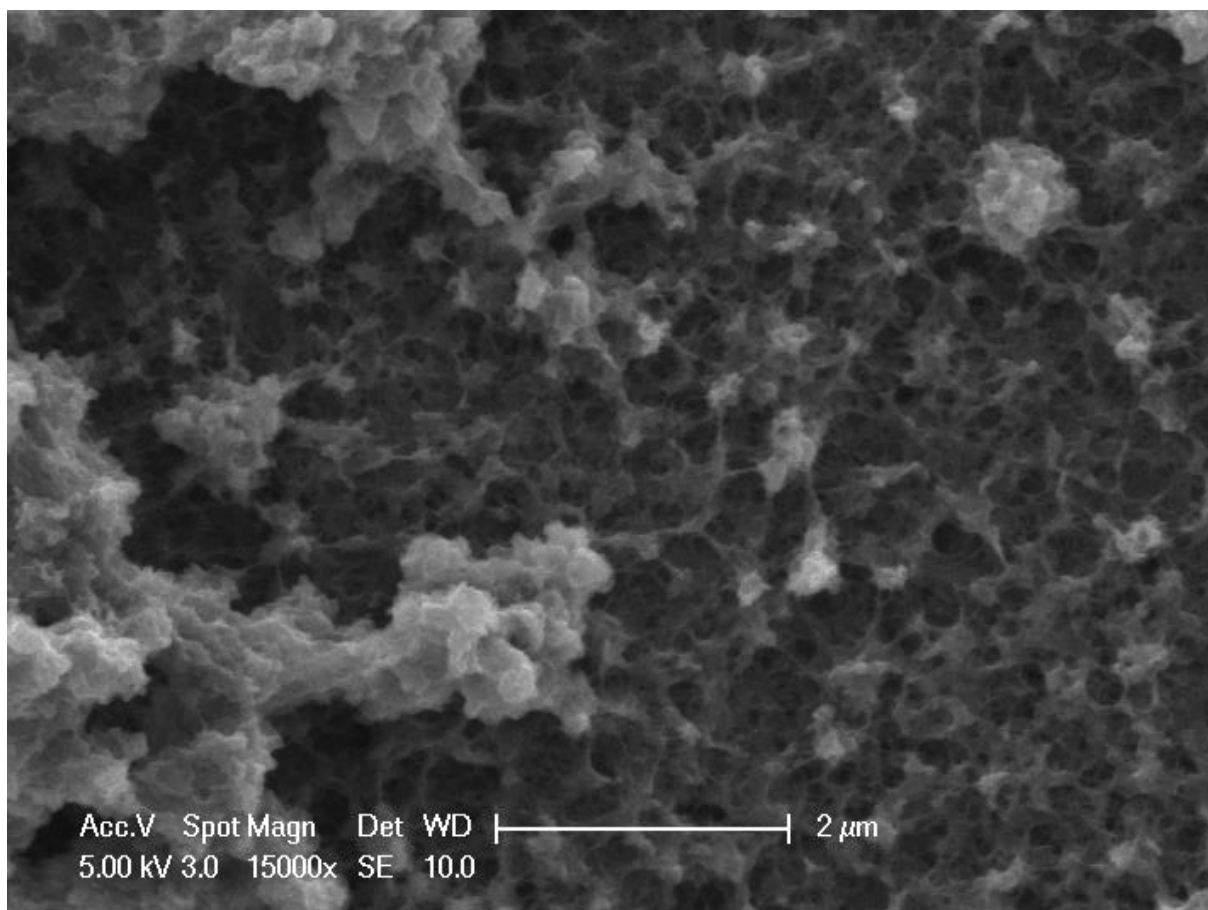


Figure S1: SEM images of Pt/PEDOT

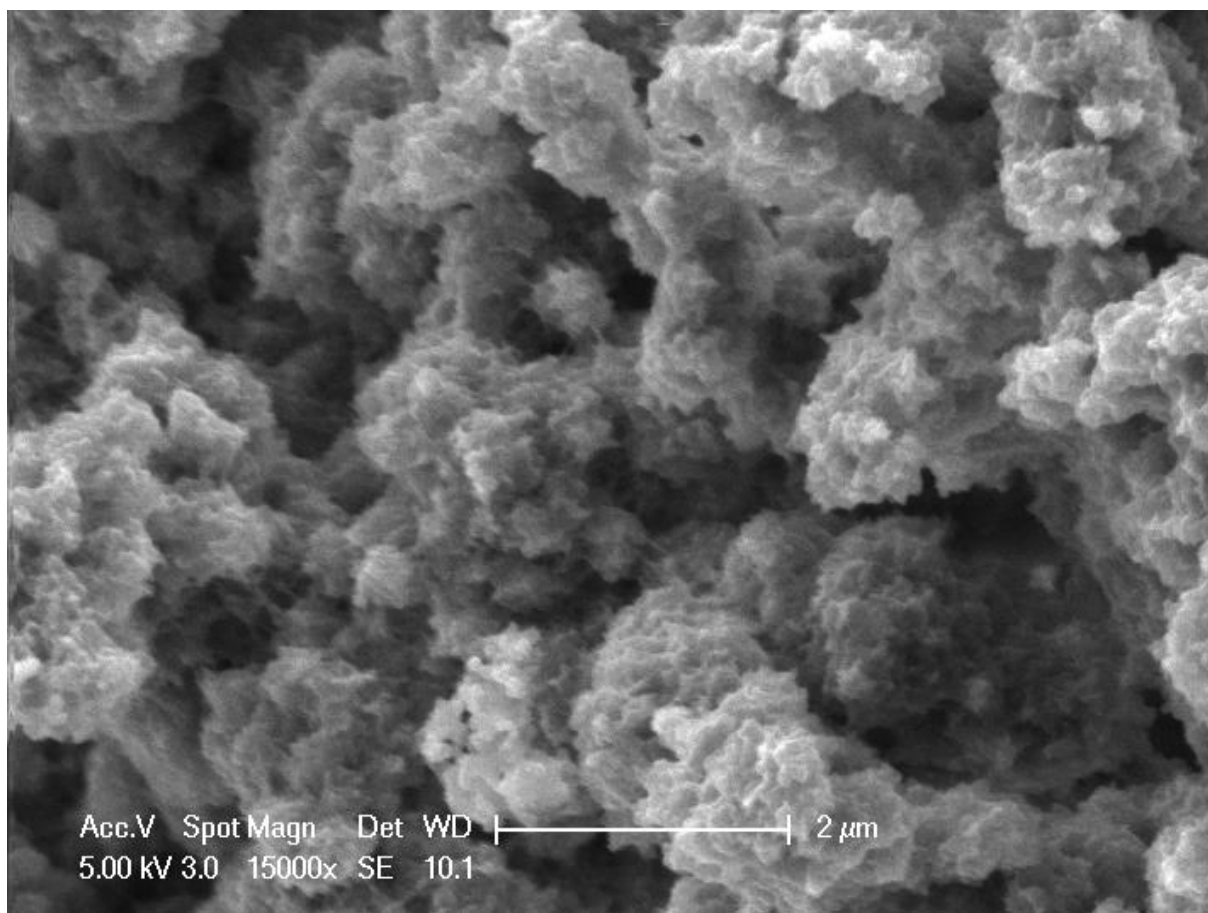


Figure S2: SEM images of Pt/PEDOT /Cu

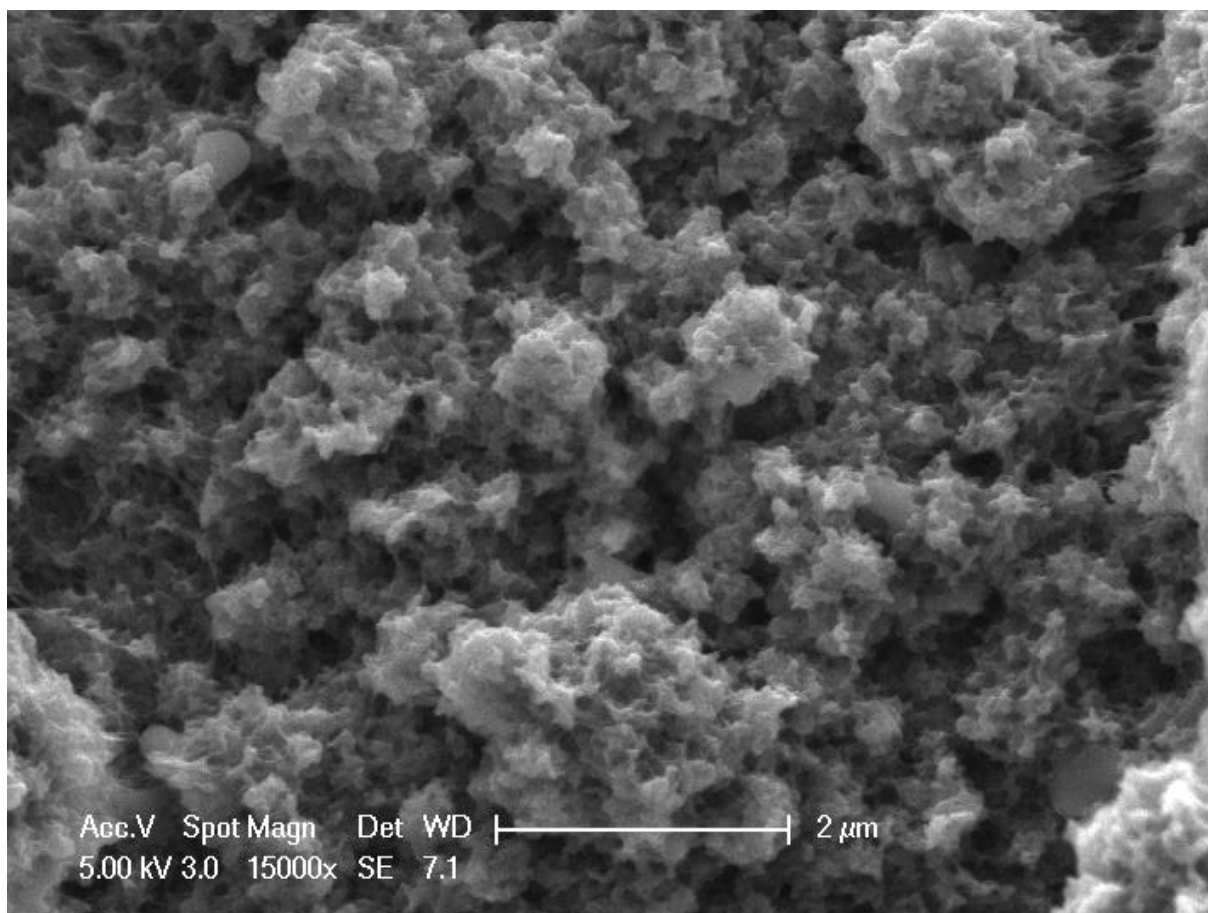


Figure S3: SEM images of Pt/PEDOT/Au