

Supporting Information

Rec. Nat. Prod. 17:4 (2023) 721-725

Trichonafurin A: a New γ -Lactone Compound from the Marine-Derived Fungus *Trichoderma atroviride* ZW-7

Lu-Di Zhai, Wei Gao, Li-Ting Liu, Ke Zhang*, and De-Liang Zhang*

Qingdao Hospital of Traditional Chinese Medicine (Qingdao Hiser Hospital), Qingdao 266033, China

Table of Contents	Page
Figure S1: HR-ESI-MS spectrum of 1	2
Figure S2: ¹ H-NMR (500 MHz, CDCl ₃) spectrum of 1	3
Figure S3: Enlarged ¹ H-NMR (500 MHz, CDCl ₃) spectrum of 1	4
Figure S4: ¹³ C-NMR and DEPT (125 MHz, CDCl ₃) spectra of 1	5
Figure S5: HSQC spectrum of 1	6
Figure S6: Enlarged HSQC spectrum of 1	7
Figure S7: Enlarged HSQC spectrum of 1	8
Figure S8: HMBC spectrum of 1	9
Figure S9: Enlarged HMBC spectrum of 1	10
Figure S10: Enlarged HMBC spectrum of 1	11
Figure S11: Enlarged HMBC spectrum of 1	12
Figure S12: ¹ H- ¹ H COSY spectrum of 1	13
Figure S13: Enlarged ¹ H- ¹ H COSY spectrum of 1	14
Figure S14: Enlarged ¹ H- ¹ H COSY spectrum of 1	15
Figure S15: NOESY spectrum of 1	16
Figure S16: Enlarged NOESY spectrum of 1	17
Figure S17: SciFinder search results of 1	18

*Corresponding author: E-mail: zhangke15806587107@163.com

**Corresponding author: E-mail: zdl18660266101@163.com

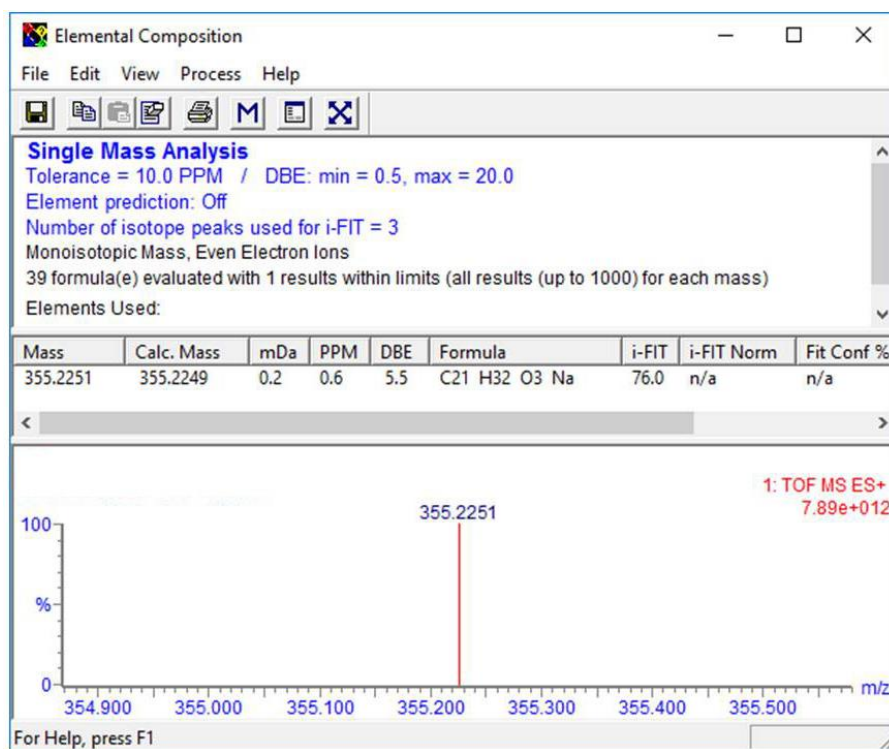


Figure S1: HR-ESI-MS spectrum of **1**

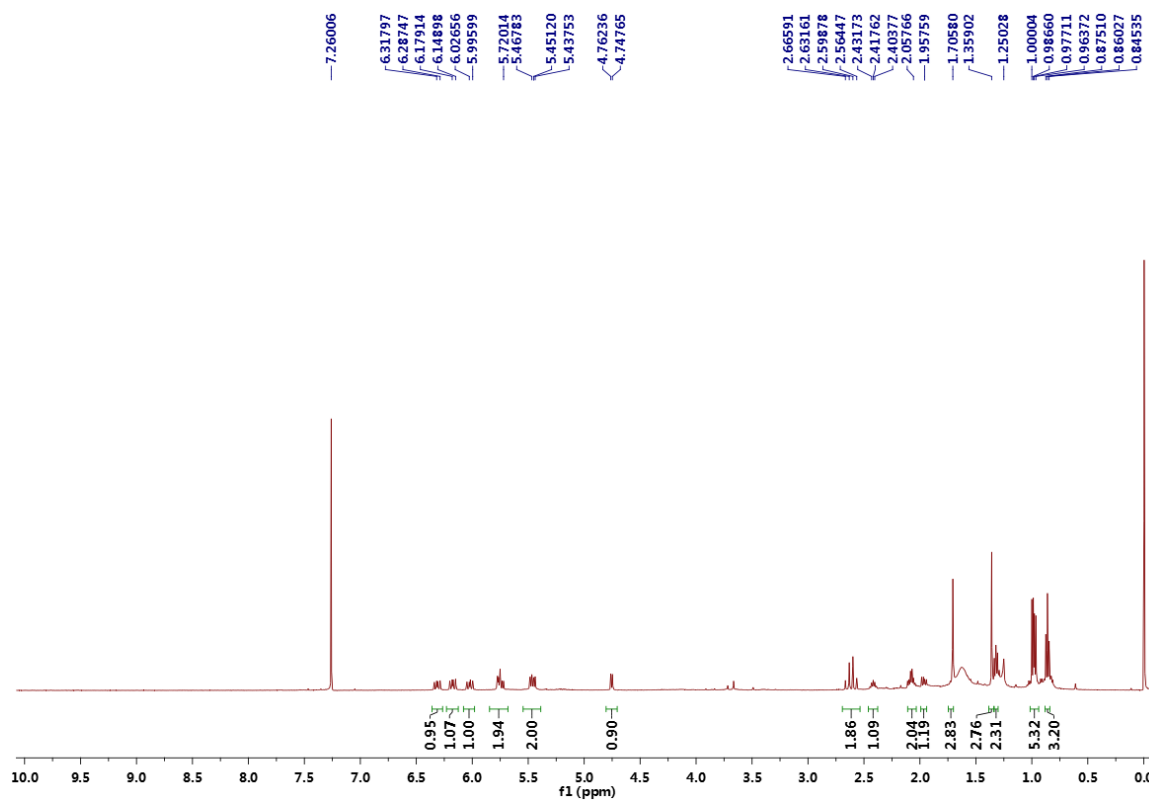


Figure S2: $^1\text{H-NMR}$ (500 MHz, CDCl_3) spectrum of **1**

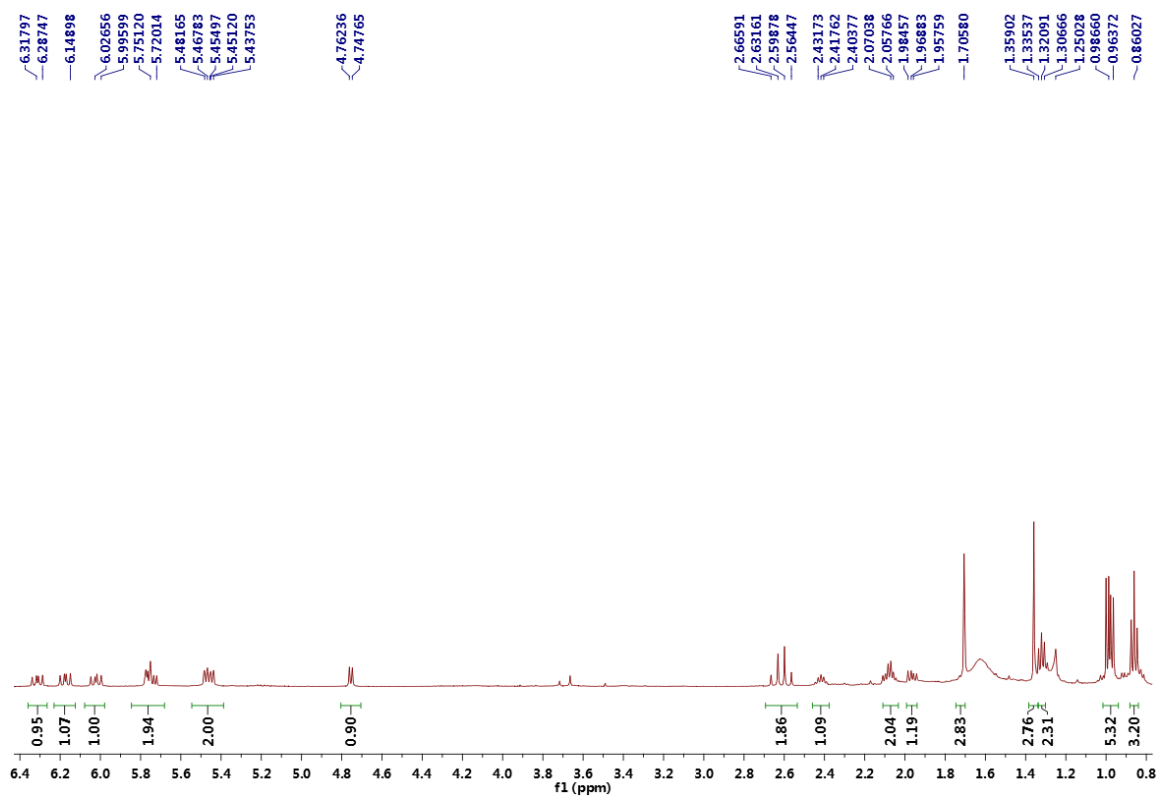


Figure S3: Enlarged $^1\text{H-NMR}$ (500 MHz, CDCl_3) spectrum of **1**

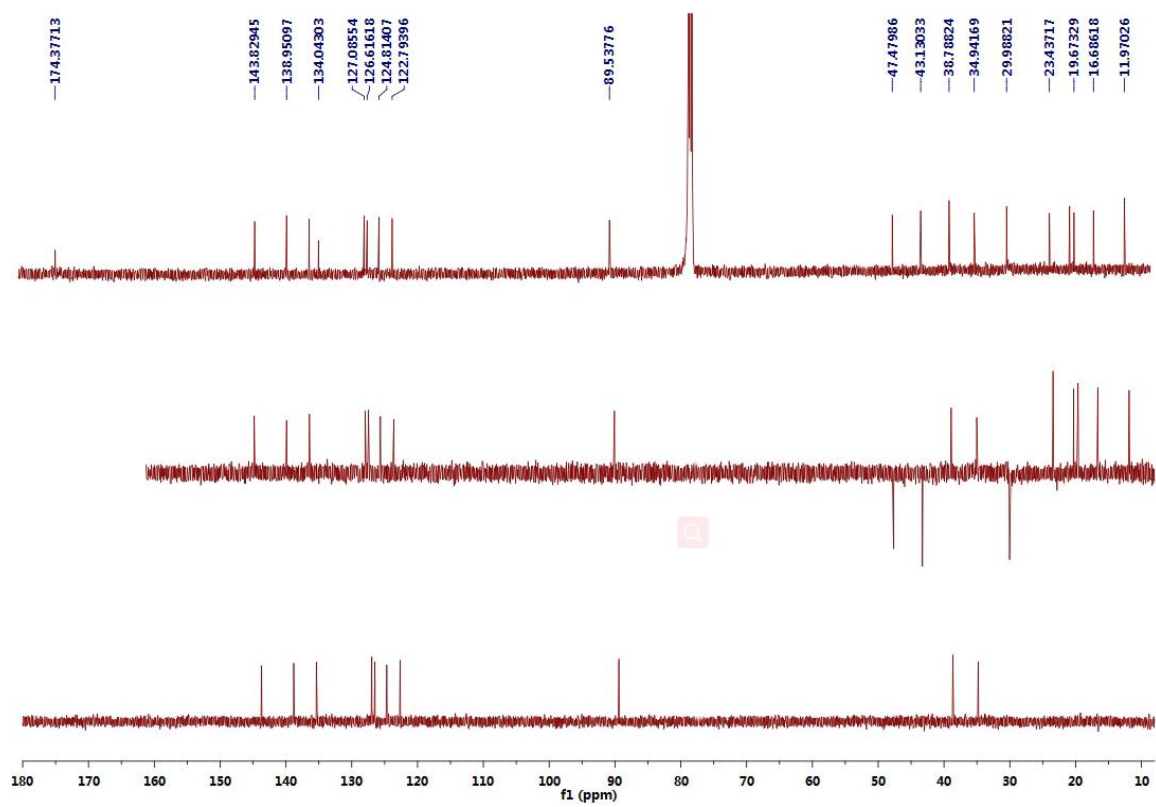


Figure S4: ^{13}C -NMR and DEPT (125 MHz, CDCl_3) spectra of **1**

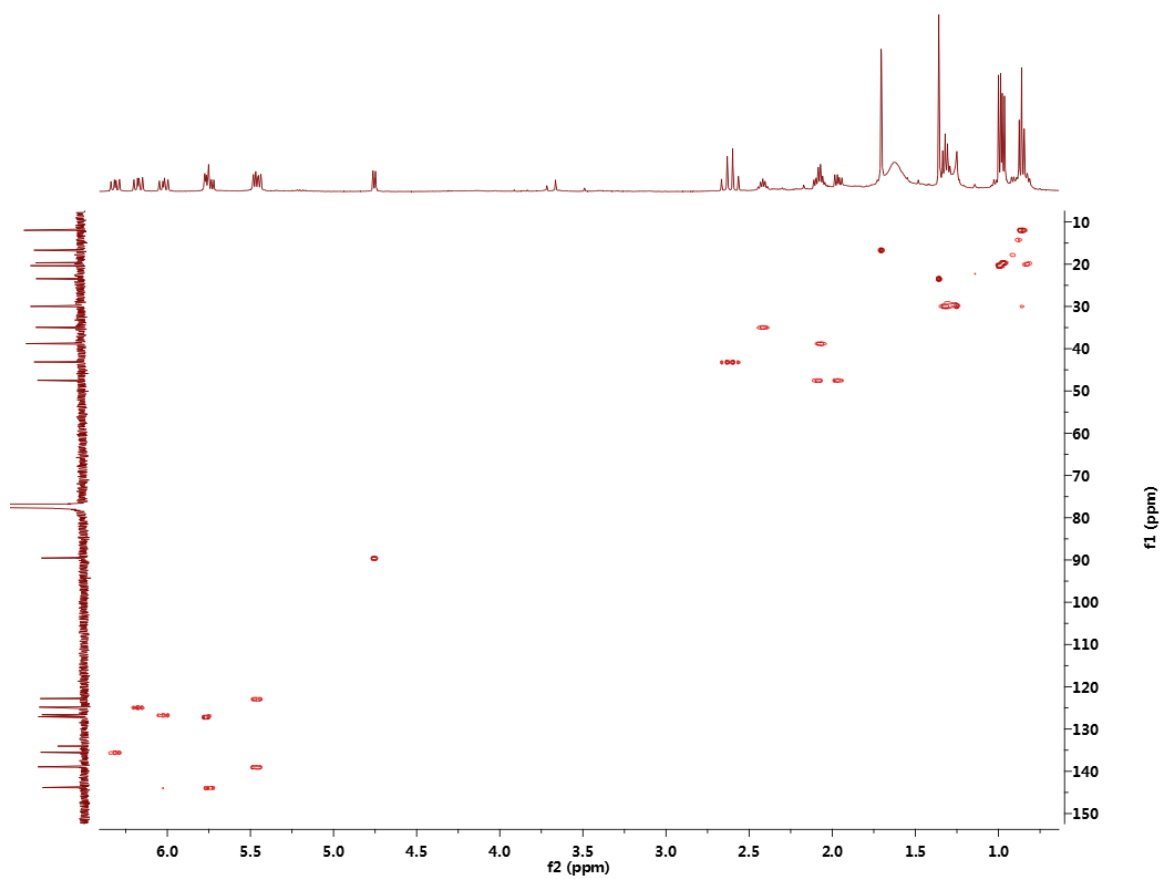


Figure S5: HSQC spectrum of **1**

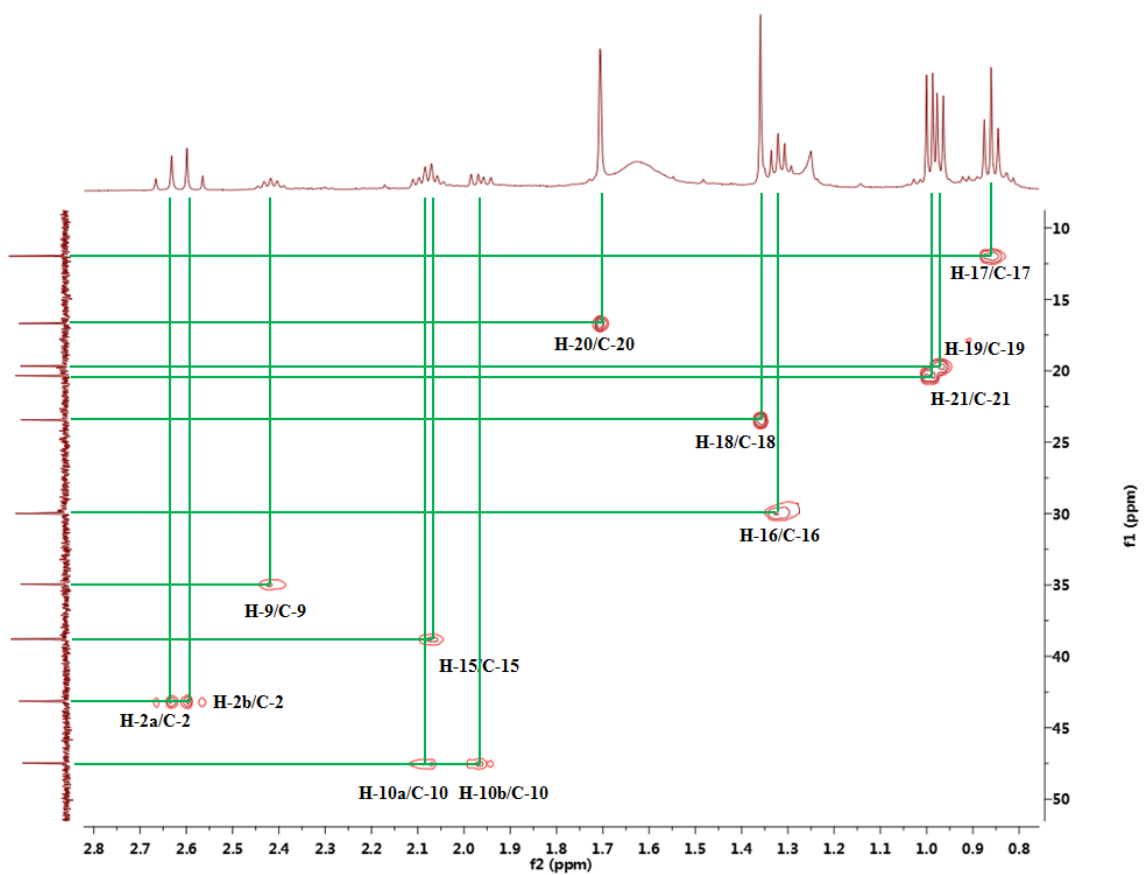


Figure S6: Enlarged HSQC spectrum of **1**

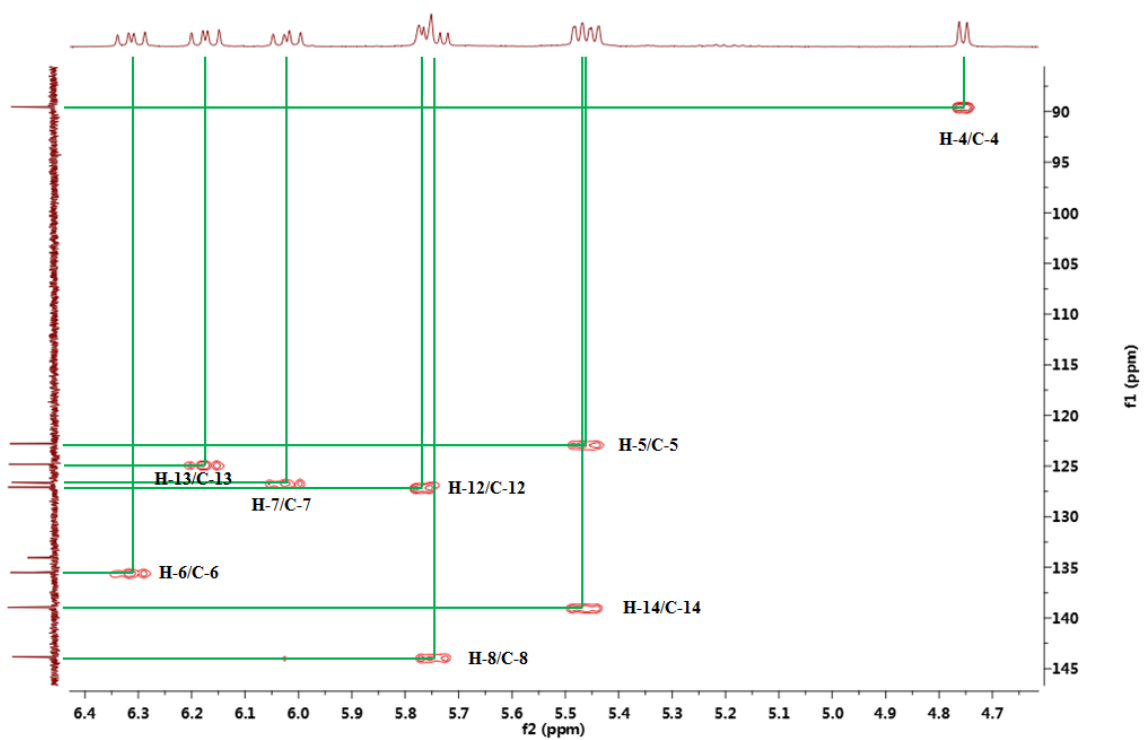


Figure S7: Enlarged HSQC spectrum of **1**

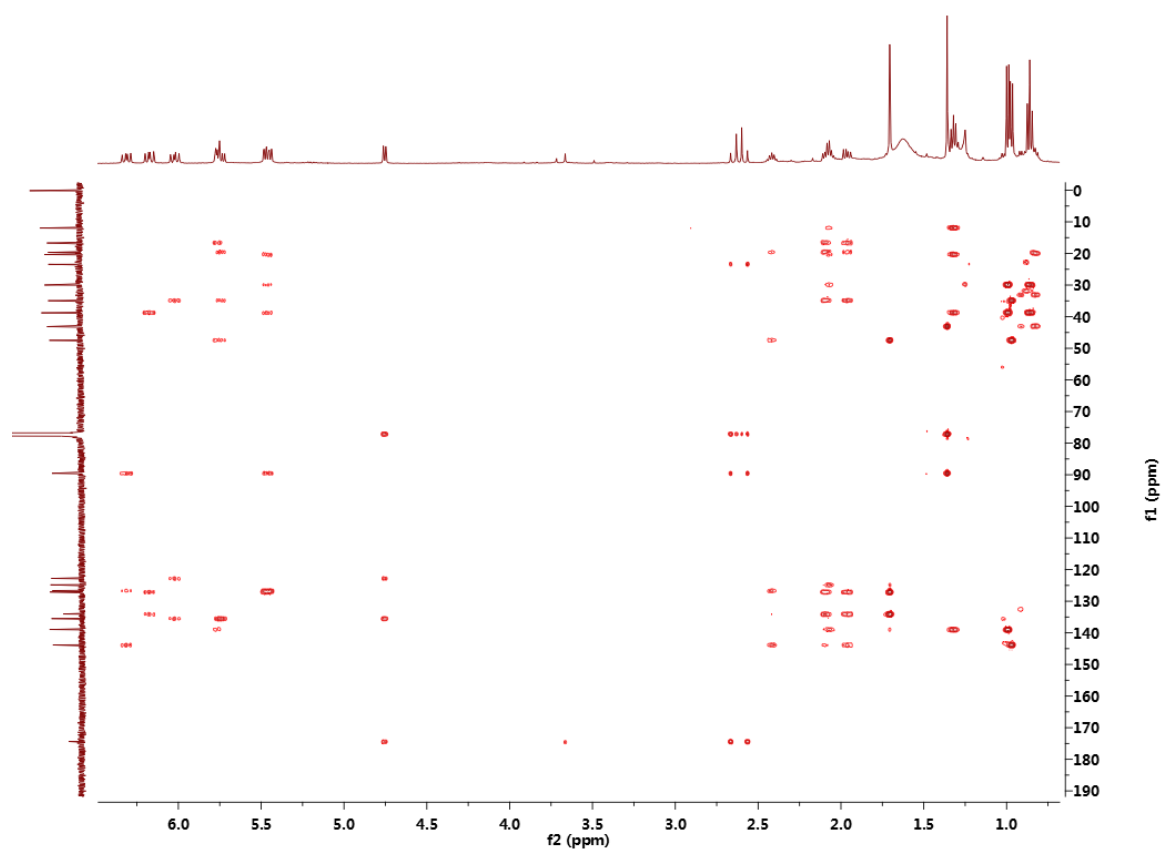


Figure S8: HMBC spectrum of **1**

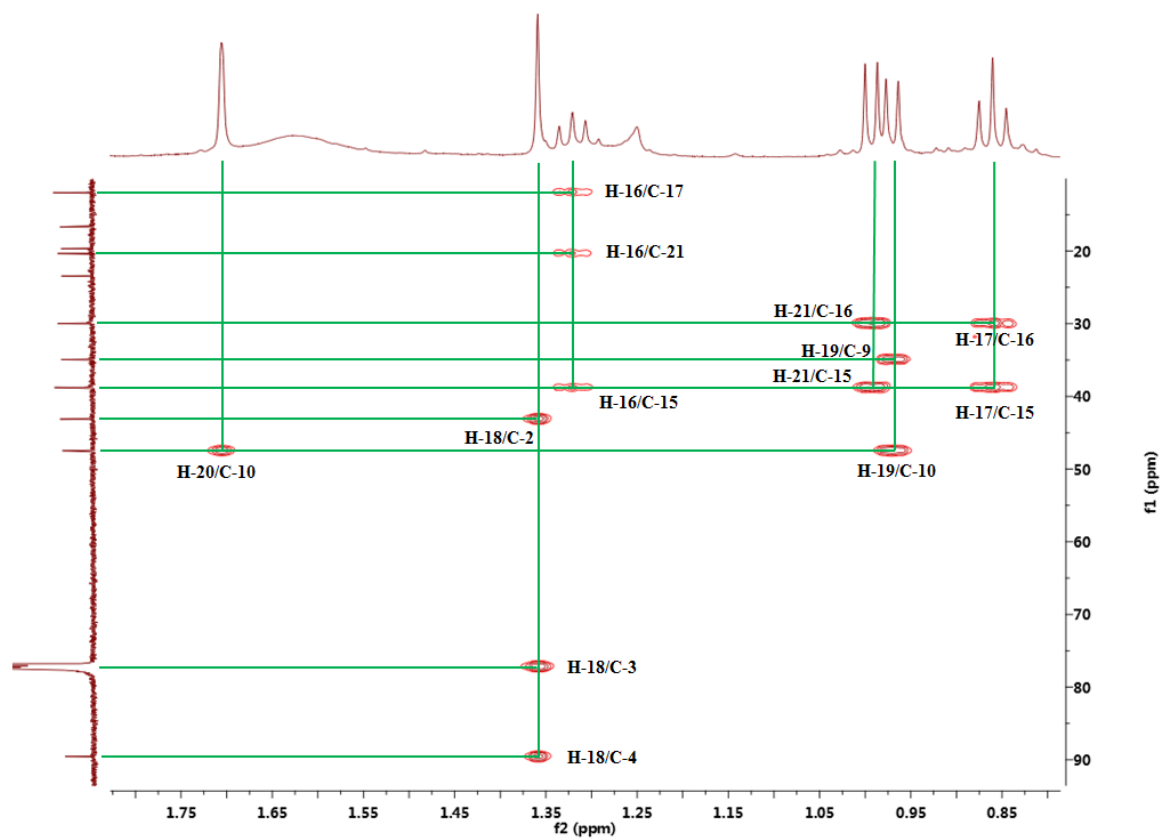


Figure S9: Enlarged HMBC spectrum of **1**

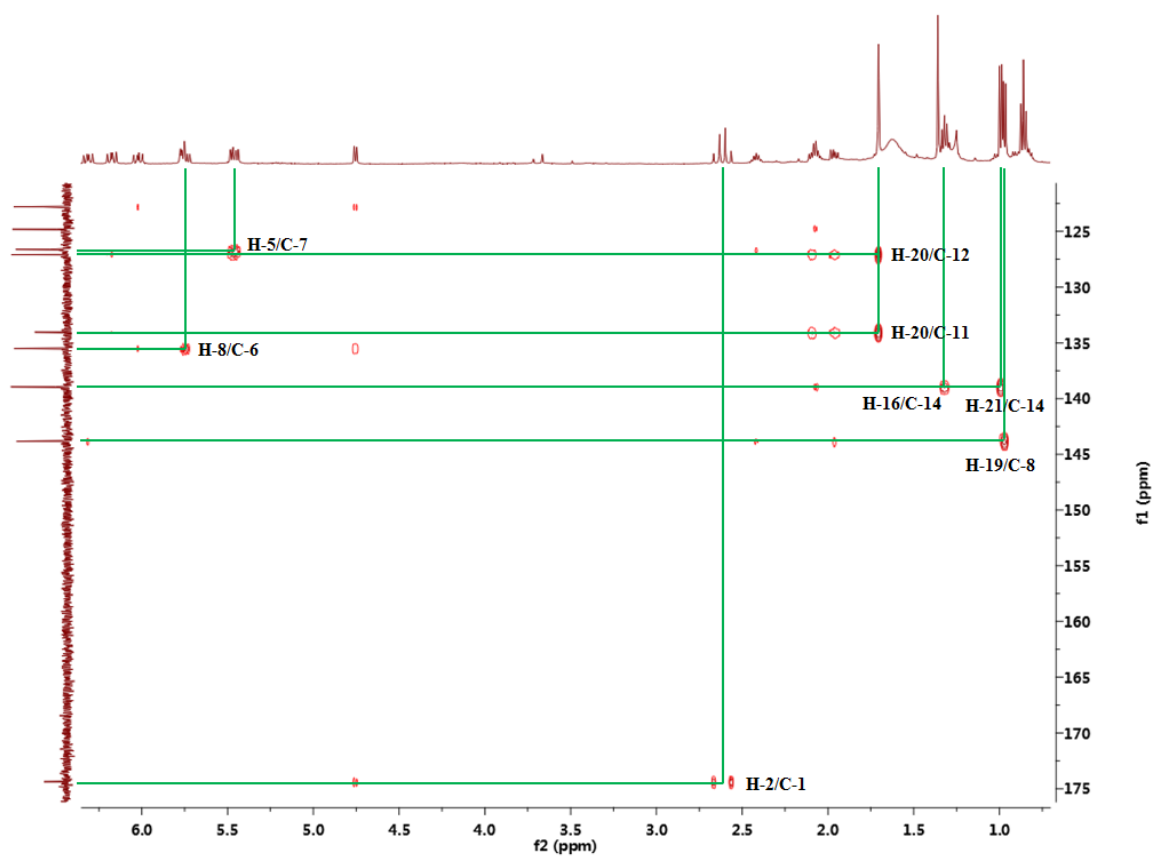


Figure S10: Enlarged HMBC spectrum of **1**

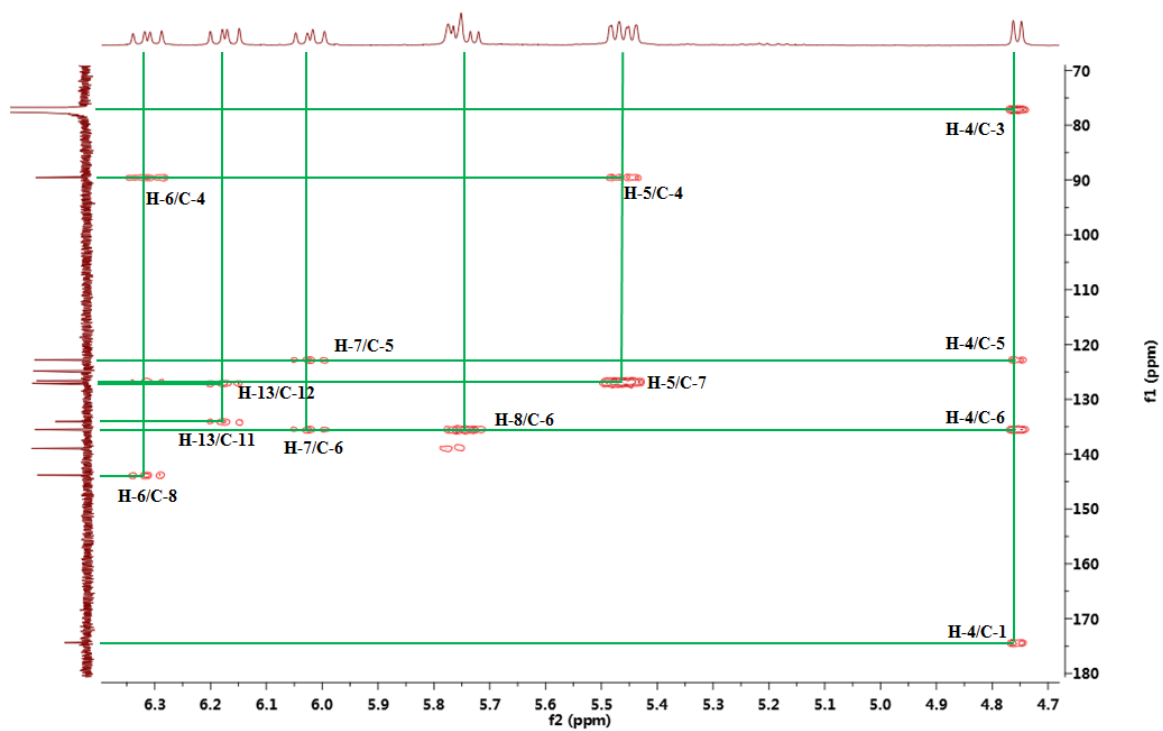


Figure S11: Enlarged HMBC spectrum of 1

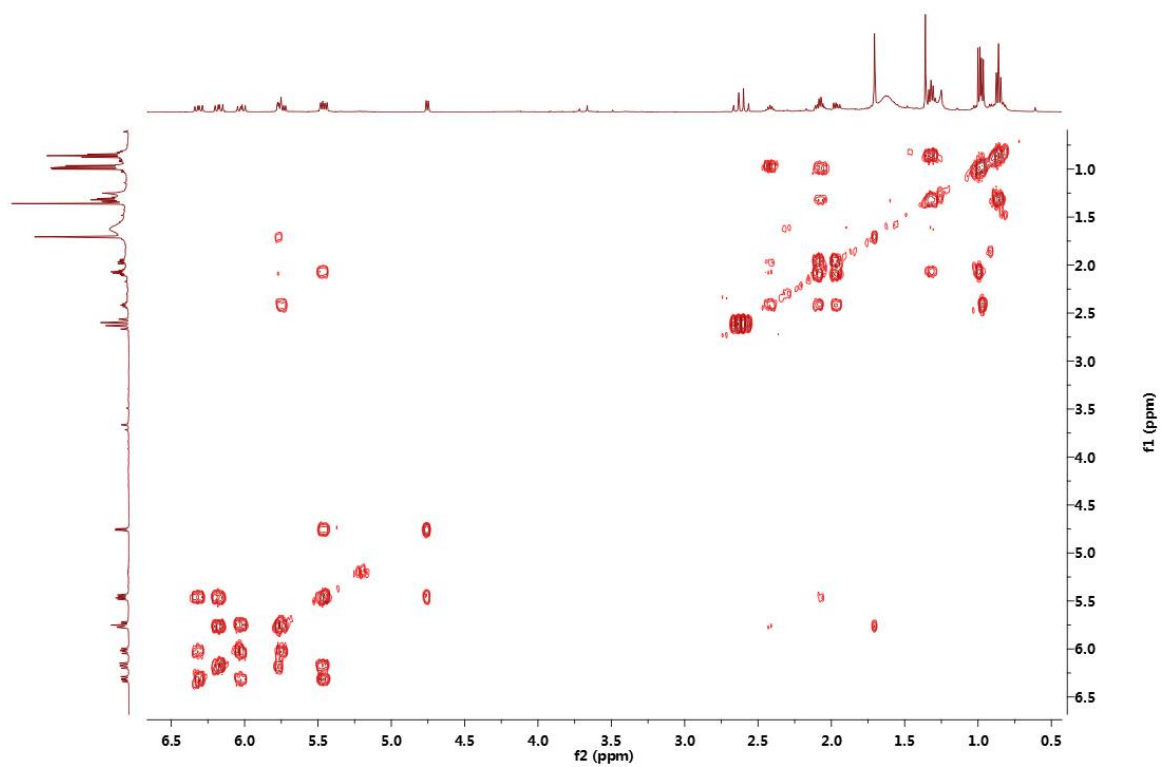


Figure S12: ^1H - ^1H COSY spectrum of **1**

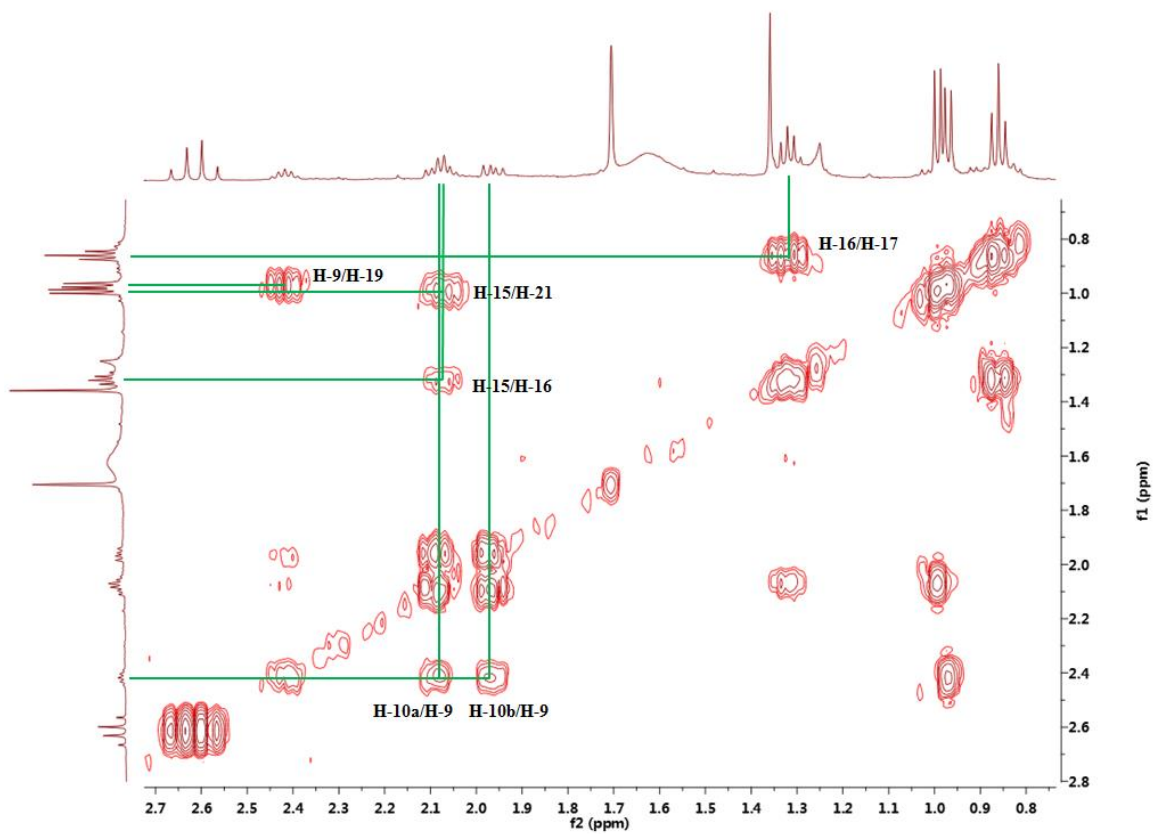


Figure S13: Enlarged ^1H - ^1H COSY spectrum of **1**

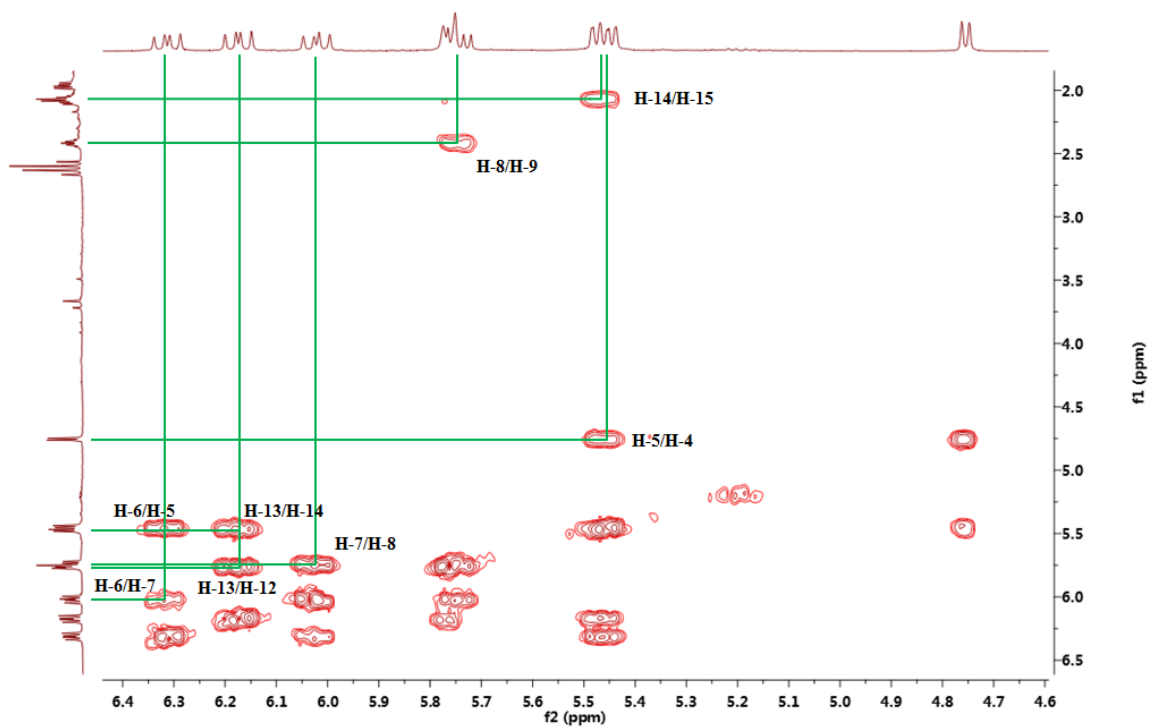


Figure S14: Enlarged ^1H - ^1H COSY spectrum of **1**

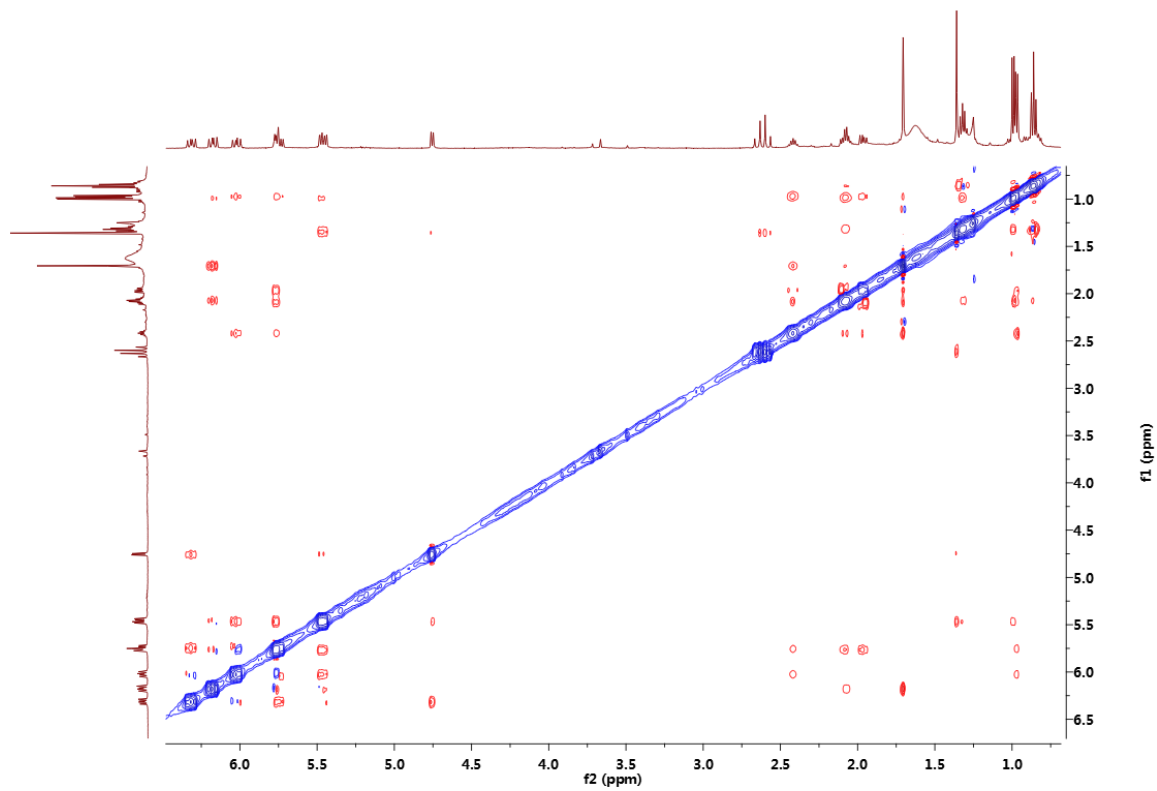


Figure S15: NOESY spectrum of **1**

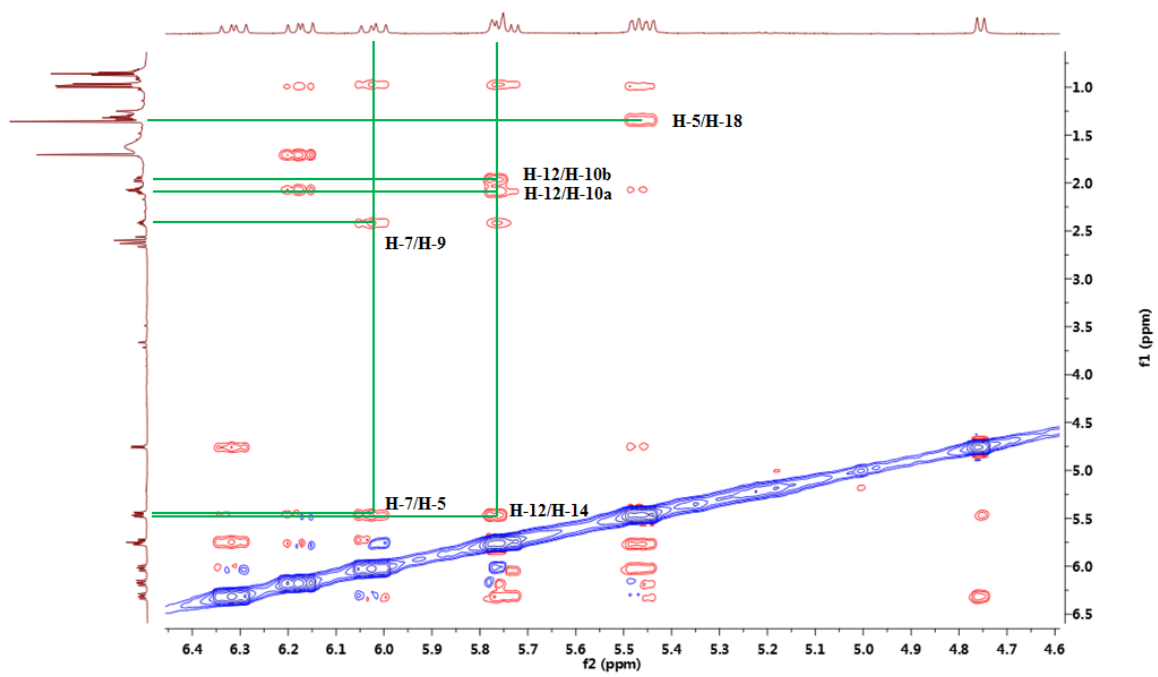


Figure S16: Enlarged NOESY spectrum of **1**

Chemical Structure similarity

SUBSTANCES

Select All Deselect All

0 of 5 Similarity Candidates Selected

Substances	Count
2-99 (most similar)	0
95-98	0
90-94	0
85-89	0
80-84	10
75-79	77
70-74	352
65-69	1202
0-64 (least similar)	5791

Get Substances

Get References Get Reactions Get Commercial Sources Tools

Sort by: Similarity Score

0 of 87 Substances Selected

Analyze Refine

Analyze by: Substance Role

Biological Study 48

Preparation 35

Occurrence 28

Reactant or Reagent 28

Analytical Study 5

Uses 5

Formation, Nonpreparative 3

Process 2

Show More

Score: 83
1. 2153477-95-1
Absolute stereochemistry, Double bond geometry as shown.

Score: 82
2. 2244327-79-6
Double bond geometry as shown, Rotation (+), Absolute stereochemistry.

Score: 80
3. 1346231-37-5
Currently available stereo shown, Double bond geometry as shown, Rotation (+), Absolute stereochemistry.

Score: 80
4. 1346231-38-6
Currently available stereo shown, Double bond geometry as shown, Rotation (-), Absolute stereochemistry.

Score: 80
5. 1380680-54-5
Currently available stereo shown, Double bond geometry as shown, Relative stereochemistry.

Score: 80
6. 1380680-55-6
Currently available stereo shown, Double bond geometry as shown, Absolute stereochemistry.

Score: 80
7. 1380680-56-7
Currently available stereo shown, Double bond geometry as shown, Absolute stereochemistry.

Score: 80
8. 1380680-57-8
Currently available stereo shown, Double bond geometry as shown, Absolute stereochemistry.

Score: 80
9. 1380680-58-9
Currently available stereo shown, Double bond geometry as shown, Absolute stereochemistry.

Chemical structures and names for each result are provided in the image.

Figure S17: SciFinder search results of 1