

Supporting Information

J. Chem. Metrol. X:X (2025) XX-XX

Microwave-assisted extraction for the Determination of Shanzhiside Methyl Ester and Barlerin in *Barleria prionitis* L.

Nilubon Sornkaew^{1*}, Thanapich Santiwat², and Nakorn Niamnont²

¹ *Herbal and Cannabis Science, Faculty of Science and Technology, Bansomdejchaopraya Rajabhat University, Bangkok 10600, Thailand 10140, Thailand*

² *Organic Synthesis, Electrochemistry & Natural Product Research Unit, Department of Chemistry, Faculty of Science, King Mongkut's University of Technology Thonburi, Bangkok 10140, Thailand*

Table of Contents	Page
Figure S1: ¹ H-NMR (400 MHz, CD ₃ OD) Spectrum of 1 (Barlerin)	2
Figure S2: ¹³ C-NMR (100 MHz, CD ₃ OD) Spectrum of 1 (Barlerin)	3
Figure S3: HR-ESI-MS Spectrum of 1 (Barlerin)	4
Figure S4: ¹ H-NMR (400 MHz, CD ₃ OD) Spectrum of 2 (Shanzhiside Methyl Ester)	5
Figure S5: ¹³ C-NMR (100 MHz, CD ₃ OD) Spectrum of 2 (Shanzhiside Methyl Ester)	6
Figure S6: HR-ESI-MS Spectrum of 2 (Shanzhiside Methyl Ester)	7
Figure S7: HPLC Chromatogram of Shanzhiside Methyl Ester Standard	7
Figure S8: HPLC Chromatogram of Barlerin Standard	7

* Corresponding author: E-Mail: Nilubon.so@bsru.ac.th; Phone:(+66)95-9366828

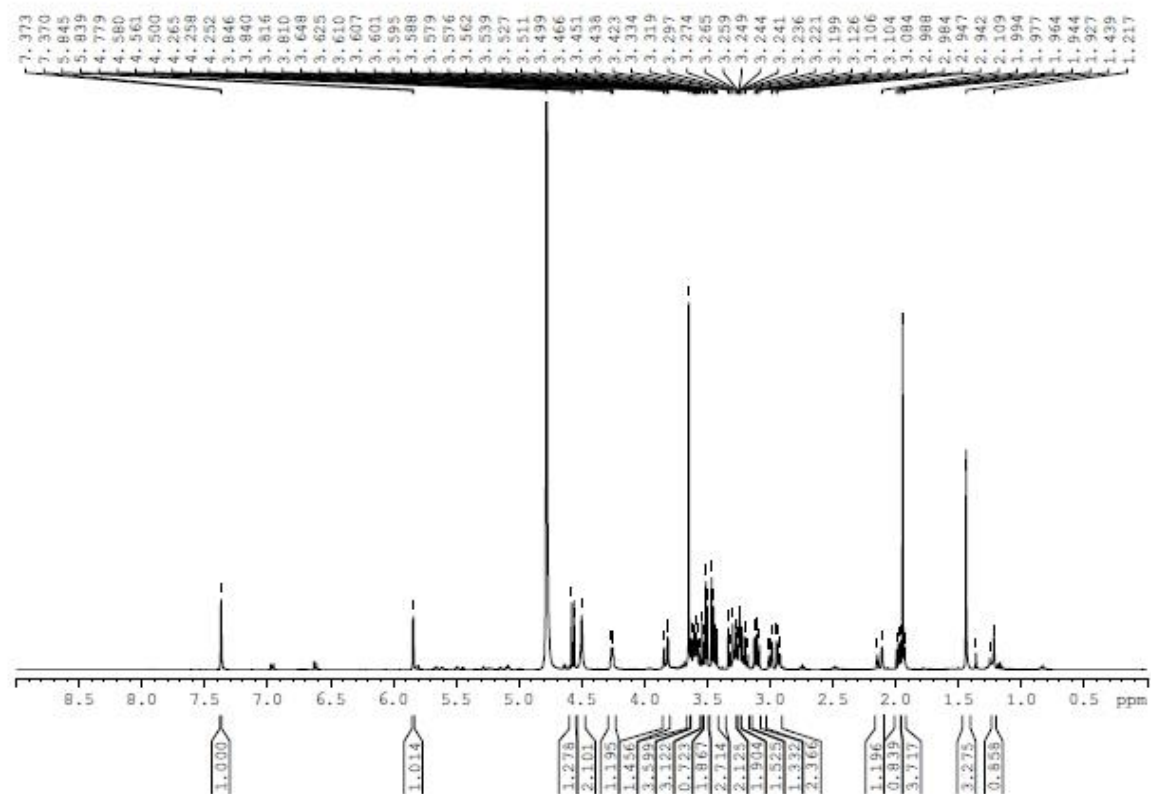


Figure S1: ¹H-NMR (400 MHz, CD₃OD) Spectrum of **1** (Barlerin)

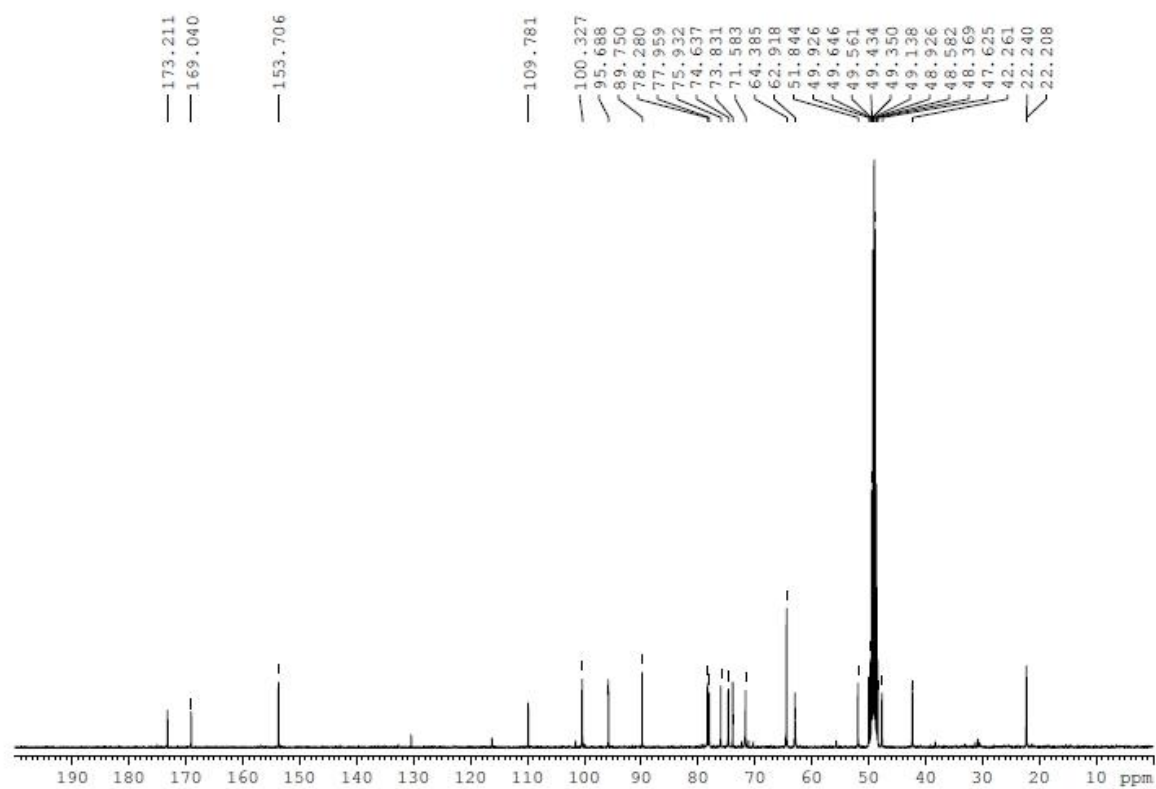


Figure S2: ^{13}C -NMR (100 MHz, CD_3OD) Spectrum of **1** (Barlerin)

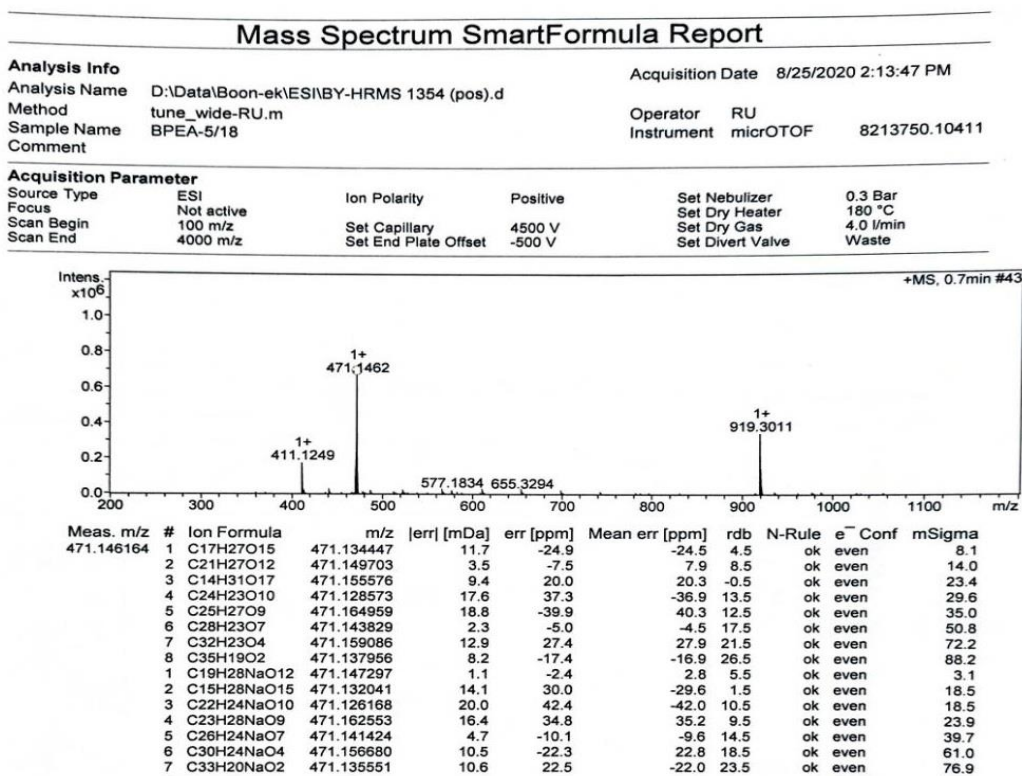


Figure S3: HR-ESI-MS Spectrum 1 (Barlerin)

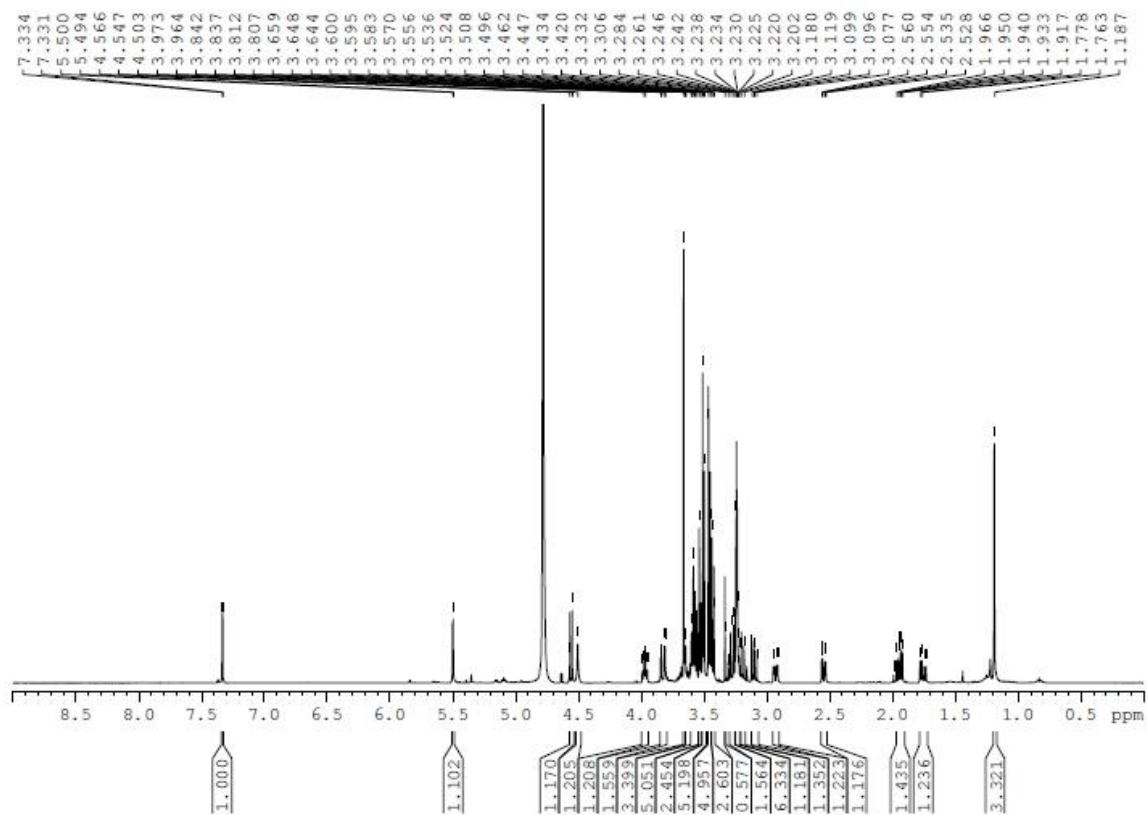


Figure S4: ^1H -NMR (400 MHz, CD_3OD) Spectrum of **2** (Shanzhiside Methyl Ester)

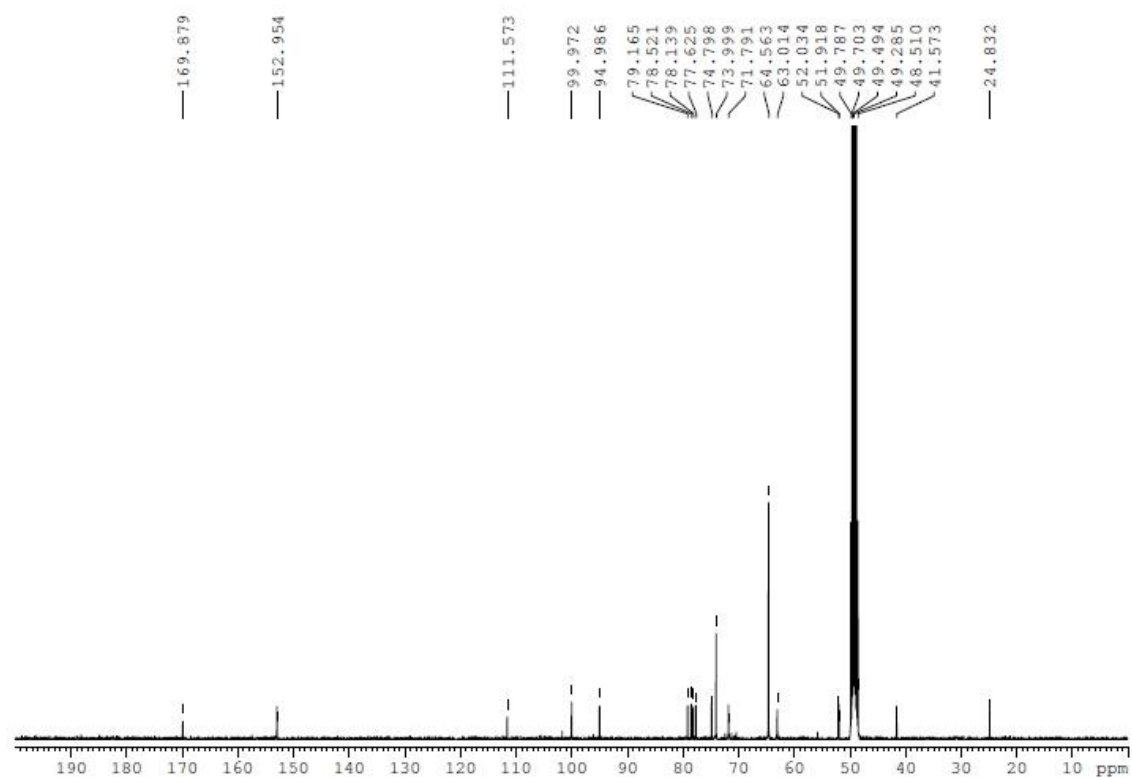


Figure S5: ^{13}C -NMR (100 MHz, CD_3OD) Spectrum of **2** (Shanzhiside Methyl Ester)

Mass Spectrum SmartFormula Report

Analysis Info

Analysis Name D:\Data\Boon-ek\ESI\BY-HRMS 1355 (pos).d
 Method tune_wide-RU.m
 Sample Name BPEA-5/31
 Comment

Acquisition Date 8/25/2020 2:16:24 PM

Operator RU
 Instrument micrOTOF 8213750.10411

Acquisition Parameter

Source Type	ESI	Ion Polarity	Positive	Set Nebulizer	0.3 Bar
Focus	Not active			Set Dry Heater	180 °C
Scan Begin	100 m/z	Set Capillary	4500 V	Set Dry Gas	4.0 l/min
Scan End	4000 m/z	Set End Plate Offset	-500 V	Set Divert Valve	Waste

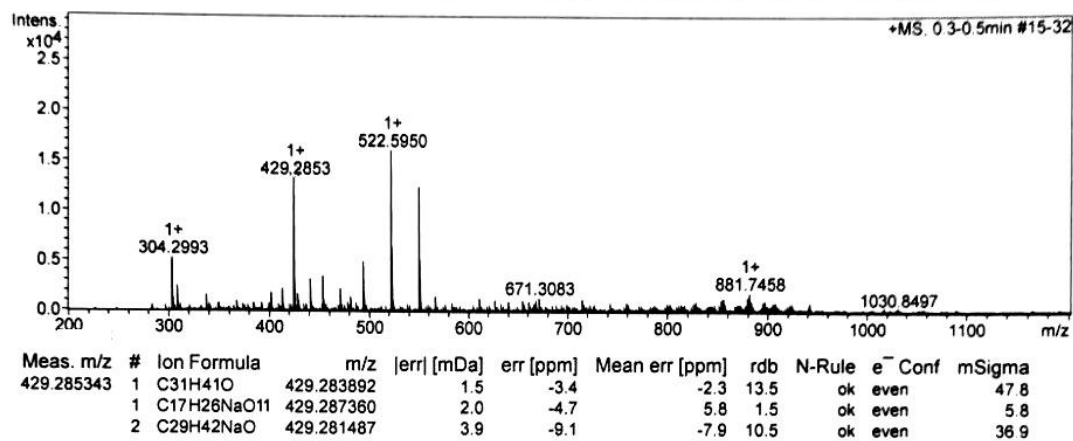


Figure S6: HR-ESI-MS Spectrum of 2 (Shanzhiside Methyl Ester)

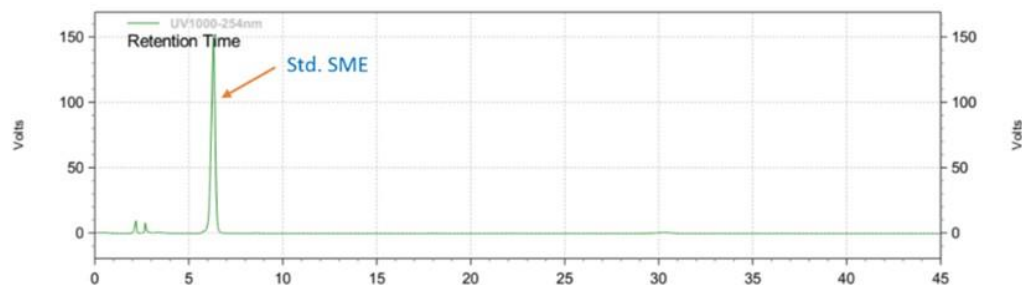


Figure S7: HPLC Chromatogram of Shanzhiside Methyl Ester Standard

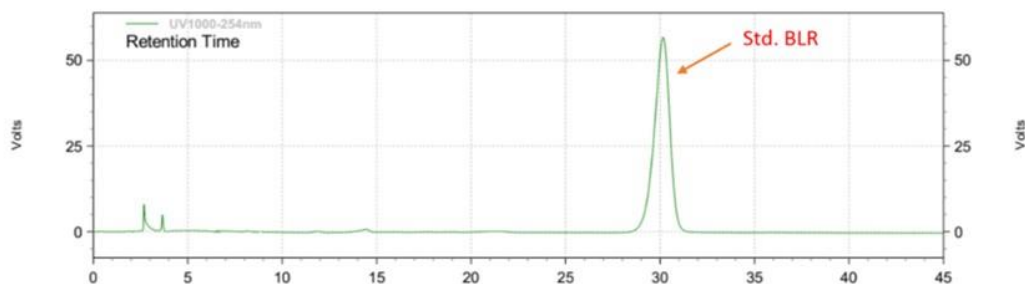


Figure S8: HPLC Chromatogram of Barlerin Standard